



GHANA STATISTICAL SERVICE (GSS)
Statistics for Development and Progress

Statistical Bulletin

(PRODUCER PRICE INDEX PPI)
November, 2015

Ghana Statistical Service (GSS)

Statistical Bulletin

PRODUCER PRICE INDEX (PPI)
NOVEMBER, 2015

Date: December 23, 2015

Producer Price Index (PPI)
September 2015

CONTENTS

HIGHLIGHTS FOR NOVEMBER 2015	2
Table 1: Producer Price Index for November 2014 - November 2015	4
Table 2: Producer Price Index (Sep.2006=100) by sectors for November 2014 - November 2015	5
Table 3: Producer Price Index: Yearly Change Rates by Sector for November 2014 - November 2015(%)	6
Table 4: Producer Price Index: Monthly Change Rates by Sector for November 2014 - November 2015 (%)	7
Table 5: Mining And Quarrying: Producer Price Index (Sept 2006=100) November 2014 - November 2015	8
Table 6: Mining and Quarrying: Yearly Change Rates for November 2014 - November 2015(%)	9
Table 7: Mining and Quarrying: Monthly Change Rates for November 2014 - November 2015 (%)	10
Table 8: Manufacturing Producer Price Index (Sept 2006=100) for November 2014 - November 2015	11
Table 9: Manufacturing: Yearly Change Rates for November 2014 - November 2015 (%)	17
Table 10: Manufacturing: Monthly Change Rates for November 2014 - November 2015 (%)	23
Table 11: Utilities: Producer Price Index (Sept 2006=100) for November 2014 - November 2015	28
Table 12: Utilities: Yearly Change Rates for November 2014 - November 2015 (%)	29
Table 13: Utilities: Monthly Change Rates for November 2014 - November 2015 (%)	30

HIGHLIGHTS FOR NOVEMBER 2015

Producer Price Inflation Rate in November 2015 is 3.0%

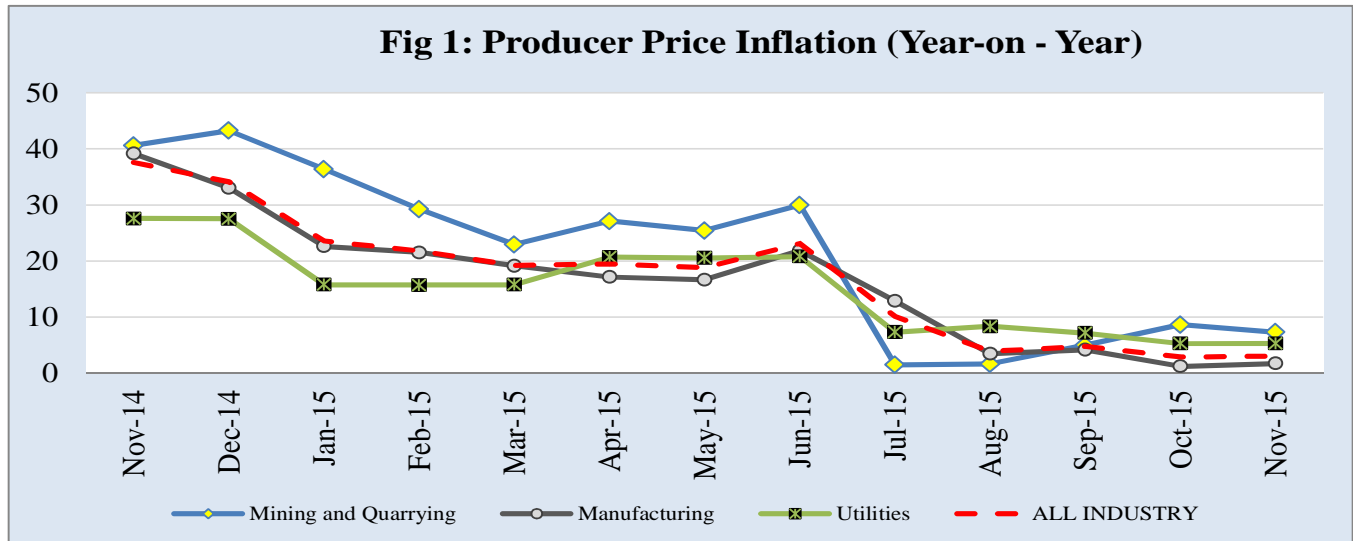
The Producer Price Index (PPI) measures the average change over time in the prices received by domestic producers for the production of their goods and services. The PPI for Ghana reports the producer price indices with reference to September 2006, the base period.

The Producer Price Index (PPI) measures the average change over time in the prices received by domestic producers for the production of their goods and services. The PPI for Ghana reports the producer price indices with reference to September 2006, the base period. This release shows the producer price changes since October 2006, as well as the annual (year-on-year) and monthly inflation rates, for all industry and three major sub-sectors of industry (Mining and Quarrying, Manufacturing, and Utilities) for the last twelve months. The figures for the month of November 2015 are provisional, and are subject to revision when additional data become available. All other indicators are final.

The Producer Price Inflation rate for November 2015 was 3.0 percent. This rate indicates that, between November 2014 and November 2015 (year-on-year), the PPI increased by 3.0 percent, representing a 0.1 percentage point increase in producer inflation relative to the rate recorded in October 2015 (2.9 %). The month-on-month change in producer price index between October and November 2015 was -0.7 percent

The producer price inflation in the Mining and Quarrying sub-sector decreased by 1.4 percentage point over the October 2015 rate of 8.7 percent, to record 7.3 percent in November 2015. Manufacturing, which constitutes more than two-thirds of total industry increased by 0.5 percentage point to record 1.7 percent. The Utilities sub-sector recorded an inflation rate of 5.3 percent in November 2015 indicating no change in the inflation rate.

During the month of November 2015, twelve out of the sixteen major groups in the manufacturing sub-sector recorded inflation rates higher than the sector average of 1.7 percent . Manufacture of paper and paper products recorded the highest inflation rate of 67.2 percent while the manufacture of coke, refined petroleum and nuclear fuel recorded the lowest producer price inflation rate.



Manufacture of coke, refined petroleum products etc: Annual rate was -34.5 percent for October 2015, as compare to -33.6 percent in November 2015.

Manufacture of other non-metallic mineral product: Annual rate (4.8%) was the same for October and November 2015.

Manufacture of motor vehicles, trailers and semi-trailers: Annual rate was -0.5 percent in November 2015 as compared to -0.2 percent last month.

Electricity and Water Supply: Annual rate (5.3%) was the same for October and November 2015.

More detailed time series data is posted on the GSS website [www.statsghana.gov.gh].

The next release date is 27th January, 2016

Table 1: Producer Price Index for November 2014 - November 2015

Year / Month	Index level	Monthly	Yearly
	Sept 2006=100	Change Rate (%)	
November-14	461.1	-0.9	37.6
December-14	456.6	-1.0	34.2
January-15	450.6	-1.3	23.6
February-15	456.8	1.4	21.8
March-15	461.1	0.9	19.2
April-15	473.8	2.8	19.5
May-15	477.2	0.7	18.8
June-15	498.0	4.4	23.1
July-15	490.4	-1.5	10.2
August-15	471.6	-3.8	3.9
September-15	481.2	2.1	4.8
October-15	478.7	-0.5	2.9
November-15	p 475.1	p -0.7	p 3.0

p: provisional

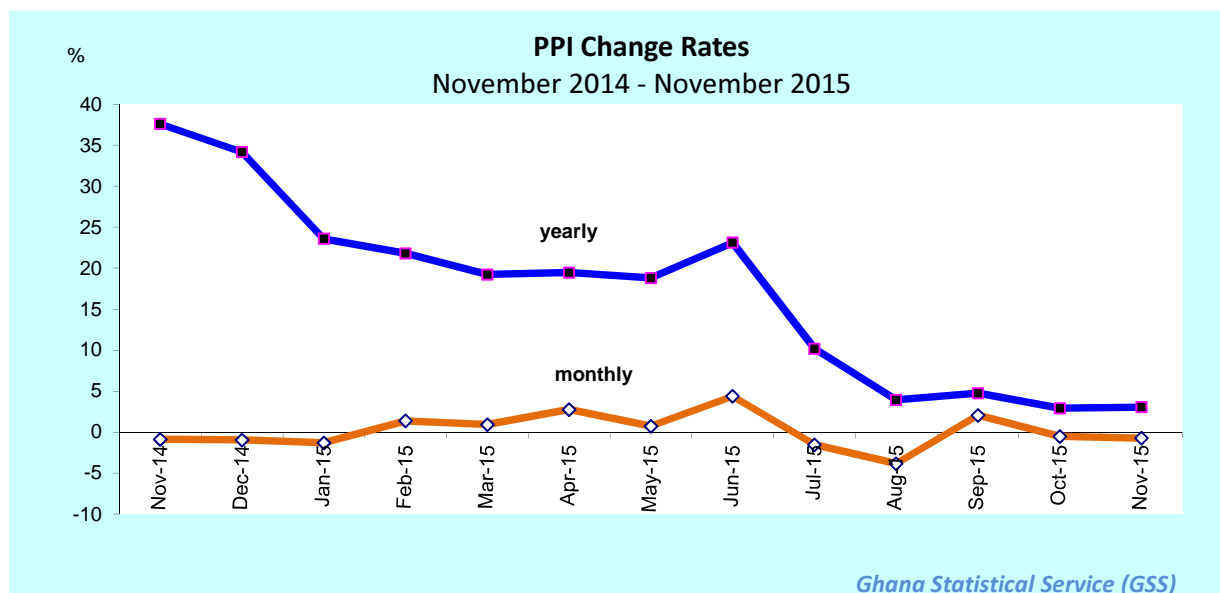


Table 2: Producer Price Index (Sep.2006=100) by sectors for November 2014 - November 2015

Year / Month	Mining and Quarrying	Manufacturing	Utilities	ALL INDUSTRY
<i>ISIC</i>	<i>C</i>	<i>D</i>	<i>E</i>	<i>C+D+E</i>
<i>weight</i>	13.97	69.75	16.28	100.00
November-2014	755.0	395.6	544.6	461.1
December-2014	762.1	387.7	545.0	456.6
January-2015	793.8	378.4	545.2	450.6
February-2015	811.3	384.0	546.3	456.8
March-2015	837.4	386.2	548.1	461.1
April-2015	899.9	390.3	573.1	473.8
May-2015	917.9	392.8	573.7	477.2
June-2015	958.2	413.8	575.7	498.0
July-2015	783.1	424.3	576.1	490.4
August-2015	794.3	399.2	578.7	471.6
September-2015	837.6	407.3	573.4	481.2
October-2015	857.3	401.7	573.4	478.7
November-2015	p 810.3	p 402.5	p 573.5	p 475.1

p: provisional

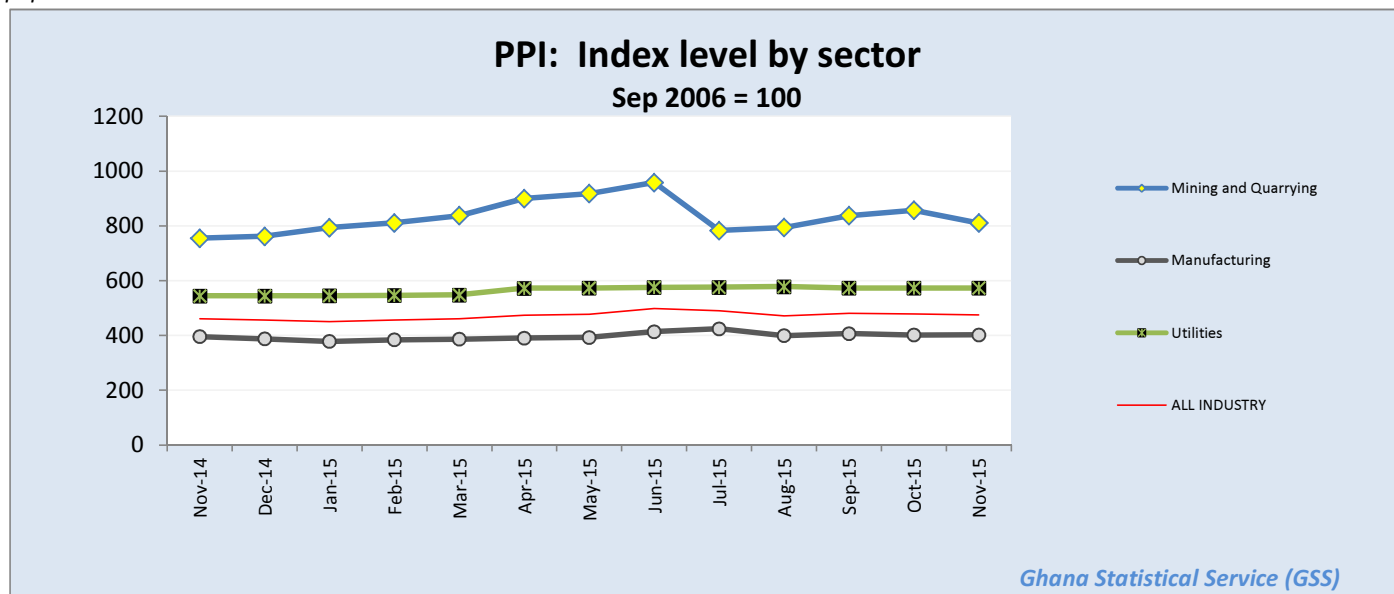


Table 3: Producer Price Index: Yearly Change Rates by Sector for November 2014 - November 2015(%)

Year / Month	Mining and Quarrying	Manufacturing	Utilities	ALL INDUSTRY
<i>ISIC</i>	<i>C</i>	<i>D</i>	<i>E</i>	<i>C+D+E</i>
<i>weight</i>	13.97	69.75	16.28	100.00
November-2014	40.6	39.2	27.6	37.6
December-2014	43.3	33.1	27.5	34.2
January-2015	36.4	22.6	15.8	23.6
February-2015	29.3	21.5	15.7	21.8
March-2015	23.0	19.2	15.8	19.2
April-2015	27.1	17.2	20.7	19.5
May-2015	25.4	16.7	20.6	18.8
June-2015	30.0	21.9	20.8	23.1
July-2015	1.5	12.9	7.3	10.2
August-2015	1.7	3.5	8.4	3.9
September-2015	5.0	4.2	7.2	4.8
October-2015	8.7	1.2	5.3	2.9
November-2015	p 7.3	p 1.7	p 5.3	p 3.0

p: provisional

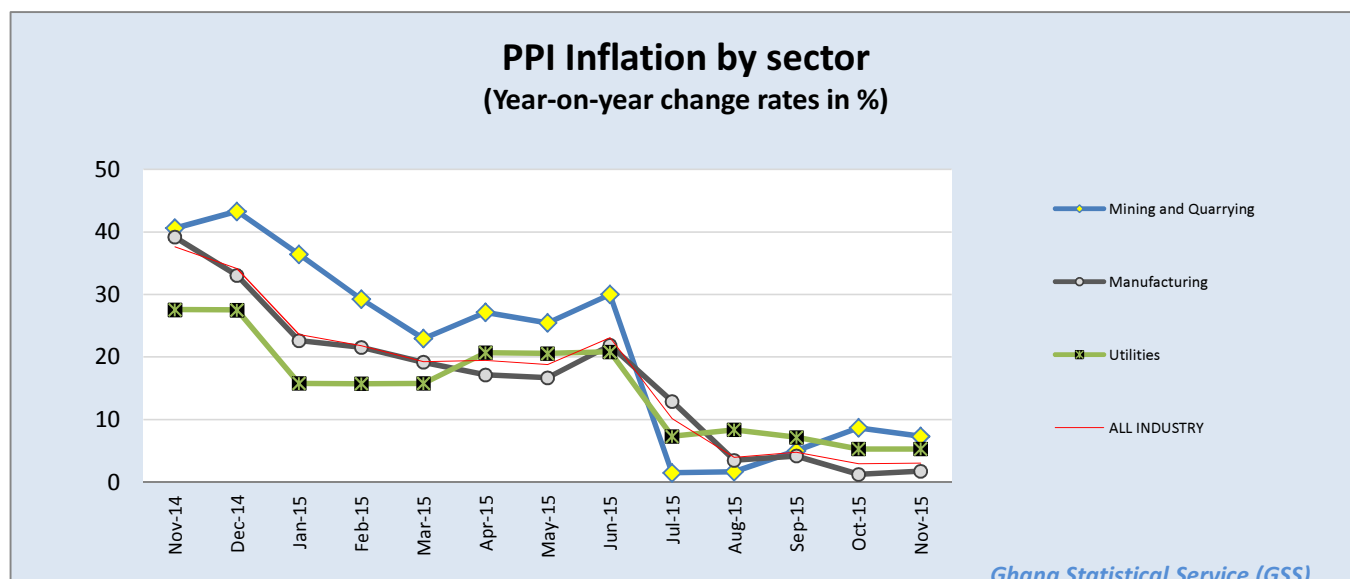


Table 4: Producer Price Index: Monthly Change Rates by Sector for November 2014 - November 2015 (%)

Year / Month	Mining and Quarrying	Manufacturing	Utilities	ALL INDUSTRY
<i>ISIC</i>	<i>C</i>	<i>D</i>	<i>E</i>	<i>C+D+E</i>
<i>weight</i>	13.97	69.75	16.28	100.00
November-2014	-4.3	-0.3	0.0	-0.9
December-2014	0.9	-2.0	0.1	-1.0
January-2015	4.2	-2.4	0.0	-1.3
February-2015	2.2	1.5	0.2	1.4
March-2015	3.2	0.6	0.3	0.9
April-2015	7.5	1.1	4.5	2.8
May-2015	2.0	0.6	0.1	0.7
June-2015	4.4	5.3	0.4	4.4
July-2015	-18.3	2.5	0.1	-1.5
August-2015	1.4	-5.9	0.4	-3.8
September-2015	5.4	2.0	-0.9	2.1
October-2015	2.4	-1.4	0.0	-0.5
November-2015	p -5.5	p 0.2	p 0.0	p -0.7

p: provisional

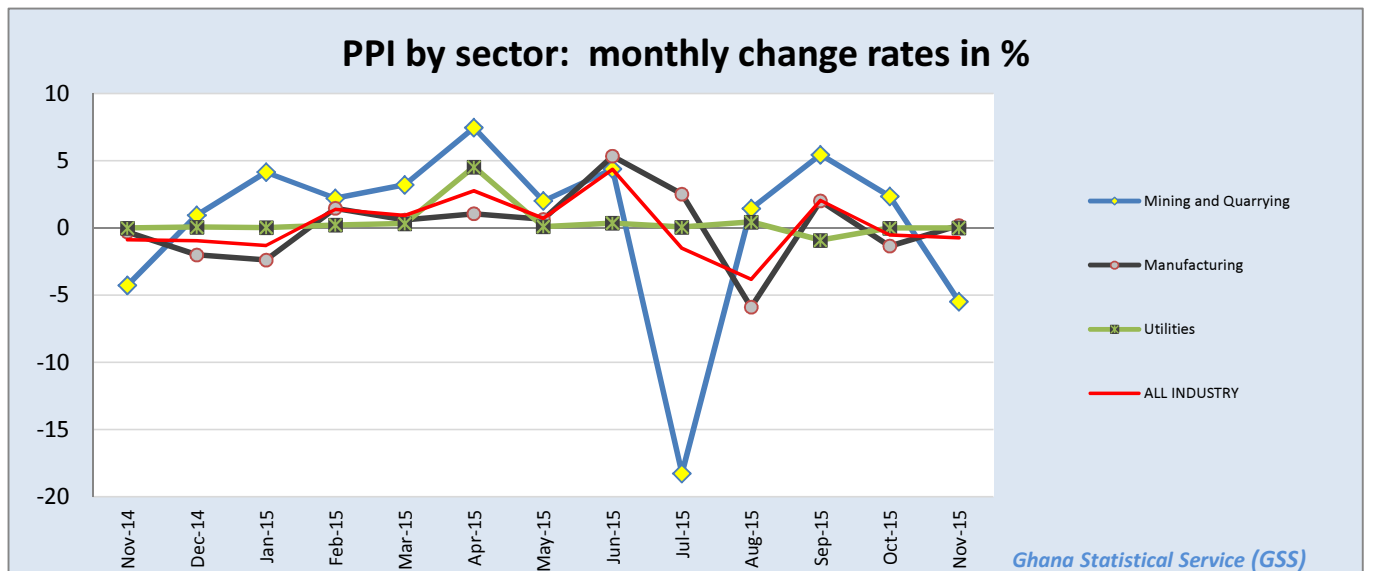


Table 5: Mining And Quarrying: Producer Price Index (Sept 2006=100) November 2014 - November 2015

Year / Month	Mining and Quarrying	Mining of metal ores	Mining of non-ferrous metal ores	Other mining and quarrying	Quarrying of stone, sand & clay	Mining and quarrying n.e.c.
<i>ISIC</i>	<i>C</i>	<i>C13</i>	<i>C132</i>	<i>C14</i>	<i>C141</i>	<i>C142</i>
<i>weight</i>	100.00	95.01	95.01	4.99	3.42	0.87
November-2014	755.0	806.2	806.2	147.5	140.6	178.3
December-2014	762.1	814.1	814.1	147.5	140.6	178.3
January-2015	793.8	847.8	847.8	154.0	148.3	178.3
February-2015	811.3	867.3	867.3	154.0	148.3	178.3
March-2015	837.4	896.3	896.3	154.0	148.3	178.3
April-2015	899.9	966.0	966.0	154.0	148.3	178.3
May-2015	917.9	986.2	986.2	154.0	148.3	178.3
June-2015	958.2	1031.2	1031.2	154.0	148.3	178.3
July-2015	783.1	832.7	832.7	169.6	149.8	276.2
August-2015	794.3	842.4	842.4	184.0	149.8	412.5
September-2015	837.6	890.0	890.0	184.5	150.3	412.5
October-2015	857.3	911.8	911.8	184.5	150.3	412.5
November-2015	p 810.3	p 859.9	p 859.9	p 184.5	p 150.3	p 412.5

p: provisional

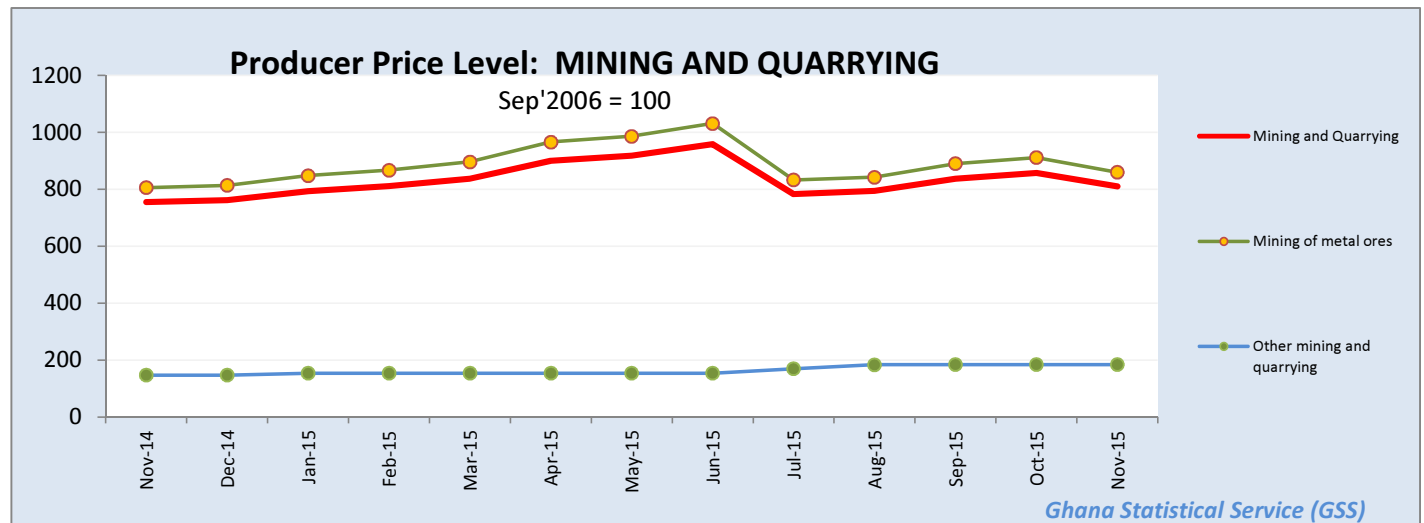


Table 6: Mining and Quarrying: Yearly Change Rates for November 2014 - November 2015(%)

Year / Month	Mining and Quarrying	Mining of metal ores	Mining of non-ferrous metal ores	Other mining and quarrying	Quarrying of stone, sand & clay	Mining and quarrying n.e.c.
ISIC	C	C13	C132	C14	C141	C142
weight	100.00	95.01	95.01	4.99	3.42	0.87
November-2014	40.6	42.5	42.5	0.6	-1.7	10.2
December-2014	43.3	45.3	45.3	0.6	-1.7	10.2
January-2015	36.4	37.8	37.8	6.5	5.5	10.2
February-2015	29.3	30.3	30.3	6.5	5.5	10.2
March-2015	23.0	23.7	23.7	6.5	5.5	10.2
April-2015	27.1	28.0	28.0	6.5	5.5	10.2
May-2015	25.4	26.3	26.3	6.5	5.5	10.2
June-2015	30.0	31.1	31.1	6.5	5.5	10.2
July-2015	1.5	0.9	0.9	17.3	6.6	70.7
August-2015	1.7	0.8	0.8	24.7	6.6	131.3
September-2015	5.0	4.3	4.3	25.1	6.9	131.3
October-2015	8.7	8.1	8.1	25.1	6.9	131.3
November-2015	p 7.3	p 6.7	p 6.7	p 25.1	p 6.9	p 131.3

p: provisional

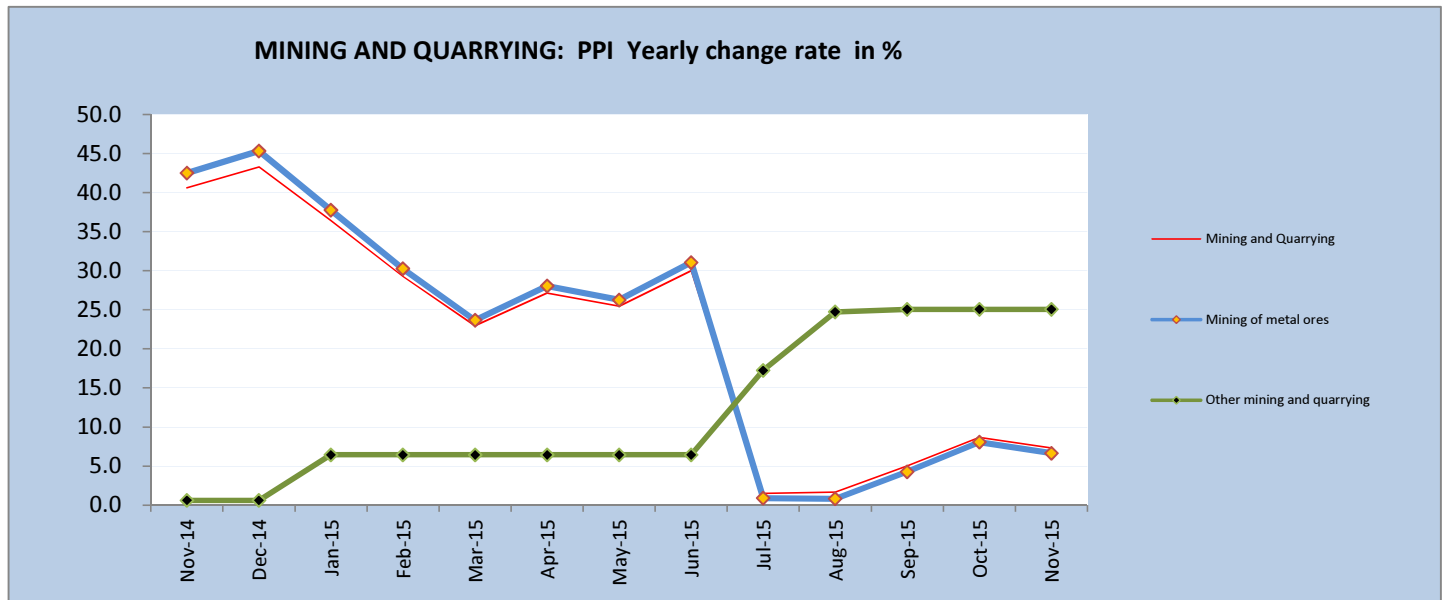


Table 7: Mining and Quarrying: Monthly Change Rates for November 2014 - November 2015 (%)

Year / Month	Mining and Quarrying	Mining of metal ores	Mining of non-ferrous metal ores	Other mining and quarrying	Quarrying of stone, sand & clay	Mining and quarrying n.e.c.
ISIC	C	C13	C132	C14	C141	C142
weight	100.00	95.01	95.01	4.99	3.42	0.87
November-2014	-4.3	-4.5	-4.5	0.0	0.0	0.0
December-2014	0.9	1.0	1.0	0.0	0.0	0.0
January-2015	4.2	4.1	4.1	4.4	5.5	0.0
February-2015	2.2	2.3	2.3	0.0	0.0	0.0
March-2015	3.2	3.3	3.3	0.0	0.0	0.0
April-2015	7.5	7.8	7.8	0.0	0.0	0.0
May-2015	2.0	2.1	2.1	0.0	0.0	0.0
June-2015	4.4	4.6	4.6	0.0	0.0	0.0
July-2015	-18.3	-19.3	-19.3	10.2	1.0	54.9
August-2015	1.4	1.2	1.2	8.5	0.0	49.4
September-2015	5.4	5.7	5.7	0.3	0.3	0.0
October-2015	2.4	2.4	2.4	0.0	0.0	0.0
November-2015	p -5.5	p -5.7	p -5.7	p 0.0	p 0.0	p 0.0

p: provisional

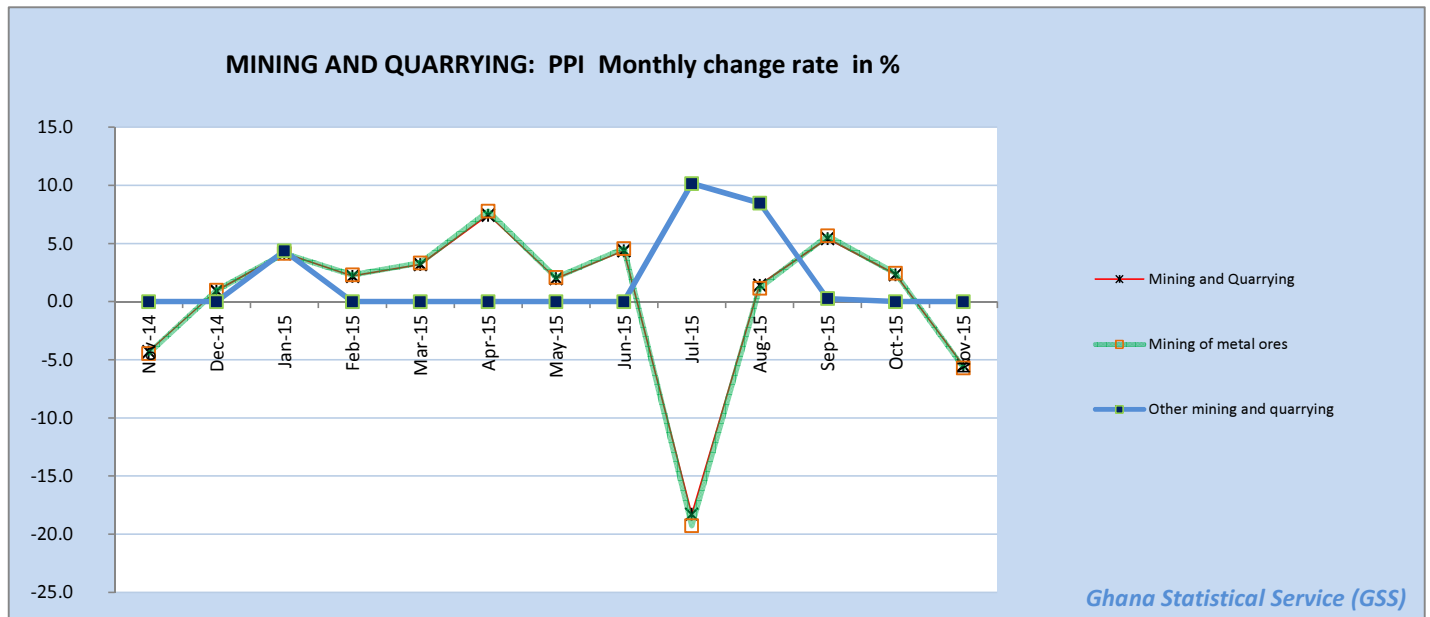


Table 8: Manufacturing Producer Price Index (Sept 2006=100) for November 2014 - November 2015

Year / Month	Manufacturing	Manufacture of food products and beverages	Production, processing, preservation of meat, fish, fruit, vegetables, oils and fats	Manufacture of dairy products	Manufacture of grain mill products, starch products, and prepared animal feeds	Manufacture of other food products	Manufacture of beverages	Manufacture of textiles	Spinning, weaving and finishing of textiles
ISIC	D	D15	D151	D152	D153	D154	D155	D17	D171
weight	100	25.64	4.60	4.31	4.66	4.80	7.27	4.27	4.28
November-2014	395.6	400.1	538.7	354.0	536.3	249.8	397.4	359.9	359.9
December-2014	387.7	406.1	561.6	354.0	530.8	249.8	403.1	434.4	434.4
January-2015	378.4	405.9	562.8	354.0	530.8	247.8	403.1	434.4	434.4
February-2015	384.0	422.8	563.8	354.0	520.7	368.2	403.1	434.4	434.4
March-2015	386.2	432.1	618.7	354.0	525.2	370.0	411.6	434.4	434.4
April-2015	390.3	435.1	648.9	354.0	516.9	378.0	411.6	445.6	445.6
May-2015	392.8	441.5	653.8	354.0	516.9	427.2	411.6	445.6	445.6
June-2015	413.8	448.0	699.7	352.0	516.9	441.2	415.3	466.8	466.8
July-2015	424.3	432.3	598.1	352.0	548.6	439.0	383.2	482.0	482.0
August-2015	399.2	439.6	632.5	352.0	565.1	451.1	383.2	482.0	482.0
September-2015	407.3	435.6	590.9	352.0	565.1	456.4	383.2	485.4	485.4
October-2015	401.7	436.8	602.0	352.0	565.1	456.4	383.2	482.0	482.0
November-2015	p 402.5	p 438.5	p 603.4	p 352.0	p 565.1	p 465.8	p 384.9	p 484.2	p 484.2

p: provisional

Table 8: Manufacturing Producer Price Index (Sept 2006=100) for November 2014 - November 2015

contd.

Year / Month	Tanning of leather; manu facture of luggage, etc	Manufacture of footwear	Manufacture of wood an of articles of straw etc.	Sawmilling and planing of wood	Manufacture of products of wood, cork, straw etc.	Manufacture of paper and paper products	Manufacture of paper and paper products	Publishing, printing and reproduction of rec. media	Publishing	Printing and service activities ...
ISIC	D19	D192	D20	D201	D202	D21	D210	D22	D221	D222
weight	0.12	0.12	9.03	4.94	4.10	0.62	0.62	1.14	0.40	0.74
November-2014	377.4	377.4	226.2	221.9	237.6	297.4	297.4	587.3	665.2	548.7
December-2014	368.0	368.0	226.2	221.9	237.6	304.7	304.7	585.4	665.2	544.5
January-2015	276.3	276.3	226.7	221.9	239.9	376.4	376.4	595.5	665.2	560.6
February-2015	279.8	279.8	226.5	221.9	239.0	376.4	376.4	597.5	665.2	563.6
March-2015	325.5	325.5	227.4	221.9	242.0	381.9	381.9	597.5	665.2	563.6
April-2015	325.5	325.5	228.2	222.5	242.0	395.4	395.4	760.3	665.2	879.1
May-2015	325.5	325.5	228.2	222.5	242.1	396.1	396.1	760.3	665.2	879.1
June-2015	378.8	378.8	228.8	222.5	244.1	421.2	421.2	760.3	665.2	879.1
July-2015	378.8	378.8	227.6	222.0	242.6	419.1	419.1	715.8	665.2	745.0
August-2015	378.8	378.8	215.4	205.9	244.9	424.7	424.7	723.4	665.2	757.4
September-2015	379.9	379.9	215.8	205.9	246.7	497.5	497.5	712.2	665.2	739.3
October-2015	379.9	379.9	229.0	221.8	250.7	497.1	497.1	712.6	665.2	739.9
November-2015	p 379.9	p 379.9	p 229.0	p 221.8	p 250.7	p 497.1	p 497.1	p 712.6	p 665.2	p 739.9

p: provisional

Table 8: Manufacturing Producer Price Index (Sept 2006=100) for November 2014 - November 2015
contd.

Year / Month	Manufacture of coke, refined petroleum products etc.	Manufacture of refined petroleum products	Manufacture of chemicals and chemical products	Manufacture of basic chemicals	Manufacture of other chemical products	Manufacture of man-made fibres	Manufacture of rubber and plastics products	Manufacture of rubber products	Manufacture of plastics products
<i>ISIC</i>	D23	D232	D24	D241	D242	D243	D25	D251	D252
<i>weight</i>	22.94	22.94	10.15	0.54	9.45	0.16	3.90	0.76	3.14
November-2014	497.1	497.1	275.0	413.8	277.7	109.6	302.4	236.1	319.9
December-2014	421.2	421.2	295.4	427.3	298.7	109.6	319.2	243.4	339.4
January-2015	366.7	366.7	293.8	427.3	297.1	109.6	343.5	245.3	369.0
February-2015	368.1	368.1	293.1	357.8	297.1	109.6	355.1	239.6	386.1
March-2015	359.6	359.6	293.1	357.8	297.1	109.6	371.0	242.5	406.1
April-2015	361.1	361.1	309.9	357.8	314.9	109.6	372.4	245.0	407.1
May-2015	362.8	362.8	309.5	357.8	314.3	109.6	382.6	273.1	411.0
June-2015	402.2	402.2	324.1	357.8	329.5	109.6	418.9	295.0	451.3
July-2015	468.1	468.1	327.0	357.8	332.6	109.6	401.6	294.7	429.0
August-2015	360.3	360.3	328.3	357.8	334.0	109.6	403.9	299.2	430.6
September-2015	364.6	364.6	402.3	357.8	411.8	109.6	400.0	298.1	425.9
October-2015	330.5	330.5	402.3	357.8	411.8	109.6	410.8	326.8	425.8
November-2015	p 330.3	p 330.3	p 406.6	p 357.8	p 416.3	p 109.6	p 411.0	p 327.3	p 425.9

p: provisional

Table 8: Manufacturing Producer Price Index (Sept 2006=100) for November 2014 - November 2015
contd.

Year / Month	Manufacture of other non-metallic min. products	Manufacture of non-metallic mineral products n.e.c.	Manufacture of basic metals	Manufacture of basic iron and steel	Manufacture of basic precious and non-ferrous metals	Manufacture of fabricated metal products, ...	Manufacture of structural metal products, tanks, reservoirs ...	Manufacture of other fabricated metal products ...	Manufacture of machinery ... n.e.c.	Manufacture of special-purpose machinery
ISIC	D26	D269	D27	D271	D272	D28	D281	D289	D29	D292
weight	8.20	8.20	5.02	2.02	2.65	3.70	1.55	2.15	0.42	0.42
November-2014	457.6	457.6	358.6	462.8	295.2	505.2	460.9	539.8	676.2	676.2
December-2014	462.5	462.5	371.3	462.9	313.9	507.3	465.0	539.8	676.2	676.2
January-2015	457.5	457.5	371.3	462.9	313.9	513.3	475.2	542.8	676.2	676.2
February-2015	457.7	457.7	373.5	464.2	316.6	513.3	475.1	543.0	676.2	676.2
March-2015	458.8	458.8	379.2	465.9	324.2	512.8	475.0	542.1	714.3	714.3
April-2015	446.1	446.1	367.3	421.1	331.0	555.8	536.6	569.0	714.3	714.3
May-2015	446.1	446.1	369.1	421.6	333.5	568.2	555.1	577.1	714.3	714.3
June-2015	475.0	475.0	382.2	420.6	355.3	601.3	577.2	617.9	714.3	714.3
July-2015	482.4	482.4	373.1	406.3	349.7	568.9	508.3	617.0	714.3	714.3
August-2015	482.5	482.5	380.8	408.2	361.1	569.7	508.3	618.5	714.3	714.3
September-2015	479.2	479.2	373.1	407.8	348.6	572.4	511.3	620.9	714.3	714.3
October-2015	479.6	479.6	372.7	407.8	348.0	644.3	584.4	687.1	714.3	714.3
November-2015	p 479.6	p 479.6	p 370.4	p 407.8	p 344.2	p 644.3	p 584.4	p 687.1	p 714.3	p 714.3

p: provisional

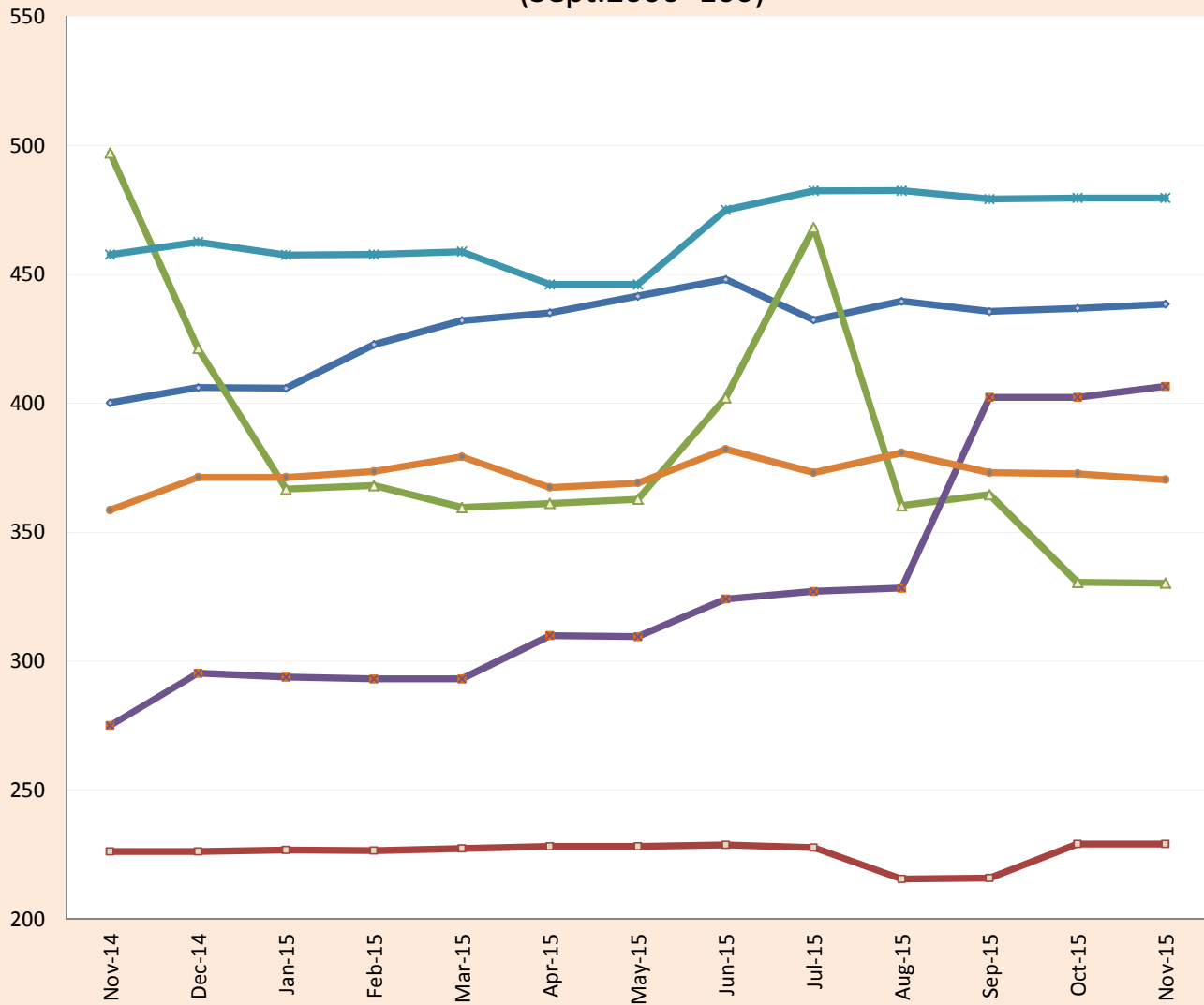
Table 8: Manufacturing Producer Price Index (Sept 2006=100) for November 2014 - November 2015

contd.

Year / Month	Manufacture of electrical machinery and apparatus n.e.c.	Manufacture of insulated wire and cable	Manufacture of motor vehicles, trailers and semi-trailers	Manufacture of bodies for motor vehicles, trailers and semi-trailers	Manufacture of furniture; manufacturing n.e.c.	Manufacture of furniture	Manufacturing n.e.c.
<i>ISIC</i>	D31	<i>D313</i>	D34	<i>D342</i>	D36	<i>D361</i>	<i>D369</i>
<i>weight</i>	0.41	<i>0.41</i>	0.05	<i>0.05</i>	2.44	<i>2.33</i>	<i>0.11</i>
November-2014	239.7	239.7	395.6	395.6	456.1	455.2	485.4
December-2014	239.7	239.7	387.7	387.7	457.0	456.1	485.4
January-2015	275.1	275.1	362.9	362.9	458.9	458.1	485.4
February-2015	275.3	275.3	369.0	369.0	475.0	474.7	485.4
March-2015	279.3	279.3	376.3	376.3	504.6	505.2	485.4
April-2015	279.4	279.4	397.3	397.3	504.6	505.2	485.4
May-2015	279.5	279.5	420.6	420.6	508.4	509.1	485.4
June-2015	282.0	282.0	454.8	454.8	534.9	536.5	485.4
July-2015	298.8	298.8	355.5	355.5	531.8	533.2	485.4
August-2015	298.9	298.9	373.0	373.0	535.0	536.5	485.4
September-2015	298.9	298.9	365.5	365.5	549.9	551.7	491.0
October-2015	298.9	298.9	391.3	391.3	553.7	552.7	588.7
November-2015	p 298.9	p 298.9	p 393.8	p 393.8	p 555.3	p 554.4	p 588.7

p: provisional

PPI for Selected Subgroups in the Manufacturing Sector (Sept.2006=100)



- ◆ Manufacture of food products and beverages
- ▲ Manufacture of coke, refined petroleum products etc.
- ✕ Manufacture of other non-metallic min. products
- Manufacture of chemicals and chemical products
- Manufacture of wood and articles of straw etc.
- Manufacture of basic metals

Ghana Statistical Service (GSS)

Table 9: Manufacturing: Yearly Change Rates for November 2014 - November 2015 (%)

Year / Month	Manufacturing	Manufacture of food products and beverages	Production, processing, preservation of meat, fish, fruit, vegetables, oils and fats	Manufacture of dairy products	Manufacture of grain mill products, starch products, and prepared animal feeds	Manufacture of other food products	Manufacture of beverages	Manufacture of textiles	Spinning, weaving and finishing of textiles
<i>ISIC</i>	D	D15	<i>D151</i>	<i>D152</i>	<i>D153</i>	<i>D154</i>	<i>D155</i>	D17	<i>D171</i>
<i>weight</i>	100	25.64	4.60	4.31	4.66	4.80	7.27	4.27	4.28
November-2014	39.2	29.7	45.9	43.0	47.3	-15.0	22.5	14.6	14.6
December-2014	33.1	25.2	46.3	23.6	45.8	-16.3	24.2	38.6	38.6
January-2015	22.6	21.2	35.8	18.6	42.5	-16.9	22.4	34.8	34.8
February-2015	21.5	24.0	28.6	18.6	36.8	17.2	22.4	34.8	34.8
March-2015	19.2	23.9	32.2	17.0	34.3	14.2	24.9	34.8	34.8
April-2015	17.2	23.4	31.7	17.0	32.2	13.3	24.9	38.2	38.2
May-2015	16.7	24.3	26.4	17.0	32.2	27.7	24.9	38.2	38.2
June-2015	21.9	25.3	32.7	16.3	32.2	28.0	26.0	44.3	44.3
July-2015	12.9	13.4	10.5	16.3	5.7	22.1	13.5	49.0	49.0
August-2015	3.5	15.1	13.7	16.3	8.9	74.9	0.1	33.9	33.9
September-2015	4.2	11.6	6.5	16.3	0.3	75.6	-2.6	34.9	34.9
October-2015	1.2	8.6	12.7	-0.6	0.3	81.9	-2.6	33.9	33.9
November-2015	p 1.7	p 9.6	p 12.0	-p 0.6	p 5.4	p 86.5	-p 3.1	p 34.5	p 34.5

p: provisional

Table 9: Manufacturing Producer Price Index Yearly Change Rates for November 2014 - November 2015 (%)

contd.

Year / Month	Tanning of leather; manufacture of luggage, etc	Manufacture of footwear	Manufacture of wood and of articles of straw etc.	Sawmilling and planing of wood	Manufacture of products of wood, cork, straw etc.	Manufacture of paper and paper products	Manufacture of paper and paper products	Publishing, printing and reproduction of rec. media	Publishing	Printing and service activities ...
<i>ISIC</i>	D19	<i>D192</i>	D20	<i>D201</i>	<i>D202</i>	D21	<i>D210</i>	D22	<i>D221</i>	<i>D222</i>
<i>weight</i>	0.12	<i>0.12</i>	9.03	<i>4.94</i>	<i>4.10</i>	0.62	<i>0.62</i>	1.14	<i>0.40</i>	<i>0.74</i>
November-2014	28.5	28.5	8.1	8.2	7.5	26.6	26.6	22.9	33.0	17.6
December-2014	21.7	21.7	7.2	8.2	3.9	29.7	29.7	22.5	33.0	16.7
January-2015	-14.5	-14.5	7.4	8.2	4.7	47.7	47.7	24.1	33.0	19.5
February-2015	-13.4	-13.4	7.2	8.2	4.0	47.9	47.9	22.1	33.0	16.6
March-2015	0.8	0.8	3.5	2.6	5.1	50.1	50.1	22.1	33.0	16.6
April-2015	3.9	3.9	8.2	8.5	6.1	55.4	55.4	55.2	33.0	81.5
May-2015	3.9	3.9	7.6	8.1	4.9	55.6	55.6	50.4	33.0	72.8
June-2015	2.0	2.0	7.4	8.1	4.1	52.3	52.3	48.4	33.0	69.3
July-2015	0.5	0.5	6.9	7.8	3.5	46.7	46.7	35.5	33.0	36.9
August-2015	0.5	0.5	1.1	0.0	4.4	48.7	48.7	37.0	33.0	39.2
September-2015	0.3	0.3	1.1	0.1	4.0	74.2	74.2	34.1	33.0	34.7
October-2015	0.7	0.7	1.3	0.0	5.5	74.0	74.0	34.2	33.0	34.8
November-2015	p 0.7	p 0.7	p 1.3	p 0.0	p 5.5	p 67.2	p 67.2	p 21.3	p 0.0	p 34.8

p: provisional

Table 9: Manufacturing: Yearly Change Rates for November 2014 - November 2015 (%)

contd.

Year / Month	Manufacture of coke, refined petroleum products etc.	Manufacture of refined petroleum products	Manufacture of chemicals and chemical products	Manufacture of basic chemicals	Manufacture of other chemical products	Manufacture of man-made fibres	Manufacture of rubber and plastic products	Manufacture of rubber products	Manufacture of plastics products
<i>ISIC</i>	D23	D232	D24	D241	D242	D243	D25	D251	D252
<i>weight</i>	22.94	22.94	10.15	0.54	9.45	0.16	3.90	0.76	3.14
November-2014	61.1	61.1	15.7	50.1	15.6	0.0	28.0	1.2	35.0
December-2014	30.9	30.9	24.3	54.8	24.3	0.0	34.6	2.9	43.1
January-2015	4.3	4.3	19.1	29.1	19.3	0.0	33.2	1.8	40.9
February-2015	-0.5	-0.5	18.8	8.1	19.3	0.0	36.8	-2.8	47.0
March-2015	-8.7	-8.7	18.8	8.1	19.3	0.0	38.6	-3.3	49.5
April-2015	-9.6	-9.6	17.0	8.1	17.5	0.0	38.9	-2.0	49.5
May-2015	-9.6	-9.6	16.3	8.1	16.8	0.0	45.9	8.3	55.4
June-2015	0.0	0.0	18.8	8.1	19.3	0.0	58.7	13.7	70.4
July-2015	-6.4	-6.4	19.8	7.2	20.4	0.0	40.6	11.7	47.5
August-2015	-28.0	-28.0	20.3	7.2	20.9	0.0	41.7	15.1	48.0
September-2015	-27.9	-27.9	47.4	7.2	49.0	0.0	30.5	17.1	33.2
October-2015	-34.5	-34.5	46.7	7.2	48.3	0.0	34.3	29.9	33.1
November-2015	-p 33.6	-p 33.6	p 47.8	-p 13.5	p 49.9	p 0.0	p 35.9	p 38.6	p 33.2

p: provisional

Table 9: Manufacturing: Yearly Change Rates for November 2014 - November 2015 (%)

contd.

Year / Month	Manufacture of other non-metallic min. products	Manufacture of non-metallic mineral products n.e.c.	Manufacture of basic metals	Manufacture of basic iron and steel	Manufacture of basic precious and non-ferrous metals	Manufacture of fabricated metal products, ...	Manufacture of structural metal products, tanks, reservoirs ...	Manufacture of other fabricated metal products ...	Manufacture of machinery ... n.e.c.	Manufacture of special-purpose machinery
<i>ISIC</i>	D26	D269	D27	D271	D272	D28	D281	D289	D29	D292
<i>weight</i>	8.20	8.20	5.02	2.02	2.65	3.70	1.55	2.15	0.42	0.42
November-2014	69.7	69.7	64.6	71.3	59.7	37.2	16.0	54.9	0.0	0.0
December-2014	71.5	71.5	69.6	71.1	68.4	36.7	17.1	52.7	0.0	0.0
January-2015	51.1	51.1	59.8	70.3	52.2	35.5	16.2	51.4	0.0	0.0
February-2015	45.6	45.6	56.9	65.5	50.6	34.6	16.2	49.6	0.0	0.0
March-2015	45.7	45.7	57.3	65.6	51.2	33.2	14.7	48.5	5.6	5.6
April-2015	29.0	29.0	39.7	45.3	35.6	40.4	29.5	48.6	5.6	5.6
May-2015	23.5	23.5	37.4	41.2	34.5	43.0	33.3	50.2	5.6	5.6
June-2015	30.8	30.8	41.3	40.8	41.7	50.8	38.6	60.0	5.6	5.6
July-2015	8.5	8.5	33.7	36.0	31.9	37.4	18.9	52.4	5.6	5.6
August-2015	0.0	0.0	9.0	-8.2	24.2	37.3	18.3	52.8	5.6	5.6
September-2015	0.2	0.2	4.2	-11.9	18.3	34.8	12.9	53.2	5.6	5.6
October-2015	4.8	4.8	3.9	-11.9	17.9	28.5	26.8	29.0	5.6	5.6
November-2015	p 4.8	p 4.8	p 3.3	-p 11.9	p 16.6	p 27.5	p 26.8	p 27.3	p 5.6	p 5.6

p: provisional

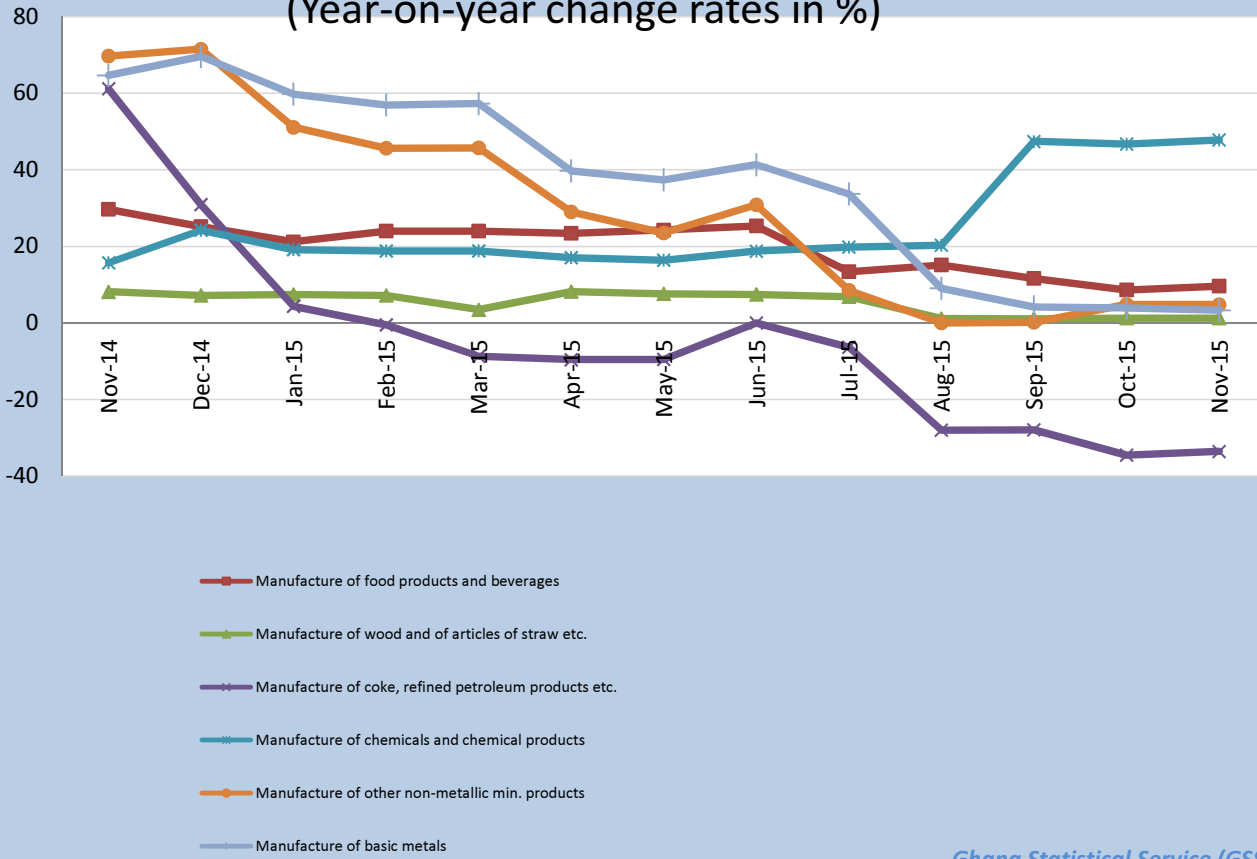
Table 9: Manufacturing: Yearly Change Rates for November 2014 - November 2015 (%)

contd.

Year / Month	Manufacture of electrical machinery and apparatus n.e.c.	Manufacture of insulated wire and cable	Manufacture of motor vehicles, trailers and semi-trailers	Manufacture of bodies for motor vehicles, trailers and semi-trailers	Manufacture of furniture; manufacturing n.e.c.	Manufacture of furniture	Manufacturing n.e.c.
<i>ISIC</i>	D31	<i>D313</i>	D34	<i>D342</i>	D36	<i>D361</i>	<i>D369</i>
<i>weight</i>	0.41	<i>0.41</i>	0.05	<i>0.05</i>	2.44	<i>2.33</i>	<i>0.11</i>
November-2014	21.9	21.9	38.8	38.8	31.8	32.3	16.7
December-2014	21.9	21.9	31.4	31.4	32.0	32.5	16.7
January-2015	33.2	33.2	18.5	18.5	25.3	25.6	16.3
February-2015	33.3	33.3	13.8	13.8	29.7	30.1	16.3
March-2015	35.1	35.1	9.4	9.4	36.7	37.4	16.3
April-2015	35.2	35.2	15.5	15.5	35.4	36.1	16.3
May-2015	35.2	35.2	10.7	10.7	33.2	33.7	16.3
June-2015	36.3	36.3	17.3	17.3	33.7	34.7	4.0
July-2015	44.4	44.4	-8.3	-8.3	23.8	24.6	1.0
August-2015	44.5	44.5	-5.4	-5.4	19.0	19.6	1.0
September-2015	44.4	44.4	-8.3	-8.3	20.5	21.1	1.8
October-2015	44.4	44.4	-0.2	-0.2	21.3	21.3	21.3
November-2015	p 24.7	p 24.7	-p 0.5	-p 0.5	p 21.8	p 21.8	p 21.3

p: provisional

PPI Inflation for selected subgroups in the Manufacturing Sector (Year-on-year change rates in %)



Ghana Statistical Service (GSS)

Table 10: Manufacturing: Monthly Change Rates for November 2014 - November 2015 (%)

Year / Month	Manufacturing	Manufacture of food products and beverages	Production, processing, preservation of meat, fish, fruit, vegetables, oils and fats	Manufacture of dairy products	Manufacture of grain mill products, starch products, and prepared animal feeds	Manufacture of other food products	Manufacture of beverages	Manufacture of textiles	Spinning, weaving and finishing of textiles
<i>ISIC weight</i>	D	D15	<i>D151</i>	<i>D152</i>	<i>D153</i>	<i>D154</i>	<i>D155</i>	D17	<i>D171</i>
	100	25.64	4.60	4.31	4.66	4.80	7.27	4.27	4.28
November-2014	-0.3	-0.5	0.9	0.0	-4.8	-0.4	1.0	0.0	0.0
December-2014	-2.0	1.5	4.3	0.0	-1.0	0.0	1.4	20.7	20.7
January-2015	-2.4	-0.1	0.2	0.0	0.0	-0.8	0.0	0.0	0.0
February-2015	1.5	4.2	0.2	0.0	-1.9	48.6	0.0	0.0	0.0
March-2015	0.6	2.2	9.7	0.0	0.9	0.5	2.1	0.0	0.0
April-2015	1.1	0.7	4.9	0.0	-1.6	2.2	0.0	2.6	2.6
May-2015	0.6	1.5	0.8	0.0	0.0	13.0	0.0	0.0	0.0
June-2015	5.3	1.5	7.0	-0.6	0.0	3.3	0.9	4.7	4.7
July-2015	2.5	-3.5	-14.5	0.0	6.1	-0.5	-7.7	3.3	3.3
August-2015	-5.9	1.7	5.7	0.0	3.0	2.8	0.0	0.0	0.0
September-2015	2.0	-0.9	-6.6	0.0	0.0	1.2	0.0	0.7	0.7
October-2015	-1.4	0.3	1.9	0.0	0.0	0.0	0.0	-0.7	-0.7
November-2015	p 0.2	p 0.4	p 0.2	p 0.0	p 0.0	p 2.1	p 0.4	p 0.5	p 0.5

p: provisional

Table 10: Manufacturing: Monthly Change Rates for November 2014 - November 2015 (%)

contd.

Year / Month	Tanning of leather; manu facture of luggage, etc	Manufacture of footwear	Manufacture of wood an of articles of straw etc.	Sawmilling and planing of wood	Manufacture of products of wood, cork, straw etc.	Manufacture of paper and paper products	Manufacture of paper and paper products	Publishing, printing and reproduction of rec. media	Publishing	Printing and service activities ...
<i>ISIC</i>	D19	<i>D192</i>	D20	<i>D201</i>	<i>D202</i>	D21	<i>D210</i>	D22	<i>D221</i>	<i>D222</i>
<i>weight</i>	0.12	<i>0.12</i>	9.03	<i>4.94</i>	<i>4.10</i>	0.62	<i>0.62</i>	1.14	<i>0.40</i>	<i>0.74</i>
November-2014	0.0	0.0	0.0	0.0	0.0	4.1	4.1	10.6	33.0	0.0
December-2014	-2.5	-2.5	0.0	0.0	0.0	2.5	2.5	-0.3	0.0	-0.8
January-2015	-24.9	-24.9	0.3	0.0	1.0	23.5	23.5	1.7	0.0	3.0
February-2015	1.3	1.3	-0.1	0.0	-0.4	0.0	0.0	0.3	0.0	0.5
March-2015	16.3	16.3	0.4	0.0	1.3	1.5	1.5	0.0	0.0	0.0
April-2015	0.0	0.0	0.4	0.3	0.0	3.5	3.5	27.2	0.0	56.0
May-2015	0.0	0.0	0.0	0.0	0.0	0.2	0.2	0.0	0.0	0.0
June-2015	16.4	16.4	0.3	0.0	0.9	6.3	6.3	0.0	0.0	0.0
July-2015	0.0	0.0	-0.5	-0.2	-0.6	-0.5	-0.5	-5.9	0.0	-15.3
August-2015	0.0	0.0	-5.4	-7.2	0.9	1.3	1.3	1.1	0.0	1.7
September-2015	0.3	0.3	0.2	0.0	0.7	17.1	17.1	-1.6	0.0	-2.4
October-2015	0.0	0.0	6.1	7.7	1.6	-0.1	-0.1	0.1	0.0	0.1
November-2015	p 0.0	p 0.0	p 0.0	p 0.0	p 0.0	p 0.0	p 0.0	p 0.0	p 0.0	p 0.0

p: provisional

Table 10: Manufacturing: Monthly Change Rates for November 2014 - November 2015 (%)

contd.

Year / Month	Manufacture of coke, refined petroleum products etc.	Manufacture of refined petroleum products	Manufacture of chemicals and chemical products	Manufacture of basic chemicals	Manufacture of other chemical products	Manufacture of man-made fibres	Manufacture of rubber and plastics products	Manufacture of rubber products	Manufacture of plastics products
<i>ISIC</i>	D23	<i>D232</i>	D24	<i>D241</i>	<i>D242</i>	<i>D243</i>	D25	<i>D251</i>	<i>D252</i>
<i>weight</i>	22.94	<i>22.94</i>	10.15	<i>0.54</i>	<i>9.45</i>	<i>0.16</i>	3.90	<i>0.76</i>	<i>3.14</i>
November-2014	-1.6	-1.6	0.3	24.0	0.0	0.0	-1.2	-6.2	0.0
December-2014	-15.3	-15.3	7.4	3.3	7.6	0.0	5.5	3.1	6.1
January-2015	-13.0	-13.0	-0.5	0.0	-0.5	0.0	7.6	0.8	8.7
February-2015	0.4	0.4	-0.2	-16.3	0.0	0.0	3.4	-2.3	4.6
March-2015	-2.3	-2.3	0.0	0.0	0.0	0.0	4.5	1.2	5.2
April-2015	0.4	0.4	5.7	0.0	6.0	0.0	0.4	1.0	0.3
May-2015	0.5	0.5	-0.1	0.0	-0.2	0.0	2.7	11.5	1.0
June-2015	10.8	10.8	4.7	0.0	4.8	0.0	9.5	8.0	9.8
July-2015	16.4	16.4	0.9	0.0	0.9	0.0	-4.1	-0.1	-4.9
August-2015	-23.0	-23.0	0.4	0.0	0.4	0.0	0.6	1.5	0.4
September-2015	1.2	1.2	22.5	0.0	23.3	0.0	-1.0	-0.3	-1.1
October-2015	-9.4	-9.4	0.0	0.0	0.0	0.0	2.7	9.6	0.0
November-2015	-p 0.1	-p 0.1	p 1.1	p 0.0	p 1.1	p 0.0	p 0.0	p 0.2	p 0.0

p: provisional

Table 10: Manufacturing: Monthly Change Rates for November 2014 - November 2015 (%)
contd.

Year / Month	Manufacture of other non-metallic min. products	Manufacture of non-metallic mineral products n.e.c.	Manufacture of basic metals	Manufacture of basic iron and steel	Manufacture of basic precious and non-ferrous metals	Manufacture of fabricated metal products, ...	Manufacture of structural metal products, tanks, reservoirs ...	Manufacture of other fabricated metal products ...	Manufacture of machinery ... n.e.c.	Manufacture of special-purpose machinery
<i>ISIC</i>	D26	<i>D269</i>	D27	<i>D271</i>	<i>D272</i>	D28	<i>D281</i>	<i>D289</i>	D29	<i>D292</i>
<i>weight</i>	8.20	<i>8.20</i>	5.02	<i>2.02</i>	<i>2.65</i>	3.70	<i>1.55</i>	<i>2.15</i>	0.42	<i>0.42</i>
November-2014	0.0	0.0	0.0	0.0	0.0	0.8	0.0	1.4	0.0	0.0
December-2014	1.1	1.1	3.6	0.0	6.3	0.4	0.9	0.0	0.0	0.0
January-2015	-1.1	-1.1	0.0	0.0	0.0	1.2	2.2	0.5	0.0	0.0
February-2015	0.0	0.0	0.6	0.3	0.9	0.0	0.0	0.0	0.0	0.0
March-2015	0.2	0.2	1.5	0.4	2.4	-0.1	0.0	-0.2	5.6	5.6
April-2015	-2.8	-2.8	-3.1	-9.6	2.1	8.4	13.0	5.0	0.0	0.0
May-2015	0.0	0.0	0.5	0.1	0.8	2.2	3.5	1.4	0.0	0.0
June-2015	6.5	6.5	3.5	-0.3	6.5	5.8	4.0	7.1	0.0	0.0
July-2015	1.6	1.6	-2.4	-3.4	-1.6	-5.4	-11.9	-0.1	0.0	0.0
August-2015	0.0	0.0	2.1	0.5	3.3	0.1	0.0	0.2	0.0	0.0
September-2015	-0.7	-0.7	-2.0	-0.1	-3.4	0.5	0.6	0.4	0.0	0.0
October-2015	0.1	0.1	-0.1	0.0	-0.2	12.6	14.3	10.7	0.0	0.0
November-2015	p 0.0	p 0.0	-p 0.6	p 0.0	-p 1.1	p 0.0	p 0.0	p 0.0	p 0.0	p 0.0

p: provisional

Table 10: Manufacturing: Monthly Change Rates for November 2014 - November 2015 (%)

contd.

Year / Month	Manufacture of electrical machinery and apparatus n.e.c.	Manufacture of insulated wire and cable	Manufacture of motor vehicles, trailers and semi-trailers	Manufacture of bodies for motor vehicles, trailers and semi-trailers	Manufacture of furniture; manufacturing n.e.c.	Manufacture of furniture	Manufacturing n.e.c.
<i>ISIC</i>	D31	<i>D313</i>	D34	<i>D342</i>	D36	<i>D361</i>	<i>D369</i>
<i>weight</i>	0.41	<i>0.41</i>	0.05	<i>0.05</i>	2.44	<i>2.33</i>	<i>0.11</i>
November-2014	15.9	15.9	0.9	0.9	-0.1	-0.1	0.0
December-2014	0.0	0.0	-2.0	-2.0	0.2	0.2	0.0
January-2015	14.8	14.8	-6.4	-6.4	0.4	0.4	0.0
February-2015	0.1	0.1	1.7	1.7	3.5	3.6	0.0
March-2015	1.4	1.4	2.0	2.0	6.2	6.4	0.0
April-2015	0.1	0.1	5.6	5.6	0.0	0.0	0.0
May-2015	0.0	0.0	5.9	5.9	0.7	0.8	0.0
June-2015	0.9	0.9	8.1	8.1	5.2	5.4	0.0
July-2015	5.9	5.9	-21.8	-21.8	-0.6	-0.6	0.0
August-2015	0.0	0.0	4.9	4.9	0.6	0.6	0.0
September-2015	0.0	0.0	-2.0	-2.0	2.8	2.8	1.2
October-2015	0.0	0.0	7.0	7.0	0.7	0.2	19.9
November-2015	p 0.0	p 0.0	p 0.6	p 0.6	p 0.3	p 0.3	p 0.0

p: provisional

Table 11: Utilities: Producer Price Index (Sept 2006=100) for November 2014 - November 2015

Year / Month	Electricity and water supply (Utilities)	Electricity supply	Production, transmission and distribution of electricity	Water supply	Collection, purification and distribution of water
<i>ISIC</i>	<i>E</i>	<i>E40</i>	<i>E401</i>	<i>E41</i>	<i>E410</i>
<i>weight</i>	100.00	93.25	93.25	6.75	6.75
November-2014	544.6	555.5	555.5	411.0	411.0
December-2014	545.0	555.9	555.9	410.9	410.9
January-2015	545.2	556.1	556.1	410.9	410.9
February-2015	546.3	557.4	557.4	410.9	410.9
March-2015	548.1	559.4	559.4	410.9	410.9
April-2015	573.1	584.4	584.4	434.0	434.0
May-2015	573.7	585.0	585.0	434.0	434.0
June-2015	575.7	587.3	587.3	434.0	434.0
July-2015	576.1	582.0	582.0	499.1	499.1
August-2015	578.7	584.8	584.8	499.1	499.1
September-2015	573.4	579.1	579.1	499.1	499.1
October-2015	573.4	579.1	579.1	499.1	499.1
November-2015	p 573.5	p 579.1	p 579.1	p 499.1	p 499.1

p: provisional

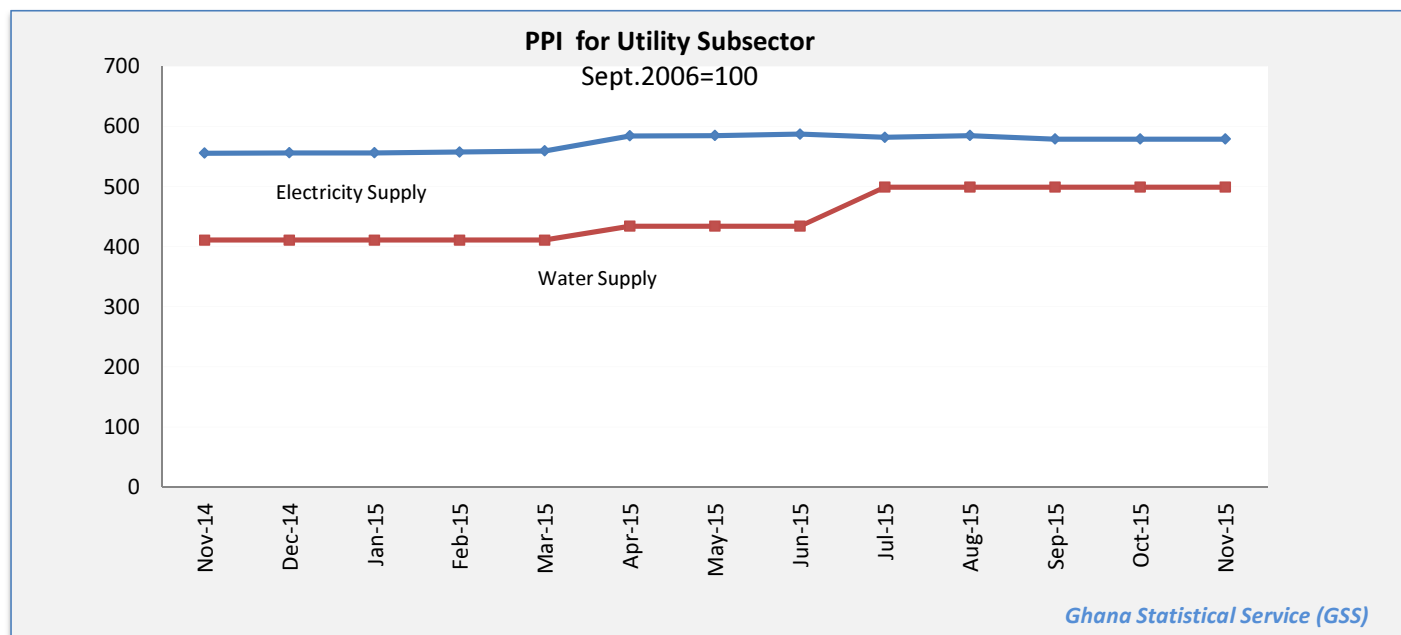


Table 12: Utilities: Yearly Change Rates for November 2014 - November 2015 (%)

Year / Month	Electricity and water supply (Utilities)	Electricity supply	Production, transmission and distribution of electricity	Water supply	Collection, purification and distribution of water
<i>ISIC</i>	<i>E</i>	<i>E40</i>	<i>E401</i>	<i>E41</i>	<i>E410</i>
<i>weight</i>	100.00	93.25	93.25	6.75	6.75
November-2014	27.6	28.7	28.7	13.3	13.3
December-2014	27.5	28.6	28.6	13.3	13.3
January-2015	15.8	16.5	16.5	6.1	13.8
February-2015	15.7	16.4	16.4	6.1	14.1
March-2015	15.8	16.5	16.5	6.1	6.1
April-2015	20.7	21.3	21.3	12.0	12.0
May-2015	20.6	21.2	21.2	12.0	12.0
June-2015	20.8	21.5	21.5	12.0	12.0
July-2015	7.3	6.4	6.4	21.4	21.4
August-2015	8.4	7.5	7.5	21.4	21.4
September-2015	7.2	6.2	6.2	21.4	21.4
October-2015	5.3	4.2	4.2	21.4	21.4
November-2015	p 5.3	p 4.3	p 4.3	p 21.4	p 21.4

p: provisional

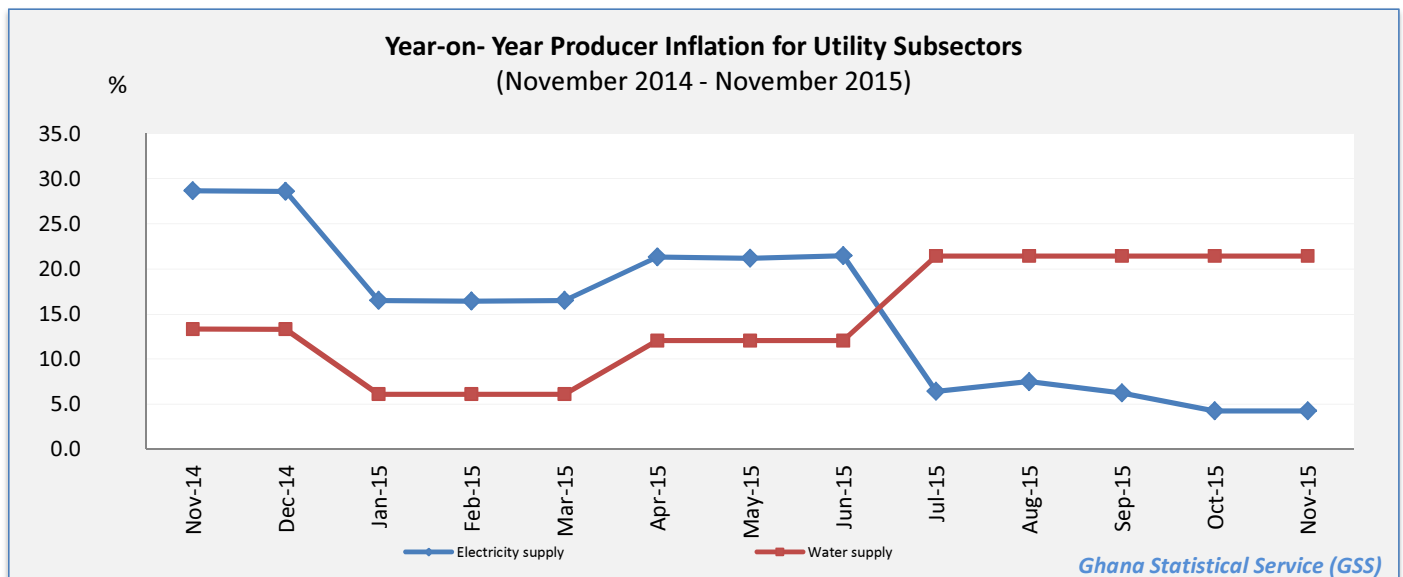


Table 13: Utilities: Monthly Change Rates for November 2014 - November 2015 (%)

Year / Month	Electricity and water supply (Utilities)	Electricity supply	Production, transmission and distribution of electricity	Water supply	Collection, purification and distribution of water
<i>ISIC</i>	<i>E</i>	<i>E40</i>	<i>E401</i>	<i>E41</i>	<i>E410</i>
<i>weight</i>	100.00	93.25	93.25	6.75	6.75
November-2014	0.0	0.0	0.0	0.0	0.0
December-2014	0.1	0.1	0.1	0.0	0.0
January-2015	0.0	0.0	0.0	0.0	0.0
February-2015	0.2	0.2	0.2	0.0	0.0
March-2015	0.3	0.4	0.4	0.0	0.0
April-2015	4.5	4.5	4.5	5.6	5.6
May-2015	0.1	0.1	0.1	0.0	0.0
June-2015	0.4	0.4	0.4	0.0	0.0
July-2015	0.1	-0.9	-0.9	15.0	15.0
August-2015	0.4	0.5	0.5	0.0	0.0
September-2015	-0.9	-1.0	-1.0	0.0	0.0
October-2015	0.0	0.0	0.0	0.0	0.0
November-2015	p 0.0	p 0.0	p 0.0	p 0.0	p 0.0

p: provisional

