



GHANA STATISTICAL SERVICE (GSS)
Statistics for Development and Progress

Statistical Bulletin

(PRODUCER PRICE INDEX PPI)
February, 2016

Ghana Statistical Service (GSS)

Statistical Bulletin

PRODUCER PRICE INDEX (PPI)
FEBRUARY, 2016

Date: March 23, 2016

**Producer Price Index (PPI)
February 2016**

CONTENTS

HIGHLIGHTS FOR FEBRUARY 2016	2
Table 1: Producer Price Index for February 2015 - February 2016	4
Table 2: Producer Price Index (Sep.2006=100) by sectors for February 2015 - February 2016	5
Table 3: Producer Price Index: Yearly Change Rates by Sector for February 2015 - February 2016(%)	6
Table 4: Producer Price Index: Monthly Change Rates by Sector for February 2015 - February 2016(%)	7
Table 5: Mining And Quarrying: Producer Price Index (Sept 2006=100) February 2015 - February 2016	8
Table 6: Mining and Quarrying: Yearly Change Rates for February 2015 - February 2016 (%)	9
Table 7: Mining and Quarrying: Monthly Change Rates for February 2015 - February 2016 (%)	10
Table 8: Manufacturing Producer Price Index (Sept 2006=100) for February 2015 - February 2016	11
Table 9: Manufacturing: Yearly Change Rates for February 2015 - February 2016 (%)	17
Table 10: Manufacturing: Monthly Change Rates for February 2015 - February 2016 (%)	23
Table 11: Utilities: Producer Price Index (Sept 2006=100) for February 2015 - February 2016	28
Table 12: Utilities: Yearly Change Rates for February 2015 - February 2016 (%)	29
Table 13: Utilities: Monthly Change Rates for February 2015 - February 2016 (%)	30

HIGHLIGHTS FOR FEBRUARY 2016

Producer Price Inflation Rate in February 2016 is 14.5%

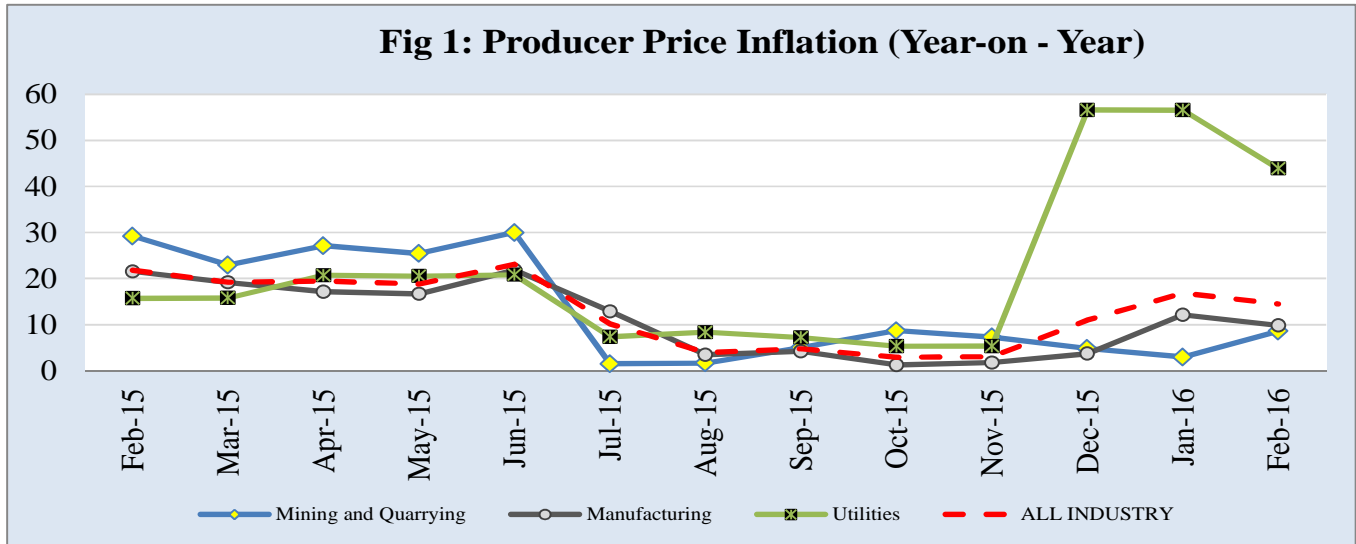
The Producer Price Index (PPI) measures the average change over time in the prices received by domestic producers for the production of their goods and services. The PPI for Ghana reports the producer price indices with reference to September 2006, the base period.

The Producer Price Index (PPI) measures the average change over time in the prices received by domestic producers for the production of their goods and services. The PPI for Ghana reports the producer price indices with reference to September 2006, the base period. This release shows the producer price changes since October 2006, as well as the annual (year-on-year) and monthly inflation rates, for all industry and three major sub-sectors of industry (Mining and Quarrying, Manufacturing, and Utilities) for the last twelve months. The figures for the month of February 2016 are provisional, and are subject to revision when additional data become available. All other indicators are final.

The Producer Price Inflation rate for February 2016 was 14.5 percent. This rate indicates that, between February 2015 and February 2016 (year-on-year), the PPI increased by 14.5 percent. This rate represents a 2.4 percentage point decrease in producer inflation relative to the rate recorded in January 2016 (16.9 %). There was no change in producer price index between the months of January and February 2016 .

The producer price inflation in the Mining and Quarrying sub-sector increased by 5.7 percentage points over the January 2016 rate of 2.9 percent, to record 8.6 percent in February 2016. Manufacturing, which constitutes more than two-thirds of total industry decreased by 2.3 percentage points to record 9.8 percent. The Utilities sub-sector recorded an inflation rate of 43.9 percent in February 2016 indicating a decrease of 12.7 percentage points over the January 2015 rate of 56.6 percent.

During the month of February 2016, ten out of the sixteen major groups in the manufacturing sub-sector recorded inflation rates higher than the sector average of 9.8 percent. Manufacture of paper and paper products recorded the highest inflation rate of 42.9 percent while the manufacture of basic metals recorded the lowest producer price inflation rate (-3.2%).



Manufacture of coke, refined petroleum products etc: Annual rate was 3.3 percent for January 2016, as compare to 0.5 percent in February 2016.

Manufacture of other non-metallic mineral product: Annual rate was 4.8 percent for January 2016, as compare to 7.9 percent in February 2016.

Manufacture of motor vehicles, trailers and semi-trailers: Annual rate was 12.4 percent in February 2016 as compared to 9.9 percent last month.

Electricity and Water Supply: Annual rate is 43.9 percent in February 2016 compared to 56.6 percent last month.

More detailed time series data is posted on the GSS website [www.statsghana.gov.gh].

The next release date is 27th April, 2016

Table 1: Producer Price Index for February 2015 - February 2016

Year / Month	Index level	Monthly	Yearly
	Sept 2006=100	Change Rate (%)	
February-15	456.8	2.1	21.8
March-15	461.1	0.9	19.2
April-15	473.8	2.8	19.5
May-15	477.2	0.7	18.8
June-15	498.0	4.4	23.1
July-15	490.4	-1.5	10.2
August-15	471.6	-3.8	3.9
September-15	481.2	2.1	4.8
October-15	478.7	-0.5	2.9
November-15	475.1	-0.7	3.0
December-15	503.9	6.1	11.0
January-16	523.1	3.8	16.9
February-16	p 523.1	p -0.0	p 14.5

p: provisional

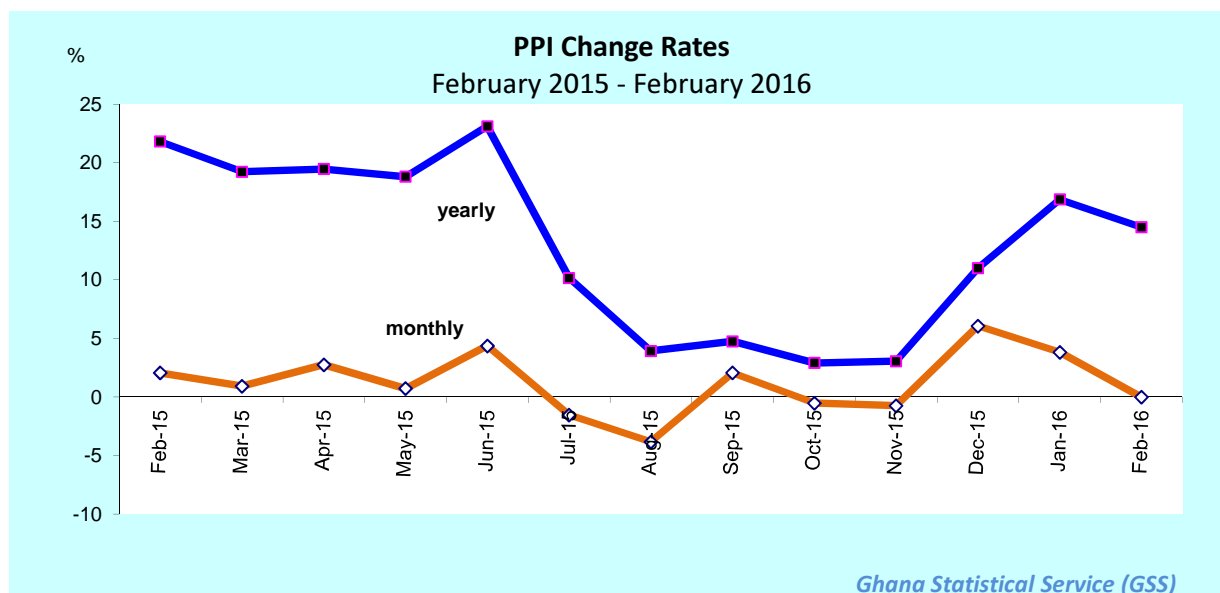


Table 2: Producer Price Index (Sep.2006=100) by sectors for February 2015 - February 2016

Year / Month	Mining and Quarrying	Manufacturing	Utilities	ALL INDUSTRY
<i>ISIC</i>	<i>C</i>	<i>D</i>	<i>E</i>	<i>C+D+E</i>
<i>weight</i>	13.97	69.75	16.28	100.00
February-2015	811.3	384.0	546.3	456.8
March-2015	837.4	386.2	548.1	461.1
April-2015	899.9	390.3	573.1	473.8
May-2015	917.9	392.8	573.7	477.2
June-2015	958.2	413.8	575.7	498.0
July-2015	783.1	424.3	576.1	490.4
August-2015	794.3	399.2	578.7	471.6
September-2015	837.6	407.3	573.4	481.2
October-2015	857.3	401.7	573.4	478.7
November-2015	810.3	402.5	573.5	475.1
December-2015	798.6	400.8	853.6	503.9
January-2016	817.1	420.9	853.7	523.1
February-2016	p 881.1	p 421.7	p 786.3	p 523.1

p: provisional

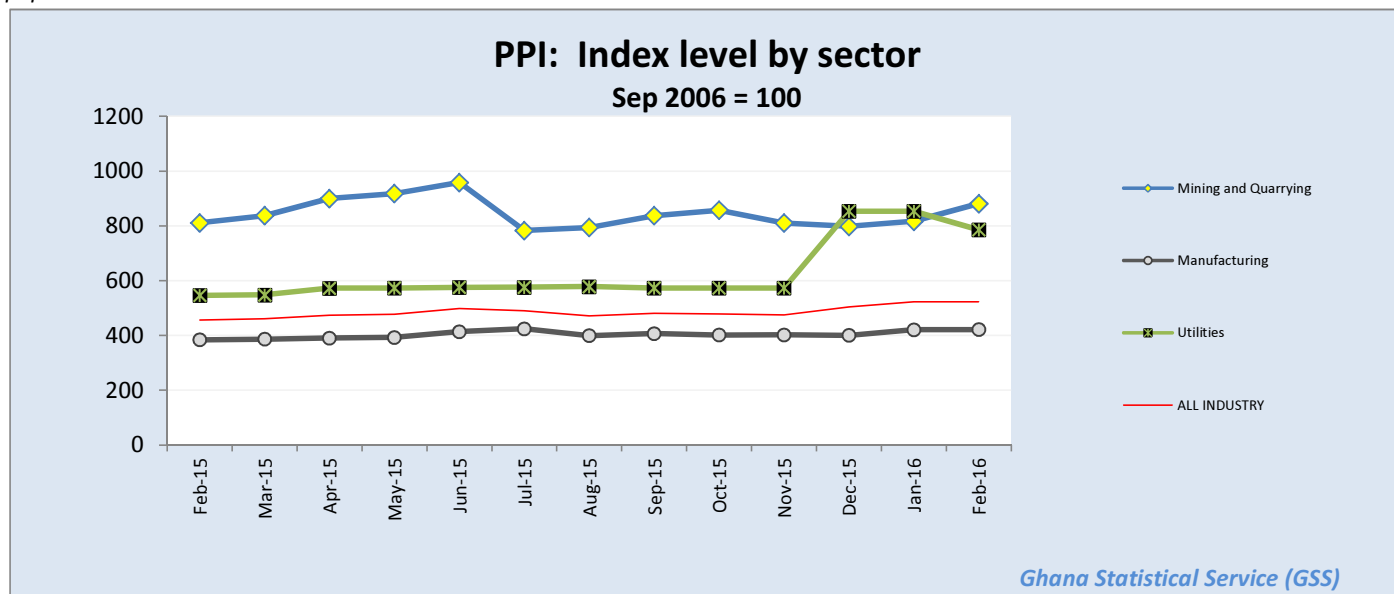


Table 3: Producer Price Index: Yearly Change Rates by Sector for February 2015 - February 2016(%)

Year / Month	Mining and Quarrying	Manufacturing	Utilities	ALL INDUSTRY
<i>ISIC</i>	<i>C</i>	<i>D</i>	<i>E</i>	<i>C+D+E</i>
<i>weight</i>	13.97	69.75	16.28	100.00
February-2015	29.3	21.5	15.7	21.8
March-2015	23.0	19.2	15.8	19.2
April-2015	27.1	17.2	20.7	19.5
May-2015	25.4	16.7	20.6	18.8
June-2015	30.0	21.9	20.8	23.1
July-2015	1.5	12.9	7.3	10.2
August-2015	1.7	3.5	8.4	3.9
September-2015	5.0	4.2	7.2	4.8
October-2015	8.7	1.2	5.3	2.9
November-2015	7.3	1.7	5.3	3.0
December-2015	4.8	3.7	56.6	11.0
January-2016	2.9	12.1	56.6	16.9
February-2016	p 8.6	p 9.8	p 43.9	p 14.5

p: provisional

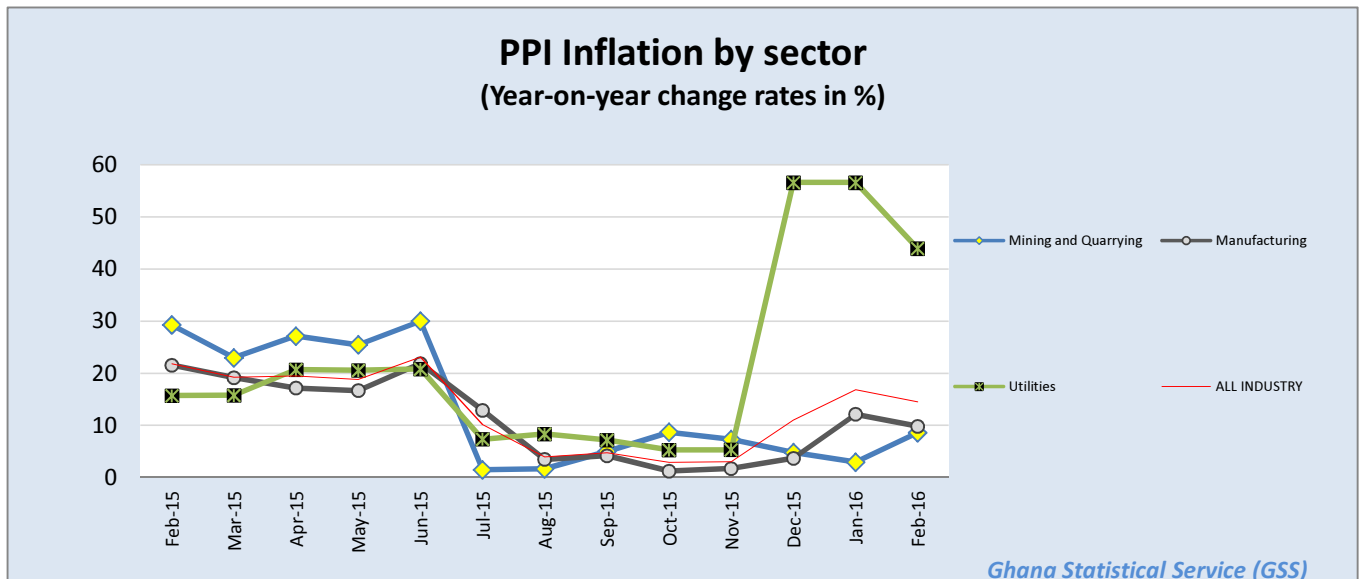


Table 4: Producer Price Index: Monthly Change Rates by Sector for February 2015 - February 2016(%)

Year / Month	Mining and Quarrying	Manufacturing	Utilities	ALL INDUSTRY
<i>ISIC</i>	<i>C</i>	<i>D</i>	<i>E</i>	<i>C+D+E</i>
<i>weight</i>	13.97	69.75	16.28	100.00
February-2015	2.2	2.3	0.2	2.1
March-2015	3.2	0.6	0.3	0.9
April-2015	7.5	1.1	4.5	2.8
May-2015	2.0	0.6	0.1	0.7
June-2015	4.4	5.3	0.4	4.4
July-2015	-18.3	2.5	0.1	-1.5
August-2015	1.4	-5.9	0.4	-3.8
September-2015	5.4	2.0	-0.9	2.1
October-2015	2.4	-1.4	0.0	-0.5
November-2015	-5.5	0.2	0.0	-0.7
December-2015	-1.4	-0.4	48.8	6.1
January-2016	2.3	5.0	0.0	3.8
February-2016	p 7.8	p 0.2	p -7.9	p -0.0

p: provisional

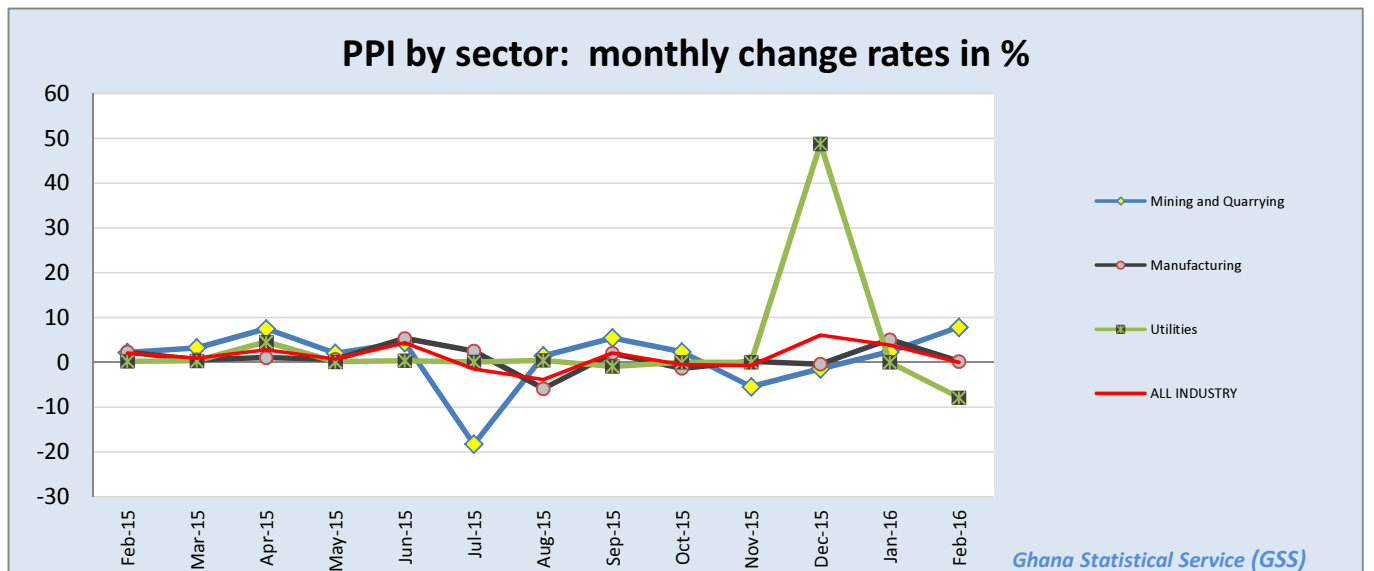


Table 5: Mining And Quarrying: Producer Price Index (Sept 2006=100) February 2015 - February 2016

Year / Month	Mining and Quarrying	Mining of metal ores	Mining of non-ferrous metal ores	Other mining and quarrying	Quarrying of stone, sand & clay	Mining and quarrying n.e.c.
ISIC	C	C13	C132	C14	C141	C142
weight	100.00	95.01	95.01	4.99	3.42	0.87
February-2015	811.3	867.3	867.3	154.0	148.3	178.3
March-2015	837.4	896.3	896.3	154.0	148.3	178.3
April-2015	899.9	966.0	966.0	154.0	148.3	178.3
May-2015	917.9	986.2	986.2	154.0	148.3	178.3
June-2015	958.2	1031.2	1031.2	154.0	148.3	178.3
July-2015	783.1	832.7	832.7	169.6	149.8	276.2
August-2015	794.3	842.4	842.4	184.0	149.8	412.5
September-2015	837.6	890.0	890.0	184.5	150.3	412.5
October-2015	857.3	911.8	911.8	184.5	150.3	412.5
November-2015	810.3	859.9	859.9	184.5	150.3	412.5
December-2015	798.6	846.2	846.2	188.7	150.3	460.6
January-2016	817.1	866.7	866.7	188.7	150.3	460.6
February-2016	p 881.1	p 937.3	p 937.3	p 188.7	p 150.3	p 460.6

p: provisional

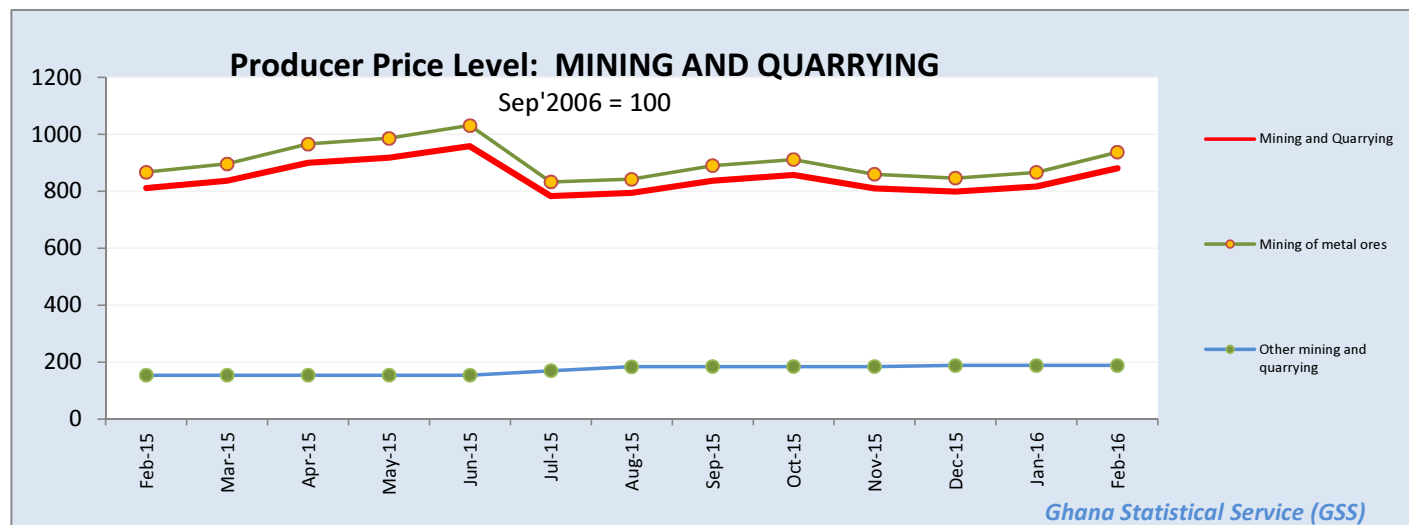


Table 6: Mining and Quarrying: Yearly Change Rates for February 2015 - February 2016 (%)

Year / Month	Mining and Quarrying	Mining of metal ores	Mining of non-ferrous metal ores	Other mining and quarrying	Quarrying of stone, sand & clay	Mining and quarrying n.e.c.
ISIC	C	C13	C132	C14	C141	C142
weight	100.00	95.01	95.01	4.99	3.42	0.87
February-2015	29.3	30.3	30.3	6.5	5.5	10.2
March-2015	23.0	23.7	23.7	6.5	5.5	10.2
April-2015	27.1	28.0	28.0	6.5	5.5	10.2
May-2015	25.4	26.3	26.3	6.5	5.5	10.2
June-2015	30.0	31.1	31.1	6.5	5.5	10.2
July-2015	1.5	0.9	0.9	17.3	6.6	70.7
August-2015	1.7	0.8	0.8	24.7	6.6	131.3
September-2015	5.0	4.3	4.3	25.1	6.9	131.3
October-2015	8.7	8.1	8.1	25.1	6.9	131.3
November-2015	7.3	6.7	6.7	25.1	6.9	131.3
December-2015	4.8	3.9	3.9	27.9	6.9	158.3
January-2016	2.9	2.2	2.2	22.5	1.3	158.3
February-2016	p 8.6	p 8.1	p 8.1	p 22.5	p 1.3	p 158.3

p: provisional

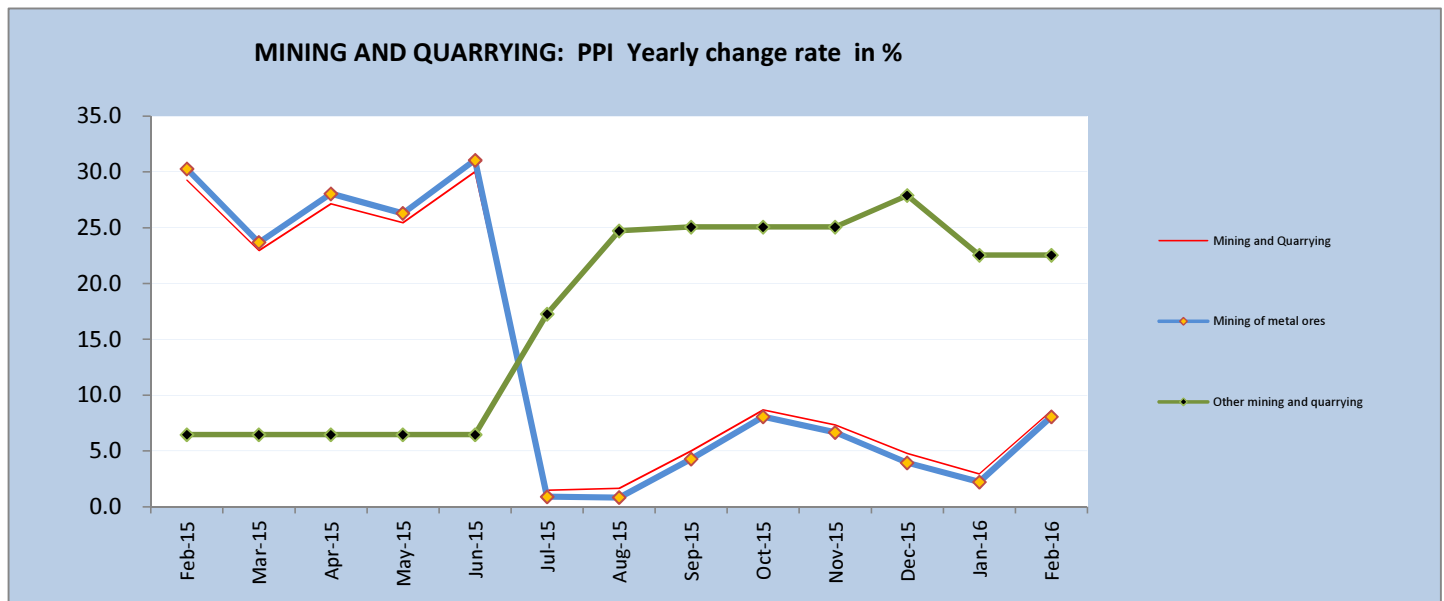


Table 7: Mining and Quarrying: Monthly Change Rates for February 2015 - February 2016 (%)

Year / Month	Mining and Quarrying	Mining of metal ores	Mining of non-ferrous metal ores	Other mining and quarrying	Quarrying of stone, sand & clay	Mining and quarrying n.e.c.
ISIC	C	C13	C132	C14	C141	C142
weight	100.00	95.01	95.01	4.99	3.42	0.87
February-2015	2.2	2.3	2.3	0.0	0.0	0.0
March-2015	3.2	3.3	3.3	0.0	0.0	0.0
April-2015	7.5	7.8	7.8	0.0	0.0	0.0
May-2015	2.0	2.1	2.1	0.0	0.0	0.0
June-2015	4.4	4.6	4.6	0.0	0.0	0.0
July-2015	-18.3	-19.3	-19.3	10.2	1.0	54.9
August-2015	1.4	1.2	1.2	8.5	0.0	49.4
September-2015	5.4	5.7	5.7	0.3	0.3	0.0
October-2015	2.4	2.4	2.4	0.0	0.0	0.0
November-2015	-5.5	-5.7	-5.7	0.0	0.0	0.0
December-2015	-1.4	-1.6	-1.6	2.3	0.0	11.7
January-2016	2.3	2.4	2.4	0.0	0.0	0.0
February-2016	p 7.8	p 8.2	p 8.2	p 0.0	p 0.0	p 0.0

p: provisional

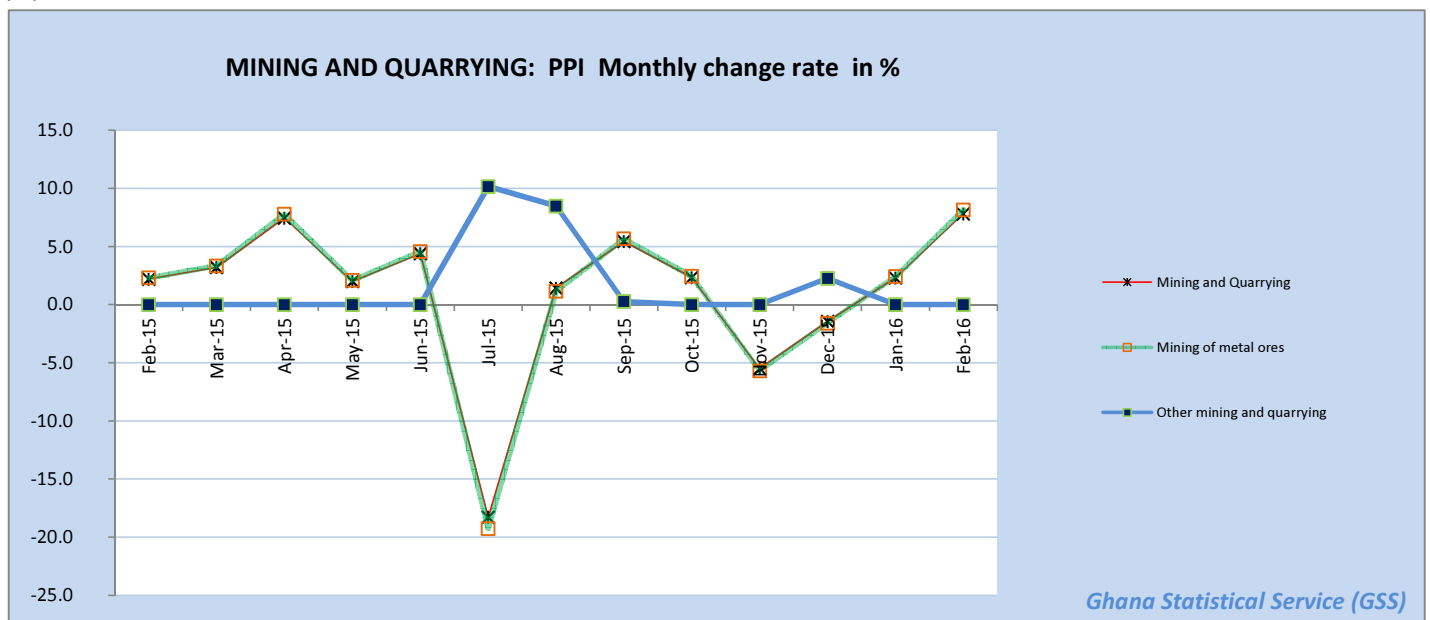


Table 8: Manufacturing Producer Price Index (Sept 2006=100) for February 2015 - February 2016

Year / Month	Manufacturing	Manufacture of food products and beverages	Production, processing, preservation of meat, fish, fruit, vegetables, oils and fats	Manufacture of dairy products	Manufacture of grain mill products, starch products, and prepared animal feeds	Manufacture of other food products	Manufacture of beverages	Manufacture of textiles	Spinning, weaving and finishing of textiles
<i>ISIC</i>	D	D15	<i>D151</i>	<i>D152</i>	<i>D153</i>	<i>D154</i>	<i>D155</i>	D17	<i>D171</i>
<i>weight</i>	100	25.64	4.60	4.31	4.66	4.80	7.27	4.27	4.28
February-2015	384.0	422.8	563.8	354.0	520.7	368.2	403.1	434.4	434.4
March-2015	386.2	432.1	618.7	354.0	525.2	370.0	411.6	434.4	434.4
April-2015	390.3	435.1	648.9	354.0	516.9	378.0	411.6	445.6	445.6
May-2015	392.8	441.5	653.8	354.0	516.9	427.2	411.6	445.6	445.6
June-2015	413.8	448.0	699.7	352.0	516.9	441.2	415.3	466.8	466.8
July-2015	424.3	432.3	598.1	352.0	548.6	439.0	383.2	482.0	482.0
August-2015	399.2	439.6	632.5	352.0	565.1	451.1	383.2	482.0	482.0
September-2015	407.3	435.6	590.9	352.0	565.1	456.4	383.2	485.4	485.4
October-2015	401.7	436.8	602.0	352.0	565.1	456.4	383.2	482.0	482.0
November-2015	402.5	438.5	603.4	352.0	565.1	465.8	384.9	484.2	484.2
December-2015	400.8	436.5	607.3	352.0	565.1	465.8	377.1	484.6	484.6
January-2016	420.9	437.4	612.7	352.0	565.1	468.3	377.1	484.6	484.6
February-2016	p 421.7	p 438.6	p 615.9	p 352.0	p 565.1	p 468.6	p 380.0	p 484.6	p 484.6

p: provisional

Table 8: Manufacturing Producer Price Index (Sept 2006=100) for February 2015 - February 2016

contd.

Year / Month	Tanning of leather; manu facture of luggage, etc	Manufacture of footwear	Manufacture of wood an of articles of straw etc.	Sawmilling and planing of wood	Manufacture of products of wood, cork, straw etc.	Manufacture of paper and paper products	Manufacture of paper and paper products	Publishing, printing and reproduction of rec. media	Publishing	Printing and service activities ...
ISIC	D19	D192	D20	D201	D202	D21	D210	D22	D221	D222
weight	0.12	0.12	9.03	4.94	4.10	0.62	0.62	1.14	0.40	0.74
February-2015	279.8	279.8	226.5	221.9	239.0	376.4	376.4	597.5	665.2	563.6
March-2015	325.5	325.5	227.4	221.9	242.0	381.9	381.9	597.5	665.2	563.6
April-2015	325.5	325.5	228.2	222.5	242.0	395.4	395.4	760.3	665.2	879.1
May-2015	325.5	325.5	228.2	222.5	242.1	396.1	396.1	760.3	665.2	879.1
June-2015	378.8	378.8	228.8	222.5	244.1	421.2	421.2	760.3	665.2	879.1
July-2015	378.8	378.8	227.6	222.0	242.6	419.1	419.1	715.8	665.2	745.0
August-2015	378.8	378.8	215.4	205.9	244.9	424.7	424.7	723.4	665.2	757.4
September-2015	379.9	379.9	215.8	205.9	246.7	497.5	497.5	712.2	665.2	739.3
October-2015	379.9	379.9	229.0	221.8	250.7	497.1	497.1	712.6	665.2	739.9
November-2015	379.9	379.9	229.0	221.8	250.7	497.1	497.1	712.6	665.2	739.9
December-2015	379.9	379.9	237.5	232.0	253.8	329.3	329.3	712.6	665.2	739.9
January-2016	379.9	379.9	294.7	301.6	275.9	521.6	521.6	717.4	665.2	747.7
February-2016	p 379.9	p 379.9	p 294.9	p 301.6	p 276.8	p 537.9	p 537.9	p 717.4	p 665.2	p 747.7

p: provisional

Table 8: Manufacturing Producer Price Index (Sept 2006=100) for February 2015 - February 2016

contd.

Year / Month	Manufacture of coke, refined petroleum products etc.	Manufacture of refined petroleum products	Manufacture of chemicals and chemical products	Manufacture of basic chemicals	Manufacture of other chemical products	Manufacture of man-made fibres	Manufacture of rubber and plastics products	Manufacture of rubber products	Manufacture of plastics products
<i>ISIC</i>	D23	D232	D24	D241	D242	D243	D25	D251	D252
<i>weight</i>	22.94	22.94	10.15	0.54	9.45	0.16	3.90	0.76	3.14
February-2015	368.1	368.1	293.1	357.8	297.1	109.6	355.1	239.6	386.1
March-2015	359.6	359.6	293.1	357.8	297.1	109.6	371.0	242.5	406.1
April-2015	361.1	361.1	309.9	357.8	314.9	109.6	372.4	245.0	407.1
May-2015	362.8	362.8	309.5	357.8	314.3	109.6	382.6	273.1	411.0
June-2015	402.2	402.2	324.1	357.8	329.5	109.6	418.9	295.0	451.3
July-2015	468.1	468.1	327.0	357.8	332.6	109.6	401.6	294.7	429.0
August-2015	360.3	360.3	328.3	357.8	334.0	109.6	403.9	299.2	430.6
September-2015	364.6	364.6	402.3	357.8	411.8	109.6	400.0	298.1	425.9
October-2015	330.5	330.5	402.3	357.8	411.8	109.6	410.8	326.8	425.8
November-2015	330.3	330.3	406.6	357.8	416.3	109.6	411.0	327.3	425.9
December-2015	329.5	329.5	409.7	357.8	419.6	109.6	409.1	316.3	425.9
January-2016	378.9	378.9	409.7	357.8	419.6	109.6	411.1	327.6	426.0
February-2016	p 370.0	p 370.0	p 415.7	p 357.8	p 425.9	p 109.6	p 419.1	p 327.6	p 435.5

p: provisional

Table 8: Manufacturing Producer Price Index (Sept 2006=100) for February 2015 - February 2016
contd.

Year / Month	Manufacture of other non-metallic min. products	Manufacture of non-metallic mineral products n.e.c.	Manufacture of basic metals	Manufacture of basic iron and steel	Manufacture of basic precious and non-ferrous metals	Manufacture of fabricated metal products, ...	Manufacture of structural metal products, tanks, reservoirs ...	Manufacture of other fabricated metal products ...	Manufacture of machinery ... n.e.c.	Manufacture of special-purpose machinery
ISIC	D26	D269	D27	D271	D272	D28	D281	D289	D29	D292
weight	8.20	8.20	5.02	2.02	2.65	3.70	1.55	2.15	0.42	0.42
February-2015	457.7	457.7	373.5	464.2	316.6	513.3	475.1	543.0	676.2	676.2
March-2015	458.8	458.8	379.2	465.9	324.2	512.8	475.0	542.1	714.3	714.3
April-2015	446.1	446.1	367.3	421.1	331.0	555.8	536.6	569.0	714.3	714.3
May-2015	446.1	446.1	369.1	421.6	333.5	568.2	555.1	577.1	714.3	714.3
June-2015	475.0	475.0	382.2	420.6	355.3	601.3	577.2	617.9	714.3	714.3
July-2015	482.4	482.4	373.1	406.3	349.7	568.9	508.3	617.0	714.3	714.3
August-2015	482.5	482.5	380.8	408.2	361.1	569.7	508.3	618.5	714.3	714.3
September-2015	479.2	479.2	373.1	407.8	348.6	572.4	511.3	620.9	714.3	714.3
October-2015	479.6	479.6	372.7	407.8	348.0	644.3	584.4	687.1	714.3	714.3
November-2015	479.6	479.6	370.4	407.8	344.2	644.3	584.4	687.1	714.3	714.3
December-2015	483.0	483.0	351.4	366.1	340.7	608.6	513.3	687.1	714.3	714.3
January-2016	477.7	477.7	358.7	383.4	341.0	613.3	513.3	696.4	714.3	714.3
February-2016	p 494.0	p 494.0	p 361.4	p 383.4	p 345.6	p 613.3	p 513.3	p 696.4	p 714.3	p 714.3

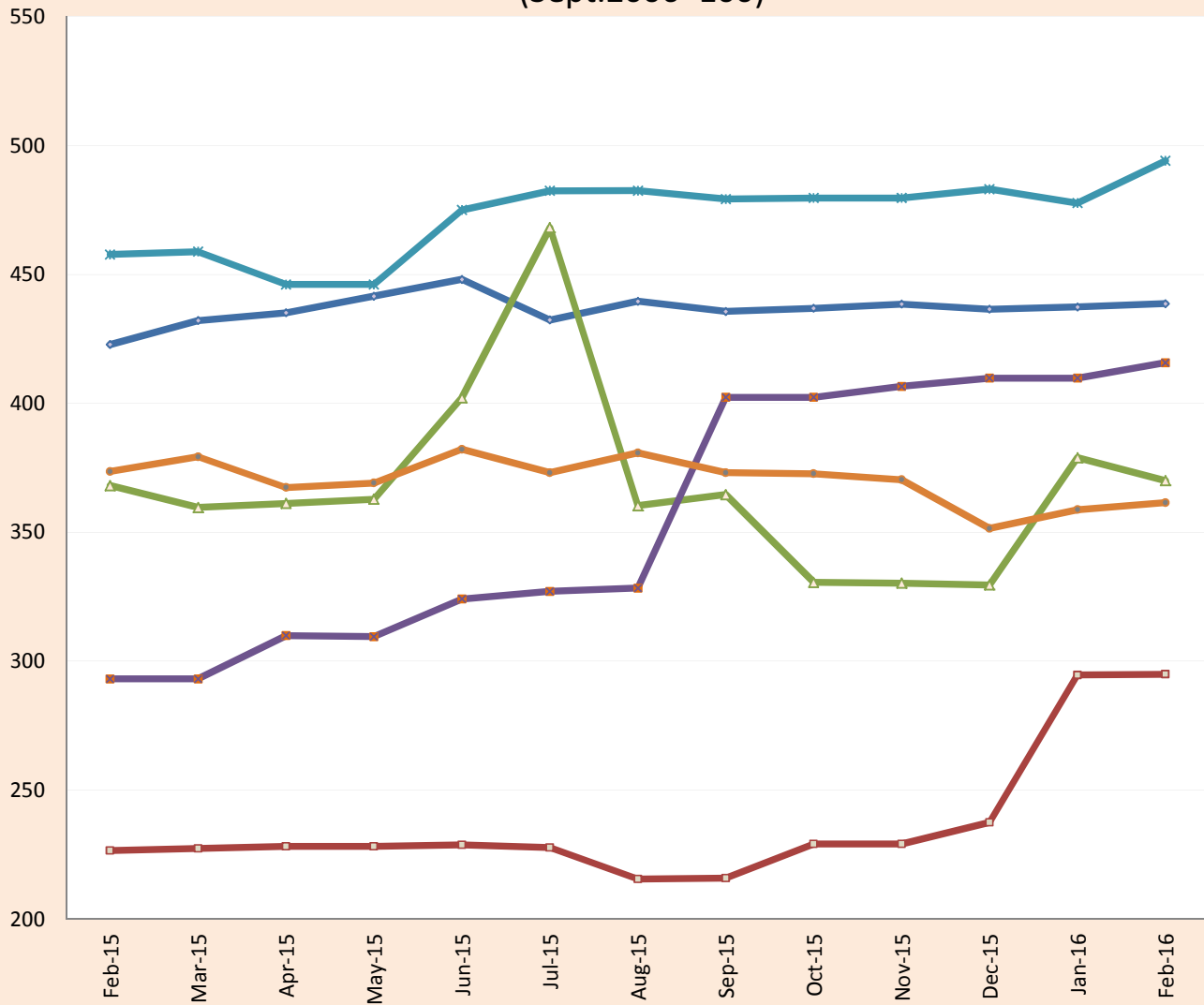
p: provisional

Table 8: Manufacturing Producer Price Index (Sept 2006=100) for February 2015 - February 2016
contd.

Year / Month	Manufacture of electrical machinery and apparatus n.e.c.	Manufacture of insulated wire and cable	Manufacture of motor vehicles, trailers and semi-trailers	Manufacture of bodies for motor vehicles, trailers and semi-trailers	Manufacture of furniture; manufacturing n.e.c.	Manufacture of furniture	Manufacturing n.e.c.
<i>ISIC</i>	D31	<i>D313</i>	D34	<i>D342</i>	D36	<i>D361</i>	<i>D369</i>
<i>weight</i>	0.41	<i>0.41</i>	0.05	<i>0.05</i>	2.44	<i>2.33</i>	<i>0.11</i>
February-2015	275.3	275.3	369.0	369.0	475.0	474.7	485.4
March-2015	279.3	279.3	376.3	376.3	504.6	505.2	485.4
April-2015	279.4	279.4	397.3	397.3	504.6	505.2	485.4
May-2015	279.5	279.5	420.6	420.6	508.4	509.1	485.4
June-2015	282.0	282.0	454.8	454.8	534.9	536.5	485.4
July-2015	298.8	298.8	355.5	355.5	531.8	533.2	485.4
August-2015	298.9	298.9	373.0	373.0	535.0	536.5	485.4
September-2015	298.9	298.9	365.5	365.5	549.9	551.7	491.0
October-2015	298.9	298.9	391.3	391.3	553.7	552.7	588.7
November-2015	298.9	298.9	393.8	393.8	555.3	554.4	588.7
December-2015	298.9	298.9	398.7	398.7	553.6	552.6	588.7
January-2016	298.9	298.9	398.7	398.7	554.2	553.3	588.7
February-2016	p 298.9	p 298.9	p 415.0	p 415.0	p 554.2	p 553.3	p 588.7

p: provisional

PPI for Selected Subgroups in the Manufacturing Sector (Sept.2006=100)



- ◆ Manufacture of food products and beverages
- ▲ Manufacture of coke, refined petroleum products etc.
- ✕ Manufacture of other non-metallic min. products
- Manufacture of wood and articles of straw etc.
- Manufacture of chemicals and chemical products
- Manufacture of basic metals

Ghana Statistical Service (GSS)

Table 9: Manufacturing: Yearly Change Rates for February 2015 - February 2016 (%)

Year / Month	Manufacturing	Manufacture of food products and beverages	Production, processing, preservation of meat, fish, fruit, vegetables, oils and fats	Manufacture of dairy products	Manufacture of grain mill products, starch products, and prepared animal feeds	Manufacture of other food products	Manufacture of beverages	Manufacture of textiles	Spinning, weaving and finishing of textiles
<i>ISIC</i>	D	D15	<i>D151</i>	<i>D152</i>	<i>D153</i>	<i>D154</i>	<i>D155</i>	D17	<i>D171</i>
<i>weight</i>	100	25.64	4.60	4.31	4.66	4.80	7.27	4.27	4.28
February-2015	21.5	24.0	28.6	18.6	36.8	17.2	22.4	34.8	34.8
March-2015	19.2	23.9	32.2	17.0	34.3	14.2	24.9	34.8	34.8
April-2015	17.2	23.4	31.7	17.0	32.2	13.3	24.9	38.2	38.2
May-2015	16.7	24.3	26.4	17.0	32.2	27.7	24.9	38.2	38.2
June-2015	21.9	25.3	32.7	16.3	32.2	28.0	26.0	44.3	44.3
July-2015	12.9	13.4	10.5	16.3	5.7	22.1	13.5	49.0	49.0
August-2015	3.5	15.1	13.7	16.3	8.9	74.9	0.1	33.9	33.9
September-2015	4.2	11.6	6.5	16.3	0.3	75.6	-2.6	34.9	34.9
October-2015	1.2	8.6	12.7	-0.6	0.3	81.9	-2.6	33.9	33.9
November-2015	1.7	9.6	12.0	-0.6	5.4	86.5	-3.1	34.5	34.5
December-2015	3.7	7.5	8.1	-0.6	6.5	86.5	-6.4	11.6	11.6
January-2016	12.1	7.8	8.9	-0.6	6.5	89.0	-6.4	11.6	11.6
February-2016	p 9.8	p 3.8	p 9.2	-p 0.6	p 8.5	p 27.3	-p 5.7	p 11.6	p 11.6

p: provisional

Table 9: Manufacturing Producer Price Index Yearly Change Rates for February 2015 - February 2016 (%)
contd.

Year / Month	Tanning of leather; manufacture of luggage, etc	Manufacture of footwear	Manufacture of wood and of articles of straw etc.	Sawmilling and planing of wood	Manufacture of products of wood, cork, straw etc.	Manufacture of paper and paper products	Manufacture of paper and paper products	Publishing, printing and reproduction of rec. media	Publishing	Printing and service activities ...
ISIC	D19	D192	D20	D201	D202	D21	D210	D22	D221	D222
weight	0.12	0.12	9.03	4.94	4.10	0.62	0.62	1.14	0.40	0.74
February-2015	-13.4	-13.4	7.2	8.2	4.0	47.9	47.9	22.1	33.0	16.6
March-2015	0.8	0.8	3.5	2.6	5.1	50.1	50.1	22.1	33.0	16.6
April-2015	3.9	3.9	8.2	8.5	6.1	55.4	55.4	55.2	33.0	81.5
May-2015	3.9	3.9	7.6	8.1	4.9	55.6	55.6	50.4	33.0	72.8
June-2015	2.0	2.0	7.4	8.1	4.1	52.3	52.3	48.4	33.0	69.3
July-2015	0.5	0.5	6.9	7.8	3.5	46.7	46.7	35.5	33.0	36.9
August-2015	0.5	0.5	1.1	0.0	4.4	48.7	48.7	37.0	33.0	39.2
September-2015	0.3	0.3	1.1	0.1	4.0	74.2	74.2	34.1	33.0	34.7
October-2015	0.7	0.7	1.3	0.0	5.5	74.0	74.0	34.2	33.0	34.8
November-2015	0.7	0.7	1.3	0.0	5.5	67.2	67.2	21.3	0.0	34.8
December-2015	38.5	38.5	11.1	12.7	6.8	19.8	19.8	20.9	0.0	34.1
January-2016	37.5	37.5	37.2	46.5	13.9	89.8	89.8	20.1	0.0	32.7
February-2016	p 35.8	p 35.8	p 30.2	p 35.9	p 15.8	p 42.9	p 42.9	p 20.1	p 0.0	p 32.7

p: provisional

Table 9: Manufacturing: Yearly Change Rates for February 2015 - February 2016 (%)

contd.

Year / Month	Manufacture of coke, refined petroleum products etc.	Manufacture of refined petroleum products	Manufacture of chemicals and chemical products	Manufacture of basic chemicals	Manufacture of other chemical products	Manufacture of man-made fibres	Manufacture of rubber and plastic products	Manufacture of rubber products	Manufacture of plastics products
<i>ISIC</i>	D23	D232	D24	D241	D242	D243	D25	D251	D252
<i>weight</i>	22.94	22.94	10.15	0.54	9.45	0.16	3.90	0.76	3.14
February-2015	-0.5	-0.5	18.8	8.1	19.3	0.0	36.8	-2.8	47.0
March-2015	-8.7	-8.7	18.8	8.1	19.3	0.0	38.6	-3.3	49.5
April-2015	-9.6	-9.6	17.0	8.1	17.5	0.0	38.9	-2.0	49.5
May-2015	-9.6	-9.6	16.3	8.1	16.8	0.0	45.9	8.3	55.4
June-2015	0.0	0.0	18.8	8.1	19.3	0.0	58.7	13.7	70.4
July-2015	-6.4	-6.4	19.8	7.2	20.4	0.0	40.6	11.7	47.5
August-2015	-28.0	-28.0	20.3	7.2	20.9	0.0	41.7	15.1	48.0
September-2015	-27.9	-27.9	47.4	7.2	49.0	0.0	30.5	17.1	33.2
October-2015	-34.5	-34.5	46.7	7.2	48.3	0.0	34.3	29.9	33.1
November-2015	-33.6	-33.6	47.8	-13.5	49.9	0.0	35.9	38.6	33.2
December-2015	-21.8	-21.8	38.7	-16.3	40.5	0.0	30.6	30.0	28.4
January-2016	3.3	3.3	39.4	-16.3	41.2	0.0	24.1	33.6	20.6
February-2016	p 0.5	p 0.5	p 41.8	p 0.0	p 43.4	p 0.0	p 18.0	p 36.7	p 12.8

p: provisional

Table 9: Manufacturing: Yearly Change Rates for February 2015 - February 2016 (%)

contd.

Year / Month	Manufacture of other non-metallic min. products	Manufacture of non-metallic mineral products n.e.c.	Manufacture of basic metals	Manufacture of basic iron and steel	Manufacture of basic precious and non-ferrous metals	Manufacture of fabricated metal products, ...	Manufacture of structural metal products, tanks, reservoirs ...	Manufacture of other fabricated metal products ...	Manufacture of machinery ... n.e.c.	Manufacture of special-purpose machinery
<i>ISIC</i>	D26	<i>D269</i>	D27	<i>D271</i>	<i>D272</i>	D28	<i>D281</i>	<i>D289</i>	D29	<i>D292</i>
<i>weight</i>	8.20	8.20	5.02	2.02	2.65	3.70	1.55	2.15	0.42	0.42
February-2015	45.6	45.6	56.9	65.5	50.6	34.6	16.2	49.6	0.0	0.0
March-2015	45.7	45.7	57.3	65.6	51.2	33.2	14.7	48.5	5.6	5.6
April-2015	29.0	29.0	39.7	45.3	35.6	40.4	29.5	48.6	5.6	5.6
May-2015	23.5	23.5	37.4	41.2	34.5	43.0	33.3	50.2	5.6	5.6
June-2015	30.8	30.8	41.3	40.8	41.7	50.8	38.6	60.0	5.6	5.6
July-2015	8.5	8.5	33.7	36.0	31.9	37.4	18.9	52.4	5.6	5.6
August-2015	0.0	0.0	9.0	-8.2	24.2	37.3	18.3	52.8	5.6	5.6
September-2015	0.2	0.2	4.2	-11.9	18.3	34.8	12.9	53.2	5.6	5.6
October-2015	4.8	4.8	3.9	-11.9	17.9	28.5	26.8	29.0	5.6	5.6
November-2015	4.8	4.8	3.3	-11.9	16.6	27.5	26.8	27.3	5.6	5.6
December-2015	6.1	6.1	-4.3	-18.9	8.5	20.1	10.6	27.3	5.6	5.6
January-2016	4.8	4.8	-2.3	-15.0	8.7	19.5	8.0	28.3	5.6	5.6
February-2016	p 7.9	p 7.9	-p 3.2	-p 17.4	p 9.2	p 19.5	p 8.0	p 28.2	p 5.6	p 5.6

p: provisional

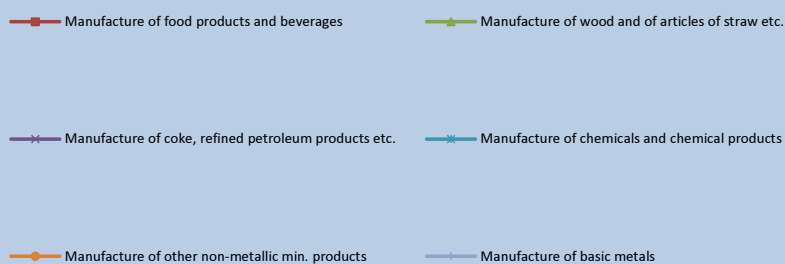
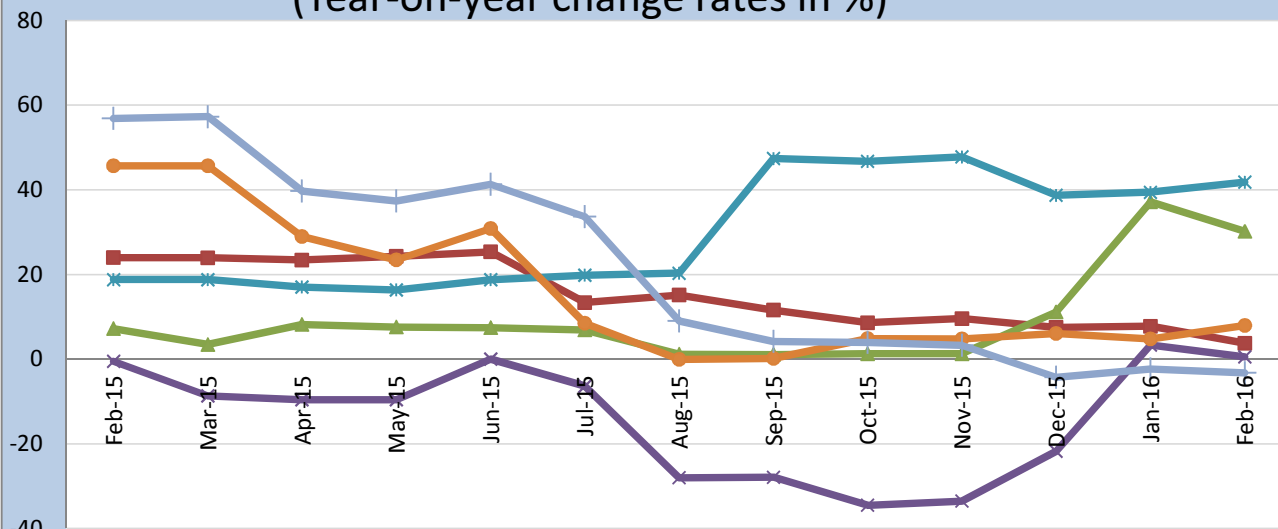
Table 9: Manufacturing: Yearly Change Rates for February 2015 - February 2016 (%)

contd.

Year / Month	Manufacture of electrical machinery and apparatus n.e.c.	Manufacture of insulated wire and cable	Manufacture of motor vehicles, trailers and semi-trailers	Manufacture of bodies for motor vehicles, trailers and semi-trailers	Manufacture of furniture; manufacturing n.e.c.	Manufacture of furniture	Manufacturing n.e.c.
<i>ISIC</i>	D31	<i>D313</i>	D34	<i>D342</i>	D36	<i>D361</i>	<i>D369</i>
<i>weight</i>	0.41	<i>0.41</i>	0.05	<i>0.05</i>	2.44	<i>2.33</i>	<i>0.11</i>
February-2015	33.3	33.3	13.8	13.8	29.7	30.1	16.3
March-2015	35.1	35.1	9.4	9.4	36.7	37.4	16.3
April-2015	35.2	35.2	15.5	15.5	35.4	36.1	16.3
May-2015	35.2	35.2	10.7	10.7	33.2	33.7	16.3
June-2015	36.3	36.3	17.3	17.3	33.7	34.7	4.0
July-2015	44.4	44.4	-8.3	-8.3	23.8	24.6	1.0
August-2015	44.5	44.5	-5.4	-5.4	19.0	19.6	1.0
September-2015	44.4	44.4	-8.3	-8.3	20.5	21.1	1.8
October-2015	44.4	44.4	-0.2	-0.2	21.3	21.3	21.3
November-2015	24.7	24.7	-0.5	-0.5	21.8	21.8	21.3
December-2015	24.7	24.7	1.7	1.7	13.3	13.1	21.3
January-2016	8.6	8.6	9.9	9.9	13.3	13.1	21.3
February-2016	p 8.6	p 8.6	p 12.4	p 12.4	p 16.7	p 16.5	p 21.3

p: provisional

PPI Inflation for selected subgroups in the Manufacturing Sector (Year-on-year change rates in %)



Ghana Statistical Service (GSS)

Table 10: Manufacturing: Monthly Change Rates for February 2015 - February 2016 (%)

Year / Month	Manufacturing	Manufacture of food products and beverages	Production, processing, preservation of meat, fish, fruit, vegetables, oils and fats	Manufacture of dairy products	Manufacture of grain mill products, starch products, and prepared animal feeds	Manufacture of other food products	Manufacture of beverages	Manufacture of textiles	Spinning, weaving and finishing of textiles
<i>ISIC</i>	<i>D</i>	<i>D15</i>	<i>D151</i>	<i>D152</i>	<i>D153</i>	<i>D154</i>	<i>D155</i>	<i>D17</i>	<i>D171</i>
<i>weight</i>	100	25.64	4.60	4.31	4.66	4.80	7.27	4.27	4.28
February-2015	2.3	4.2	0.2	0.0	-1.9	48.6	0.0	0.0	0.0
March-2015	0.6	2.2	9.7	0.0	0.9	0.5	2.1	0.0	0.0
April-2015	1.1	0.7	4.9	0.0	-1.6	2.2	0.0	2.6	2.6
May-2015	0.6	1.5	0.8	0.0	0.0	13.0	0.0	0.0	0.0
June-2015	5.3	1.5	7.0	-0.6	0.0	3.3	0.9	4.7	4.7
July-2015	2.5	-3.5	-14.5	0.0	6.1	-0.5	-7.7	3.3	3.3
August-2015	-5.9	1.7	5.7	0.0	3.0	2.8	0.0	0.0	0.0
September-2015	2.0	-0.9	-6.6	0.0	0.0	1.2	0.0	0.7	0.7
October-2015	-1.4	0.3	1.9	0.0	0.0	0.0	0.0	-0.7	-0.7
November-2015	0.2	0.4	0.2	0.0	0.0	2.1	0.4	0.5	0.5
December-2015	-0.4	-0.4	0.7	0.0	0.0	0.0	-2.0	0.1	0.1
January-2016	5.0	0.2	0.9	0.0	0.0	0.5	0.0	0.0	0.0
February-2016	0.2	p 0.3	p 0.5	p 0.0	p 0.0	p 0.1	p 0.8	p 0.0	p 0.0

p: provisional

Table 10: Manufacturing: Monthly Change Rates for February 2015 - February 2016 (%)

contd.

Year / Month	Tanning of leather; manu facture of luggage, etc	Manufacture of footwear	Manufacture of wood an of articles of straw etc.	Sawmilling and planing of wood	Manufacture of products of wood, cork, straw etc.	Manufacture of paper and paper products	Manufacture of paper and paper products	Publishing, printing and reproduction of rec. media	Publishing	Printing and service activities ...
<i>ISIC</i>	D19	<i>D192</i>	D20	<i>D201</i>	<i>D202</i>	D21	<i>D210</i>	D22	<i>D221</i>	<i>D222</i>
<i>weight</i>	0.12	<i>0.12</i>	9.03	<i>4.94</i>	<i>4.10</i>	0.62	<i>0.62</i>	1.14	<i>0.40</i>	<i>0.74</i>
February-2015	1.3	1.3	5.4	7.7	-1.3	37.0	37.0	0.0	0.0	0.0
March-2015	16.3	16.3	0.4	0.0	1.3	1.5	1.5	0.0	0.0	0.0
April-2015	0.0	0.0	0.4	0.3	0.0	3.5	3.5	27.2	0.0	56.0
May-2015	0.0	0.0	0.0	0.0	0.0	0.2	0.2	0.0	0.0	0.0
June-2015	16.4	16.4	0.3	0.0	0.9	6.3	6.3	0.0	0.0	0.0
July-2015	0.0	0.0	-0.5	-0.2	-0.6	-0.5	-0.5	-5.9	0.0	-15.3
August-2015	0.0	0.0	-5.4	-7.2	0.9	1.3	1.3	1.1	0.0	1.7
September-2015	0.3	0.3	0.2	0.0	0.7	17.1	17.1	-1.6	0.0	-2.4
October-2015	0.0	0.0	6.1	7.7	1.6	-0.1	-0.1	0.1	0.0	0.1
November-2015	0.0	0.0	0.0	0.0	0.0	0.0	0.0	0.0	0.0	0.0
December-2015	0.0	0.0	3.7	4.6	1.2	-33.8	-33.8	0.0	0.0	0.0
January-2016	0.0	0.0	24.1	30.0	8.7	58.4	58.4	0.7	0.0	1.0
February-2016	0.0	0.0	0.1	0.0	0.3	3.1	3.1	0.0	0.0	0.0

p: provisional

Table 10: Manufacturing: Monthly Change Rates for February 2015 - February 2016 (%)

contd.

Year / Month	Manufacture of coke, refined petroleum products etc.	Manufacture of refined petroleum products	Manufacture of chemicals and chemical products	Manufacture of basic chemicals	Manufacture of other chemical products	Manufacture of man-made fibres	Manufacture of rubber and plastics products	Manufacture of rubber products	Manufacture of plastics products
<i>ISIC</i>	D23	<i>D232</i>	D24	<i>D241</i>	<i>D242</i>	<i>D243</i>	D25	<i>D251</i>	<i>D252</i>
<i>weight</i>	22.94	<i>22.94</i>	10.15	<i>0.54</i>	<i>9.45</i>	<i>0.16</i>	3.90	<i>0.76</i>	<i>3.14</i>
February-2015	0.4	0.4	-0.2	-16.3	0.0	0.0	7.1	-2.3	9.3
March-2015	-2.3	-2.3	0.0	0.0	0.0	0.0	4.5	1.2	5.2
April-2015	0.4	0.4	5.7	0.0	6.0	0.0	0.4	1.0	0.3
May-2015	0.5	0.5	-0.1	0.0	-0.2	0.0	2.7	11.5	1.0
June-2015	10.8	10.8	4.7	0.0	4.8	0.0	9.5	8.0	9.8
July-2015	16.4	16.4	0.9	0.0	0.9	0.0	-4.1	-0.1	-4.9
August-2015	-23.0	-23.0	0.4	0.0	0.4	0.0	0.6	1.5	0.4
September-2015	1.2	1.2	22.5	0.0	23.3	0.0	-1.0	-0.3	-1.1
October-2015	-9.4	-9.4	0.0	0.0	0.0	0.0	2.7	9.6	0.0
November-2015	-0.1	-0.1	1.1	0.0	1.1	0.0	0.0	0.2	0.0
December-2015	-0.2	-0.2	0.8	0.0	0.8	0.0	-0.5	-3.3	0.0
January-2016	15.0	15.0	0.0	0.0	0.0	0.0	0.5	3.6	0.0
February-2016	-2.3	-2.3	1.5	0.0	1.5	0.0	1.9	0.0	2.2

p: provisional

Table 10: Manufacturing: Monthly Change Rates for February 2015 - February 2016 (%)
contd.

Year / Month	Manufacture of other non-metallic min. products	Manufacture of non-metallic mineral products n.e.c.	Manufacture of basic metals	Manufacture of basic iron and steel	Manufacture of basic precious and non-ferrous metals	Manufacture of fabricated metal products, ...	Manufacture of structural metal products, tanks, reservoirs ...	Manufacture of other fabricated metal products ...	Manufacture of machinery ... n.e.c.	Manufacture of special-purpose machinery
<i>ISIC</i>	<i>D26</i>	<i>D269</i>	<i>D27</i>	<i>D271</i>	<i>D272</i>	<i>D28</i>	<i>D281</i>	<i>D289</i>	<i>D29</i>	<i>D292</i>
<i>weight</i>	8.20	8.20	5.02	2.02	2.65	3.70	1.55	2.15	0.42	0.42
February-2015	0.4	0.4	1.7	2.9	0.9	0.0	0.0	0.0	0.0	0.0
March-2015	0.2	0.2	1.5	0.4	2.4	-0.1	0.0	-0.2	5.6	5.6
April-2015	-2.8	-2.8	-3.1	-9.6	2.1	8.4	13.0	5.0	0.0	0.0
May-2015	0.0	0.0	0.5	0.1	0.8	2.2	3.5	1.4	0.0	0.0
June-2015	6.5	6.5	3.5	-0.3	6.5	5.8	4.0	7.1	0.0	0.0
July-2015	1.6	1.6	-2.4	-3.4	-1.6	-5.4	-11.9	-0.1	0.0	0.0
August-2015	0.0	0.0	2.1	0.5	3.3	0.1	0.0	0.2	0.0	0.0
September-2015	-0.7	-0.7	-2.0	-0.1	-3.4	0.5	0.6	0.4	0.0	0.0
October-2015	0.1	0.1	-0.1	0.0	-0.2	12.6	14.3	10.7	0.0	0.0
November-2015	0.0	0.0	-0.6	0.0	-1.1	0.0	0.0	0.0	0.0	0.0
December-2015	0.7	0.7	-5.1	-10.2	-1.0	-5.5	-12.2	0.0	0.0	0.0
January-2016	-1.1	-1.1	2.1	4.7	0.1	0.8	0.0	1.3	0.0	0.0
February-2016	3.4	3.4	0.7	0.0	1.3	0.0	0.0	0.0	0.0	0.0

p: provisional

Table 10: Manufacturing: Monthly Change Rates for February 2015 - February 2016 (%)

contd.

Year / Month	Manufacture of electrical machinery and apparatus n.e.c.	Manufacture of insulated wire and cable	Manufacture of motor vehicles, trailers and semi-trailers	Manufacture of bodies for motor vehicles, trailers and semi-trailers	Manufacture of furniture; manufacturing n.e.c.	Manufacture of furniture	Manufacturing n.e.c.
<i>ISIC</i>	D31	<i>D313</i>	D34	<i>D342</i>	D36	<i>D361</i>	<i>D369</i>
<i>weight</i>	0.41	<i>0.41</i>	0.05	<i>0.05</i>	2.44	<i>2.33</i>	<i>0.11</i>
February-2015	0.1	0.1	1.7	1.7	-2.9	-3.0	0.0
March-2015	1.4	1.4	2.0	2.0	6.2	6.4	0.0
April-2015	0.1	0.1	5.6	5.6	0.0	0.0	0.0
May-2015	0.0	0.0	5.9	5.9	0.7	0.8	0.0
June-2015	0.9	0.9	8.1	8.1	5.2	5.4	0.0
July-2015	5.9	5.9	-21.8	-21.8	-0.6	-0.6	0.0
August-2015	0.0	0.0	4.9	4.9	0.6	0.6	0.0
September-2015	0.0	0.0	-2.0	-2.0	2.8	2.8	1.2
October-2015	0.0	0.0	7.0	7.0	0.7	0.2	19.9
November-2015	0.0	0.0	0.6	0.6	0.3	0.3	0.0
December-2015	0.0	0.0	1.2	1.2	-0.3	-0.3	0.0
January-2016	0.0	0.0	0.0	0.0	0.1	0.1	0.0
February-2016	0.0	0.0	4.1	4.1	0.0	0.0	0.0

p: provisional

Table 11: Utilities: Producer Price Index (Sept 2006=100) for February 2015 - February 2016

Year / Month	Electricity and water supply (Utilities)	Electricity supply	Production, transmission and distribution of electricity	Water supply	Collection, purification and distribution of water
<i>ISIC</i>	<i>E</i>	<i>E40</i>	<i>E401</i>	<i>E41</i>	<i>E410</i>
<i>weight</i>	100.00	93.25	93.25	6.75	6.75
February-2015	546.3	557.4	557.4	410.9	410.9
March-2015	548.1	559.4	559.4	410.9	410.9
April-2015	573.1	584.4	584.4	434.0	434.0
May-2015	573.7	585.0	585.0	434.0	434.0
June-2015	575.7	587.3	587.3	434.0	434.0
July-2015	576.1	582.0	582.0	499.1	499.1
August-2015	578.7	584.8	584.8	499.1	499.1
September-2015	573.4	579.1	579.1	499.1	499.1
October-2015	573.4	579.1	579.1	499.1	499.1
November-2015	573.5	579.1	579.1	499.1	499.1
December-2015	853.6	854.9	854.9	834.4	834.4
January-2016	853.7	855.1	855.1	834.4	834.4
February-2016	p 786.3	p 783.0	p 783.0	p 834.4	p 834.4

p: provisional

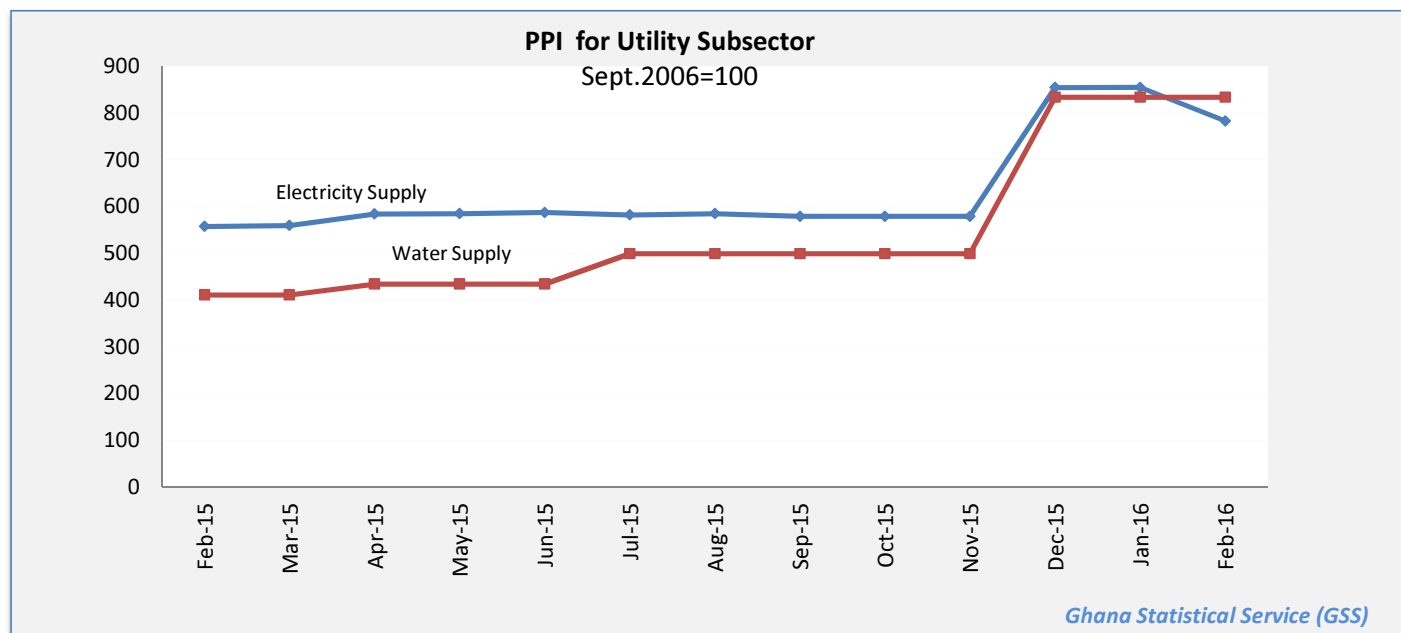


Table 12: Utilities: Yearly Change Rates for February 2015 - February 2016 (%)

Year / Month	Electricity and water supply (Utilities)	Electricity supply	Production, transmission and distribution of electricity	Water supply	Collection, purification and distribution of water
ISIC	E	E40	E401	E41	E410
weight	100.00	93.25	93.25	6.75	6.75
February-2015	15.7	16.4	16.4	6.1	14.1
March-2015	15.8	16.5	16.5	6.1	6.1
April-2015	20.7	21.3	21.3	12.0	12.0
May-2015	20.6	21.2	21.2	12.0	12.0
June-2015	20.8	21.5	21.5	12.0	12.0
July-2015	7.3	6.4	6.4	21.4	21.4
August-2015	8.4	7.5	7.5	21.4	21.4
September-2015	7.2	6.2	6.2	21.4	21.4
October-2015	5.3	4.2	4.2	21.4	21.4
November-2015	5.3	4.3	4.3	21.4	21.4
December-2015	56.6	53.8	53.8	103.0	103.0
January-2016	56.6	53.8	53.8	103.0	103.0
February-2016	p 43.9	p 40.5	p 40.5	p 103.0	p 103.0

p: provisional

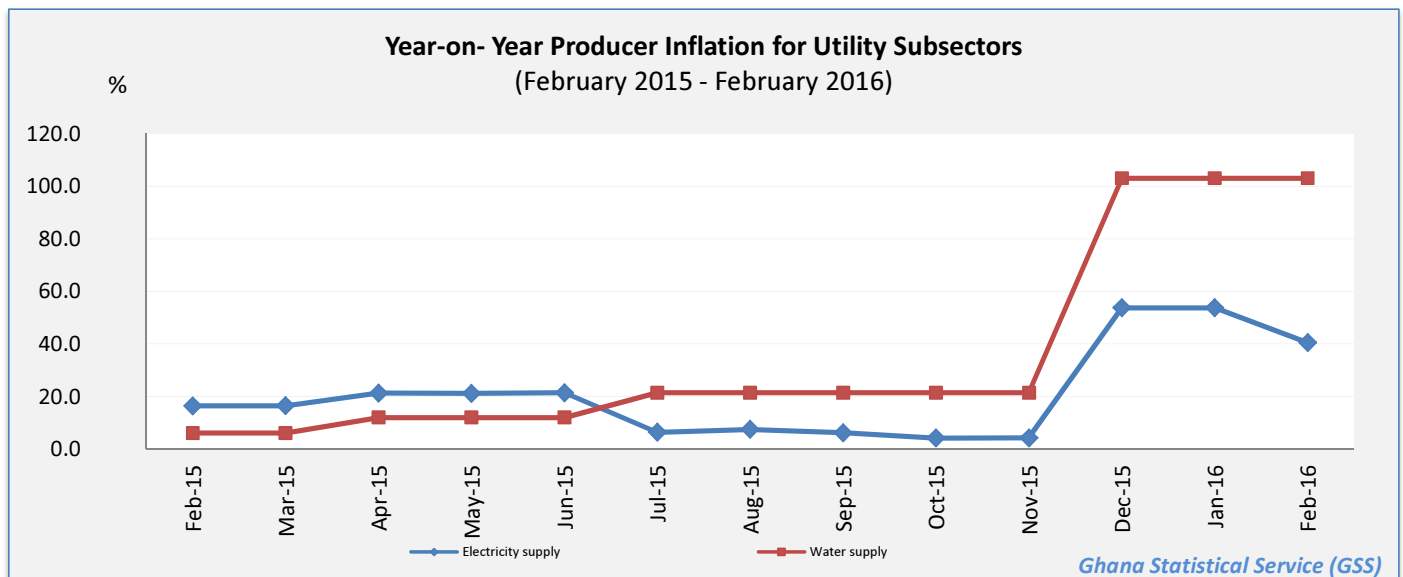


Table 13: Utilities: Monthly Change Rates for February 2015 - February 2016 (%)

Year / Month	Electricity and water supply (Utilities)	Electricity supply	Production, transmission and distribution of electricity	Water supply	Collection, purification and distribution of water
ISIC	E	E40	E401	E41	E410
weight	100.00	93.25	93.25	6.75	6.75
February-2015	0.2	0.2	0.2	0.0	0.0
March-2015	0.3	0.4	0.4	0.0	0.0
April-2015	4.5	4.5	4.5	5.6	5.6
May-2015	0.1	0.1	0.1	0.0	0.0
June-2015	0.4	0.4	0.4	0.0	0.0
July-2015	0.1	-0.9	-0.9	15.0	15.0
August-2015	0.4	0.5	0.5	0.0	0.0
September-2015	-0.9	-1.0	-1.0	0.0	0.0
October-2015	0.0	0.0	0.0	0.0	0.0
November-2015	0.0	0.0	0.0	0.0	0.0
December-2015	48.8	47.6	47.6	67.2	67.2
January-2016	0.0	0.0	0.0	0.0	0.0
February-2016	-p 7.9	-p 8.4	-p 8.4	p 0.0	p 0.0

p: provisional

