



**GHANA STATISTICAL SERVICE (GSS)**  
*Statistics for Development and Progress*

Statistical Bulletin

**(PRODUCER PRICE INDEX PPI)**  
**February, 2017**

Ghana Statistical Service (GSS)

**Statistical Bulletin**

PRODUCER PRICE INDEX (PPI)

**February, 2017**

**Date: March 22, 2017**

**Producer Price Index (PPI)  
February 2017**

CONTENTS

HIGHLIGHTS FOR FEBRUARY 2017	2
Table 1: Producer Price Index for February 2016 - February 2017	4
Table 2: Producer Price Index (Sep.2006=100) by sectors for February 2016 - February 2017	5
Table 3: Producer Price Index: Yearly Change Rates by Sector for February 2016 - February 2017 (%)	6
Table 4: Producer Price Index: Monthly Change Rates by Sector for February 2016 - February 2017 (%)	7
Table 5: Mining And Quarrying: Producer Price Index (Sept 2006=100) February 2016 - February 2017 2017	8
Table 6: Mining and Quarrying: Yearly Change Rates for February 2016 - February 2017 (%)	9
Table 7: Mining and Quarrying: Monthly Change Rates for February 2016 - February 2017 (%)	10
Table 8: Manufacturing Producer Price Index (Sept 2006=100) for February 2016 - February 2017	11
Table 9: Manufacturing: Yearly Change Rates for February 2016 - February 2017 (%)	17
Table 10: Manufacturing: Monthly Change Rates for J February 2016 - February 2017 (%)	23
Table 11: Utilities: Producer Price Index (Sept 2006=100) for February 2016 - February 2017	28
Table 12: Utilities: Yearly Change Rates for February 2016 - February 2017 (%)	29
Table 13: Utilities: Monthly Change Rates for February 2016 - February 2017 (%)	30

## HIGHLIGHTS FOR FEBRUARY 2017

### Producer Price Inflation Rate in February 2017 is 5.4%

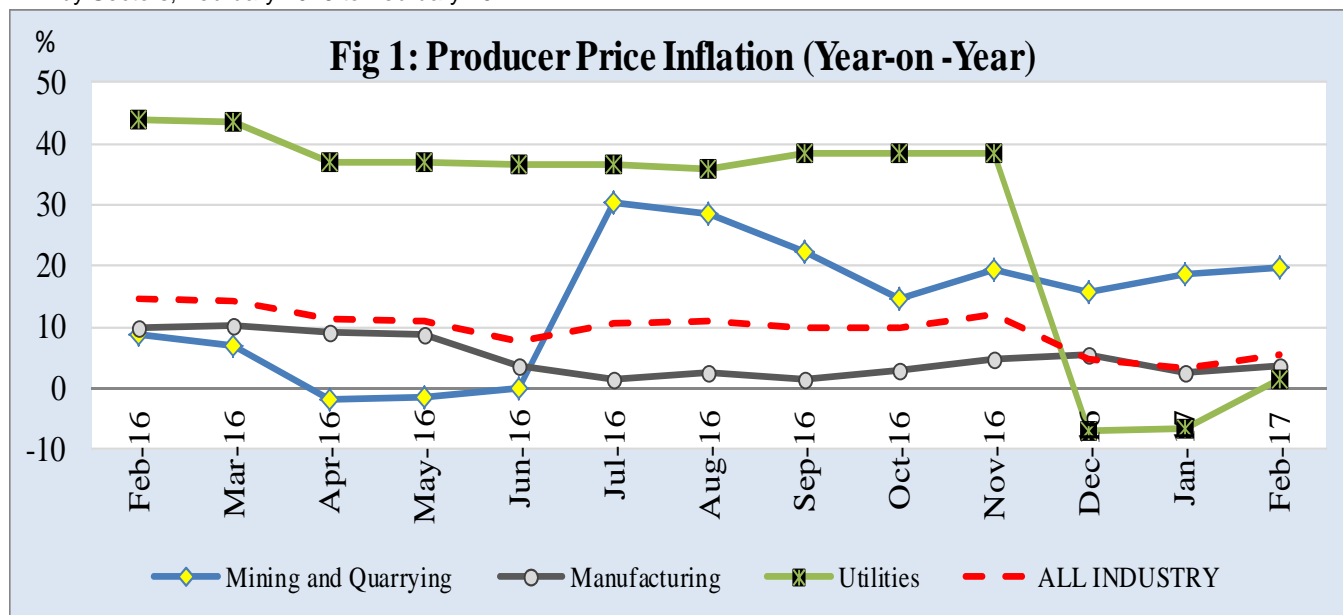
The Producer Price Index (PPI) measures the average change over time in the prices received by domestic producers for the production of their goods and services. The PPI for Ghana reports the producer price indices with reference to September 2006, the base period. This release shows the annual (year-on-year) and monthly producer inflation rates for all industry and three major sub-sectors of industry (Mining and Quarrying, Manufacturing and Utilities) for the last twelve months. The figures for the month of February 2017 are provisional, and are subject to revision when additional data become available. All other indicators are final.

The Producer Price Inflation rate for February 2017 was 5.4 percent. This rate indicates that, between February 2016 and February 2017 (year-on-year), the PPI increased by 5.4 percent. This rate represents a 2.3 percentage point decrease in producer inflation relative to the rate recorded in January 2017 (3.1%). The month-on-month change in producer price index between January 2017 and February 2017 was 2.2 percent

The producer price inflation in the Mining and Quarrying sub-sector increased by 1.1 percentage points over the January 2017 rate of 18.6 percent to record 19.7 percent in February 2017. The producer inflation for Manufacturing, which constitutes more than two-thirds of total industry, increased by 1.1 percentage points to record 3.5 percent. The Utilities sub-sector recorded an inflation rate of 1.3 percent in February 2017 indicating an increase of 8.1 percentage point over the January 2017 rate.

During the month of February 2017, eleven out of the sixteen major groups in the manufacturing sub-sector recorded inflation rates higher than the sector average of 3.5 percent. Tanning and dressing of leather recorded the highest inflation rate of 39.0 percent while manufacturing of other non-metallic mineral products recorded the lowest producer price inflation rate of -2.2%

**PPI** by Sectors; February 2016 to February 2017



**Manufacture of coke, refined petroleum products etc:** Annual rate was 0.4 percent for February 2017, as compare to -6.8 percent in January 2017.

**Manufacture of other non-metallic mineral product:** Annual rate was 2.8 percent for January 2017, as compared to -2.2 percent in February 2017.

**Manufacture of motor vehicles, trailers and semi-trailers:** Annual rate was 8.4 percent in February 2017 as compared to 9.2 percent last month.

**Electricity and Water Supply:** Annual rate is 1.3percent in February 2017 as compared to -6.8 percent in January 2017

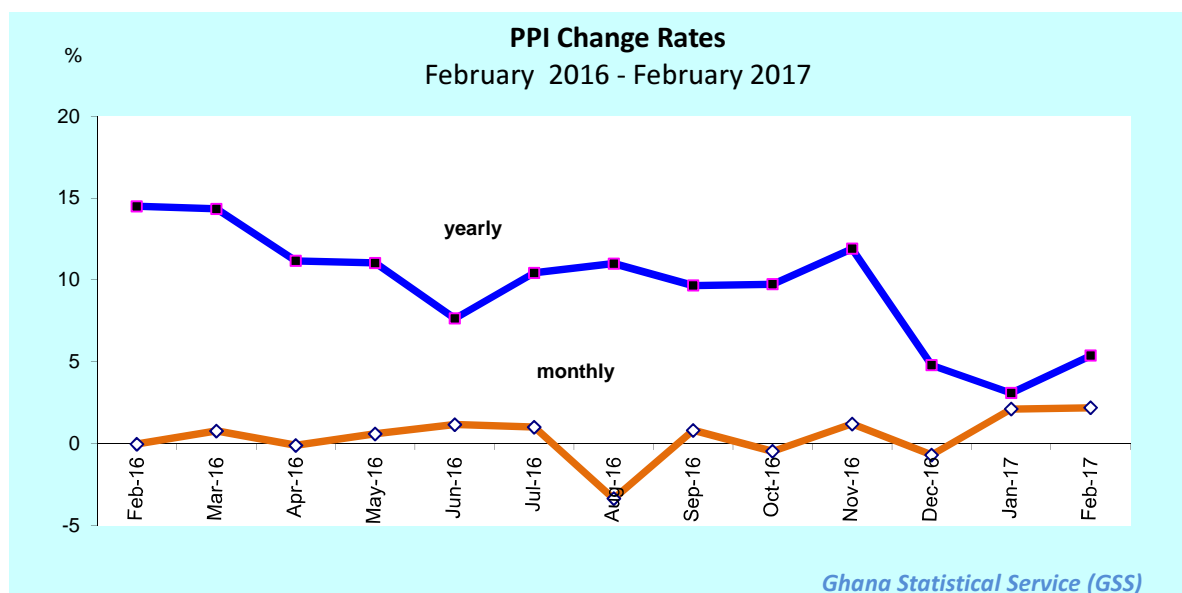
More detailed time series data is posted on the GSS website [[www.statsghana.gov.gh](http://www.statsghana.gov.gh)].

**The next release date is 26th April, 2017**

**Table 1: Producer Price Index for February 2016 - February 2017**

Year / Month	Index level	Monthly	Yearly
	Sept 2006=100	Change Rate (%)	
February-16	523.0	-0.0	14.5
March-16	527.2	0.8	14.3
April-16	526.7	-0.1	11.2
May-16	529.9	0.6	11.0
June-16	536.1	1.2	7.6
July-16	541.5	1.0	10.4
August-16	523.4	-3.3	11.0
September-16	527.8	0.8	9.7
October-16	525.3	-0.5	9.7
November-16	531.7	1.2	11.9
December-16	528.1	-0.7	4.8
January-17	539.3	2.1	3.1
February-17	p 551.2	p 2.2	p 5.4

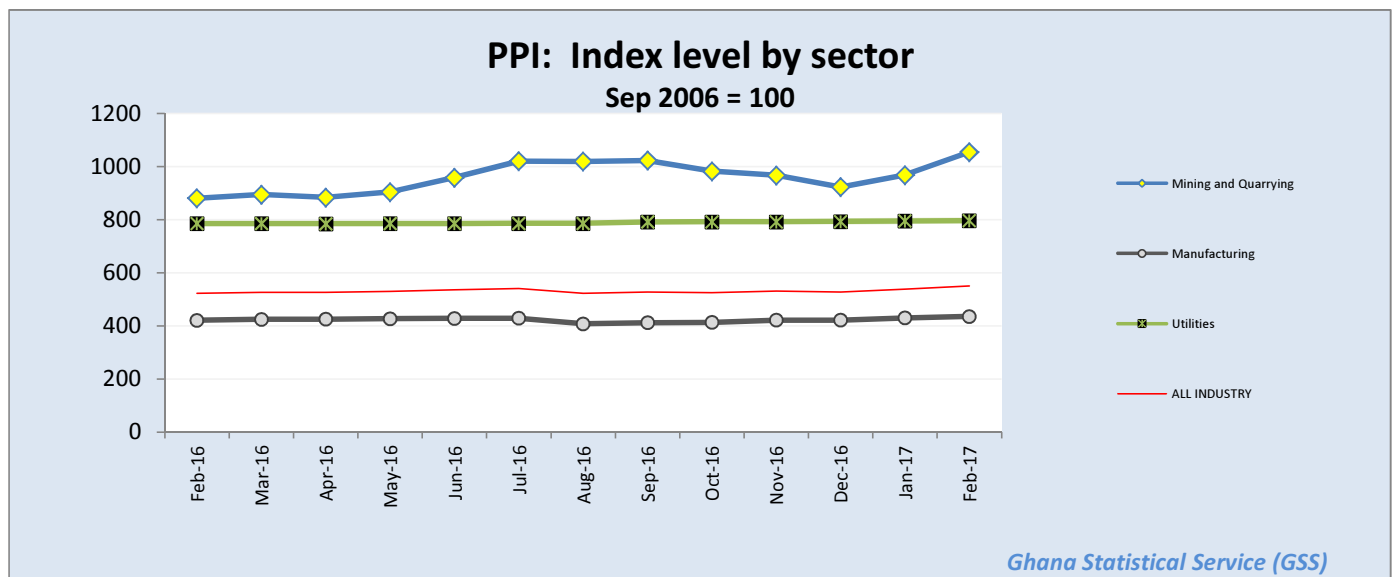
p: provisional



**Table 2: Producer Price Index (Sep.2006=100) by sectors for February 2016 - February 2017**

Year / Month	Mining and Quarrying	Manufacturing	Utilities	ALL INDUSTRY
ISIC	C	D	E	C+D+E
February-2016	881.1	421.7	786.3	523.0
March-2016	895.4	425.1	785.9	527.2
April-2016	884.1	425.9	785.5	526.7
May-2016	905.0	427.5	786.0	529.9
June-2016	959.0	429.2	786.2	536.1
July-2016	1,020.8	429.4	786.7	541.5
August-2016	1,019.8	408.7	786.8	523.4
September-2016	1,023.4	412.8	792.5	527.8
October-2016	983.2	413.6	792.6	525.3
November-2016	967.2	422.1	793.0	p 531.7
December-2016	923.5	422.5	794.2	528.1
January-2017	968.8	430.9	795.6	539.3
February-2017	p 1,054.9	p 436.3	p 796.8	p 551.2

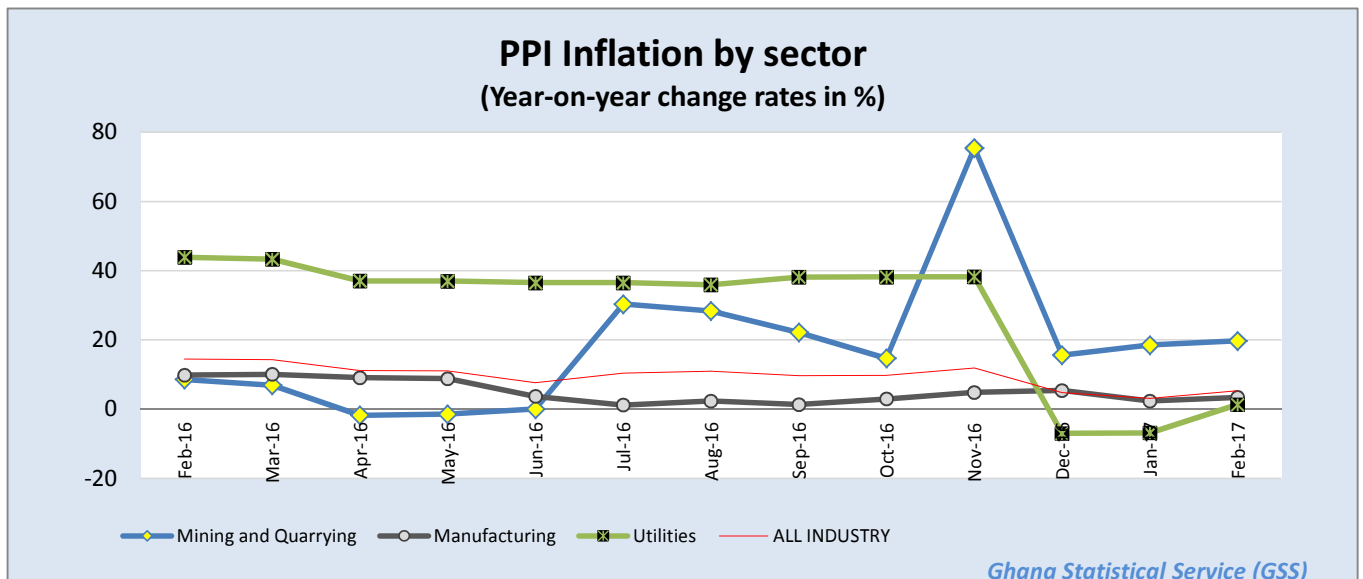
p: provisional



**Table 3: Producer Price Index: Yearly Change Rates by Sector for February 2016 - February 2017 (%)**

Year / Month	Mining and Quarrying	Manufacturing	Utilities	ALL INDUSTRY
	<i>ISIC C</i>	<i>D</i>	<i>E</i>	<i>C+D+E</i>
February-2016	8.6	9.8	43.9	14.5
March-2016	6.9	10.1	43.4	14.3
April-2016	-1.8	9.1	37.1	11.2
May-2016	-1.4	8.8	37.0	11.0
June-2016	0.1	3.7	36.5	7.6
July-2016	30.4	1.2	36.6	10.4
August-2016	28.4	2.4	36.0	11.0
September-2016	22.2	1.4	38.2	9.7
October-2016	14.7	3.0	38.2	9.7
November-2016	75.5	4.9	38.3	11.9
December-2016	15.6	5.4	-7.0	4.8
January-2017	18.6	2.4	-6.8	3.1
February-2017	p 19.7	p 3.5	p 1.3	p 5.4

*p: provisional*

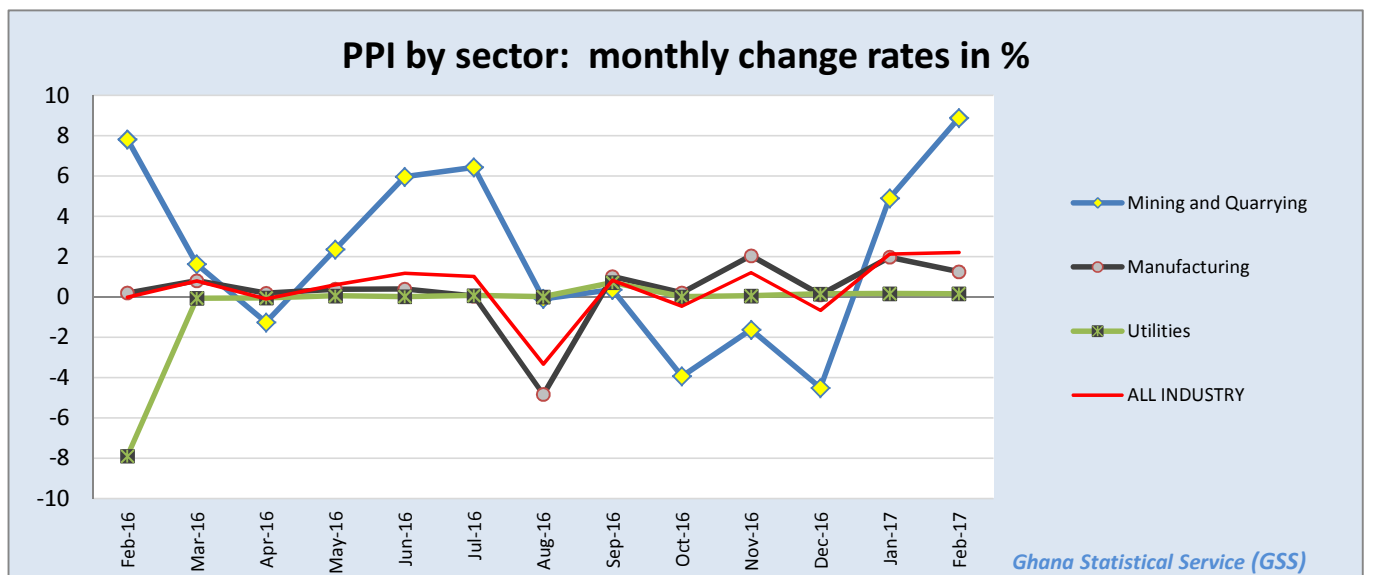




**Table 4: Producer Price Index: Monthly Change Rates by Sector for February 2016 - February 2017 (%)**

Year / Month	Mining and Quarrying	Manufacturing	Utilities	ALL INDUSTRY
<i>ISIC</i>	<i>C</i>	<i>D</i>	<i>E</i>	<i>C+D+E</i>
<i>weight</i>	13.97	69.75	16.28	100.00
February-2016	7.8	0.2	-7.9	-0.0
March-2016	1.6	0.8	-0.1	0.8
April-2016	-1.3	0.2	-0.0	-0.1
May-2016	2.4	0.4	0.1	0.6
June-2016	6.0	0.4	0.0	1.2
July-2016	6.4	0.0	0.1	1.0
August-2016	-0.1	-4.8	0.0	-3.3
September-2016	0.4	1.0	0.7	0.8
October-2016	-3.9	0.2	0.0	-0.5
November-2016	-1.6	2.0	0.1	1.2
December-2016	-4.5	0.1	0.2	-0.7
January-2017	4.9	2.0	0.2	2.1
February-2017	p 8.9	p 1.3	p 0.2	p 2.2

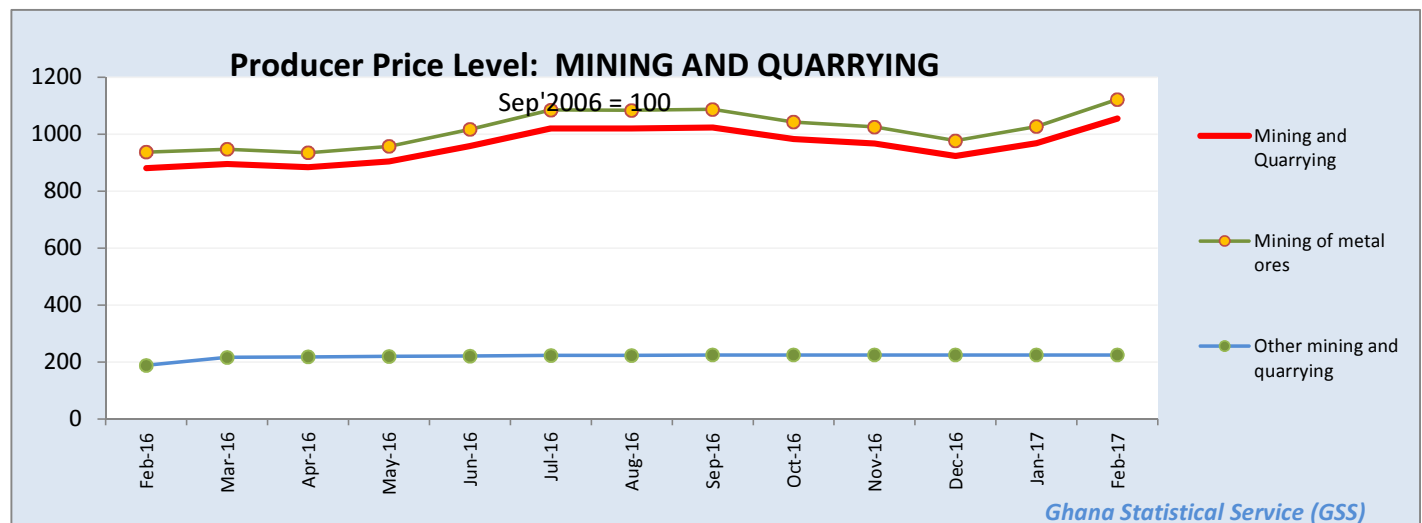
*p: provisional*



**Table 5: Mining And Quarrying: Producer Price Index (Sept 2006=100) February 2016 - February 2017 2017**

Year / Month	Mining and Quarrying	Mining of metal ores	Mining of non-ferrous metal ores	Other mining and quarrying	Quarrying of stone, sand & clay	Mining and quarrying n.e.c.
<i>ISIC</i>	<i>C</i>	<i>C13</i>	<i>C132</i>	<i>C14</i>	<i>C141</i>	<i>C142</i>
<i>weight</i>	<b>100.00</b>	<b>95.01</b>	<b>95.01</b>	<b>4.99</b>	<b>3.42</b>	<b>0.87</b>
February-2016	881.1	937.3	937.3	188.7	150.3	460.6
March-2016	895.4	947.8	947.8	216.8	178.9	460.6
April-2016	884.1	935.2	935.2	218.1	178.9	474.3
May-2016	905.0	957.9	957.9	220.0	180.9	474.3
June-2016	959.0	1017.2	1017.2	221.1	182.0	474.3
July-2016	1020.8	1085.1	1085.1	223.1	184.1	474.3
August-2016	1019.8	1084.0	1084.0	223.1	184.1	474.3
September-2016	1023.4	1087.6	1087.6	225.0	184.1	494.9
October-2016	983.2	1043.2	1043.2	225.0	184.1	494.9
November-2016	967.2	1025.5	1025.5	225.0	184.1	494.9
December-2016	923.5	977.4	977.4	225.0	184.1	494.9
January-2017	968.8	1027.3	1027.3	225.0	184.1	494.9
February-2017	p 1054.9	p 1122.4	p 1122.4	p 225.0	p 184.1	p 494.9

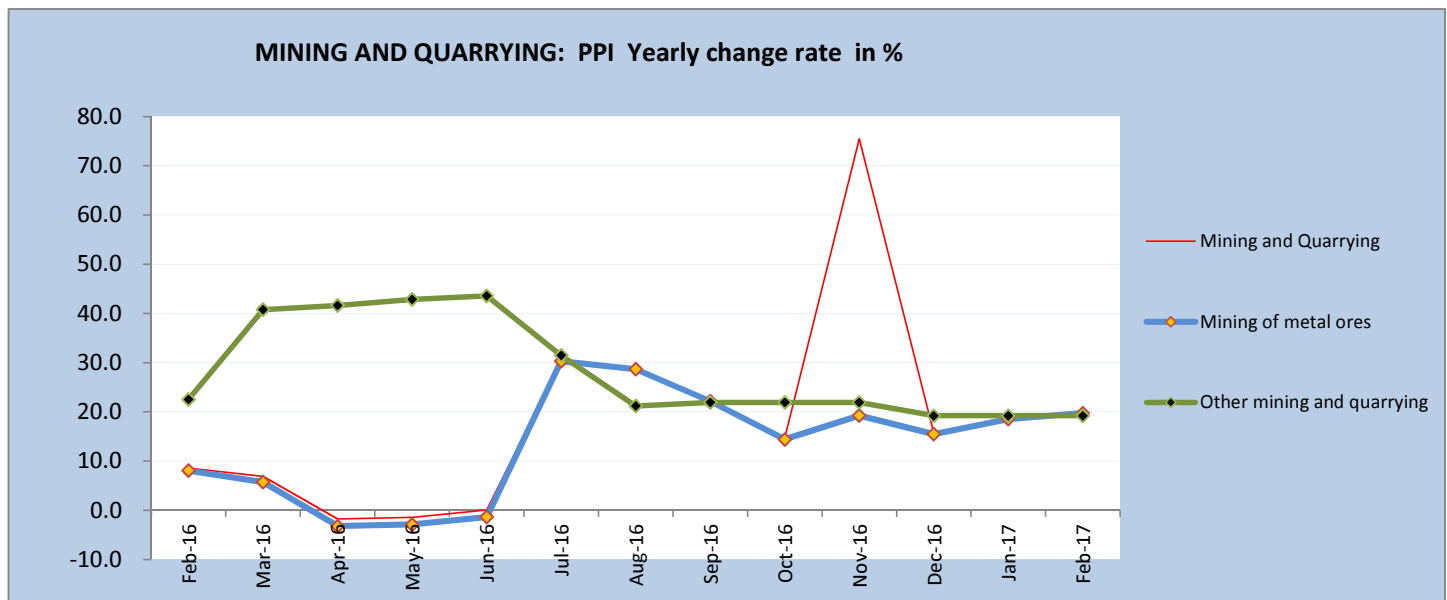
*p: provisional*



**Table 6: Mining and Quarrying: Yearly Change Rates for February 2016 - February 2017 (%)**

Year / Month	Mining and Quarrying	Mining of metal ores	Mining of non-ferrous metal ores	Other mining and quarrying	Quarrying of stone, sand & clay	Mining and quarrying n.e.c.
ISIC	C	C13	C132	C14	C141	C142
February-2016	8.6	8.1	8.1	22.5	1.3	158.3
March-2016	6.9	5.7	5.7	40.8	20.6	158.3
April-2016	-1.8	-3.2	-3.2	41.6	20.6	166.0
May-2016	-1.4	-2.9	-2.9	42.9	21.9	166.0
June-2016	0.1	-1.4	-1.4	43.6	22.7	166.0
July-2016	30.4	30.3	30.3	31.5	22.9	71.7
August-2016	28.4	28.7	28.7	21.2	22.9	15.0
September-2016	22.2	22.2	22.2	21.9	22.4	20.0
October-2016	14.7	14.4	14.4	21.9	22.4	20.0
November-2016	75.5	19.3	19.3	21.9	22.4	20.0
December-2016	15.6	15.5	15.5	19.2	22.4	7.4
January-2017	18.6	18.5	18.5	19.2	22.4	7.4
February-2017	p 19.7	p 19.8	p 19.8	p 19.2	p 22.4	p 7.4

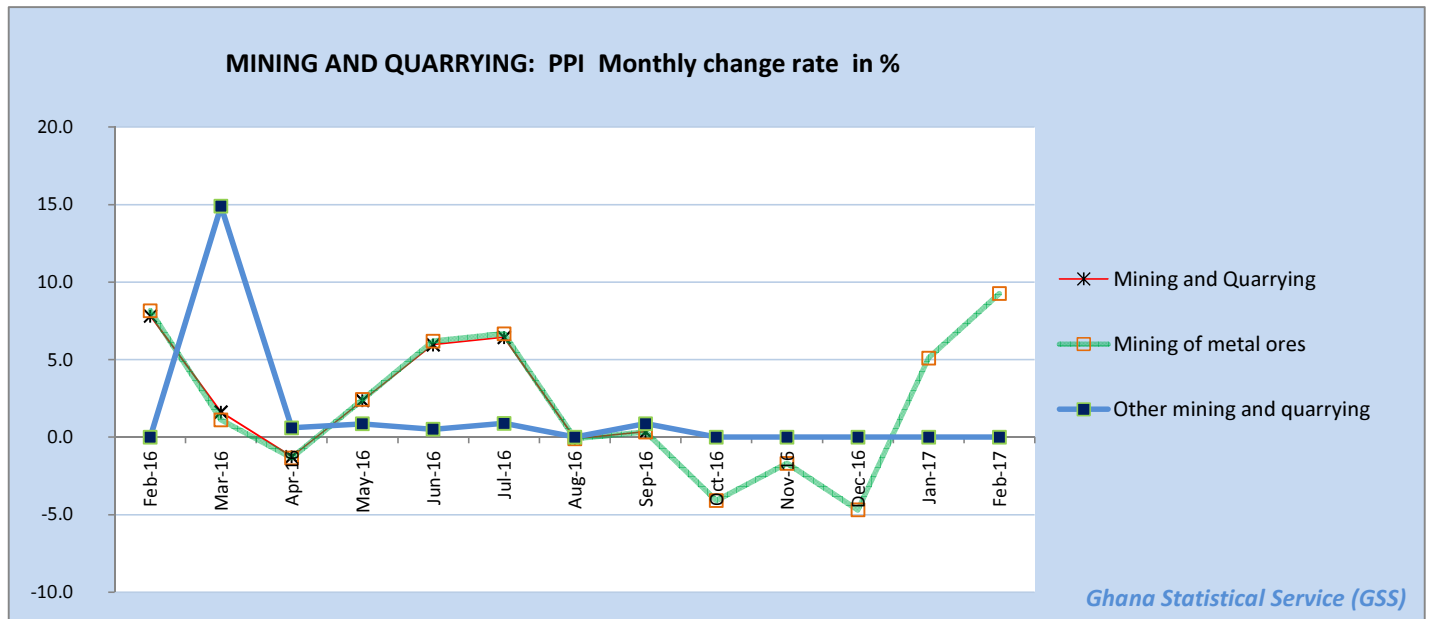
*p: provisional*



**Table 7: Mining and Quarrying: Monthly Change Rates for February 2016 - February 2017 (%)**

Year / Month	Mining and Quarrying	Mining of metal ores	Mining of non-ferrous metal ores	Other mining and quarrying	Quarrying of stone, sand & clay	Mining and quarrying n.e.c.
ISIC	C	C13	C132	C14	C141	C142
February-2016	7.8	8.2	8.2	0.0	0.0	0.0
March-2016	1.6	1.1	1.1	14.9	19.0	0.0
April-2016	-1.3	-1.3	-1.3	0.6	0.0	3.0
May-2016	2.4	2.4	2.4	0.9	1.1	0.0
June-2016	6.0	6.2	6.2	0.5	0.6	0.0
July-2016	6.4	6.7	6.7	0.9	1.1	0.0
August-2016	-0.1	-0.1	-0.1	0.0	0.0	0.0
September-2016	0.4	0.3	0.3	0.9	0.0	4.3
October-2016	-3.9	-4.1	-4.1	0.0	0.0	0.0
November-2016	-1.6	-1.7	-1.7	0.0	0.0	0.0
December-2016	-4.5	-4.7	-4.7	0.0	0.0	0.0
January-2017	4.9	5.1	5.1	0.0	0.0	0.0
February-2017	p 8.9	p 9.3	p 9.3	p 0.0	p 0.0	p 0.0

p: provisional



**Table 8: Manufacturing Producer Price Index (Sept 2006=100) for February 2016 - February 2017**

Year / Month	<b>Manufacturing</b>	<b>Manufacture of food products and beverages</b>	Production, processing, preservation of meat, fish, fruit, vegetables, oils and fats	Manufacture of dairy products	Manufacture of grain mill products, starch products, and prepared animal feeds	Manufacture of other food products	Manufacture of beverages	<b>Manufacture of textiles</b>	Spinning, weaving and finishing of textiles
<i>ISIC</i>	<b>D</b>	<b>D15</b>	<i>D151</i>	<i>D152</i>	<i>D153</i>	<i>D154</i>	<i>D155</i>	<b>D17</b>	<i>D171</i>
<i>weight</i>	<b>100</b>	<b>25.64</b>	4.60	4.31	4.66	4.80	7.27	<b>4.27</b>	4.28
February-2016	421.7	438.6	615.9	352.0	565.1	468.6	380.0	484.6	484.6
March-2016	425.1	440.9	632.6	352.0	565.1	473.7	380.0	498.7	498.7
April-2016	425.9	434.3	583.9	352.0	547.5	476.2	382.8	499.1	499.1
May-2016	427.5	439.2	586.2	352.0	548.9	521.3	382.8	511.4	511.4
June-2016	429.2	439.5	586.0	352.0	548.9	525.5	382.8	511.8	511.8
July-2016	429.4	440.4	596.3	352.0	548.9	522.5	382.8	511.7	511.7
August-2016	408.7	438.9	584.2	352.0	548.9	520.4	382.8	512.2	512.2
September-2016	412.8	442.1	609.1	352.0	548.9	525.1	382.8	512.2	512.2
October-2016	413.6	441.8	606.1	352.0	548.9	525.3	382.8	511.9	511.9
November-2016	422.1	442.6	609.6	352.0	548.9	525.3	383.4	521.4	521.4
December-2016	422.5	445.0	632.3	352.0	547.2	527.1	383.4	521.6	521.6
January-2017	430.9	449.1	645.4	352.0	547.2	540.1	388.2	522.1	522.1
February-2017	p 436.3	p 449.4	p 683.8	p 352.0	p 533.9	p 524.6	p 388.1	p 523.0	p 523.0

*p: provisional*

**Table 8: Manufacturing Producer Price Index (Sept 2006=100) for February 2016 - February 2017**

*contd.*

Year / Month	Tanning of leather; manu facture of luggage, etc	Manufacture of footwear	Manufacture of wood an of articles of straw etc.	Sawmilling and planing of wood	Manufacture of products of wood, cork, straw etc.	Manufacture of paper and paper products	Manufacture of paper and paper products	Publishing, printing and reproduction of rec. media	Publishing	Printing and service activities ...
ISIC	D19	D192	D20	D201	D202	D21	D210	D22	D221	D222
weight	0.12	0.12	9.03	4.94	4.10	0.62	0.62	1.14	0.40	0.74
February-2016	379.9	379.9	294.9	301.6	276.8	537.9	537.9	717.4	665.2	747.7
March-2016	440.0	440.0	295.4	301.6	278.5	561.5	561.5	717.4	665.2	747.7
April-2016	437.3	437.3	295.3	301.6	278.3	560.9	560.9	717.1	665.2	747.2
May-2016	442.7	442.7	295.5	301.6	279.0	561.9	561.9	717.1	665.2	747.2
June-2016	528.1	528.1	303.2	311.8	280.1	562.3	562.3	756.5	665.2	811.5
July-2016	528.1	528.1	314.9	327.2	282.4	563.5	563.5	760.1	665.2	817.4
August-2016	528.1	528.1	341.2	364.8	282.4	565.5	565.5	760.1	665.2	817.4
September-2016	528.1	528.1	341.3	364.8	282.7	521.3	521.3	760.1	665.2	817.4
October-2016	528.1	528.1	341.0	364.8	281.7	521.3	521.3	760.1	665.2	817.4
November-2016	531.5	531.5	339.3	364.5	281.4	529.8	529.8	760.1	665.2	817.4
December-2016	528.1	528.1	341.0	364.8	281.5	529.8	529.8	760.1	665.2	817.4
January-2017	528.1	528.1	341.2	364.8	282.2	531.5	531.5	760.1	665.2	817.4
February-2017	p 528.1	p 528.1	p 341.6	p 364.8	p 283.6	p 533.2	p 533.2	p 756.8	p 665.2	p 811.9

*p: provisional*

**Table 8: Manufacturing Producer Price Index (Sept 2006=100) for February 2016 - February 2017**  
*contd.*

Year / Month	Manufacture of coke, refined petroleum products etc.	Manufacture of refined petroleum products	Manufacture of chemicals and chemical products	Manufacture of basic chemicals	Manufacture of other chemical products	Manufacture of man-made fibres	Manufacture of rubber and plastics products	Manufacture of rubber products	Manufacture of plastics products
<i>ISIC</i>	<b>D23</b>	D232	<b>D24</b>	D241	D242	D243	<b>D25</b>	D251	D252
<i>weight</i>	22.94	22.94	<b>10.15</b>	0.54	9.45	0.16	<b>3.90</b>	0.76	3.14
February-2016	370.0	370.0	415.7	357.8	425.9	109.6	419.1	327.6	435.5
March-2016	369.9	369.9	425.0	357.8	434.6	128.8	419.1	328.5	435.4
April-2016	384.6	384.6	421.9	359.1	431.3	128.8	417.9	322.1	435.3
May-2016	384.9	384.9	421.9	358.4	431.3	128.8	397.9	260.4	435.5
June-2016	383.1	383.1	422.5	358.4	431.9	128.8	402.4	268.3	438.7
July-2016	377.9	377.9	422.5	359.9	431.9	128.8	402.7	268.7	439.0
August-2016	301.5	301.5	422.5	362.9	431.9	128.8	399.7	257.2	439.0
September-2016	310.8	310.8	423.1	363.4	432.5	128.8	399.8	257.6	439.1
October-2016	306.1	306.1	448.7	361.0	459.5	128.8	400.5	260.1	439.1
November-2016	329.6	329.6	448.7	361.0	459.5	128.8	412.6	287.1	445.7
December-2016	329.2	329.2	448.7	361.0	459.5	128.8	411.0	280.8	445.7
January-2017	352.9	352.9	449.0	366.3	459.7	128.8	411.9	280.7	446.9
February-2017	p 371.6	p 371.6	p 450.6	p 372.4	p 461.3	p 128.8	p 415.2	p 291.7	p 447.5

*p: provisional*

**Table 8: Manufacturing Producer Price Index (Sept 2006=100) for February 2016 - February 2017**
*contd.*

Year / Month	Manufacture of other non-metallic min. products	Manufacture of non-metallic mineral products n.e.c.	Manufacture of basic metals	Manufacture of basic iron and steel	Manufacture of basic precious and non-ferrous metals	Manufacture of fabricated metal products, ...	Manufacture of structural metal products, tanks, reservoirs ...	Manufacture of other fabricated metal products ...	Manufacture of machinery ... n.e.c.	Manufacture of special-purpose machinery
ISIC	D26	D269	D27	D271	D272	D28	D281	D289	D29	D292
weight	8.20	8.20	5.02	2.02	2.65	3.70	1.55	2.15	0.42	0.42
February-2016	494.0	494.0	361.4	383.4	345.6	613.3	513.3	696.4	714.3	714.3
March-2016	494.7	494.7	361.9	383.5	346.3	615.5	517.5	696.4	714.3	714.3
April-2016	485.8	485.8	362.0	383.4	346.5	615.2	517.5	697.0	844.7	844.7
May-2016	486.4	486.4	363.0	383.7	348.1	641.7	540.3	725.4	844.7	844.7
June-2016	489.2	489.2	363.4	383.8	348.6	650.0	550.1	732.0	844.7	844.7
July-2016	491.1	491.1	364.6	384.1	350.4	650.0	550.1	732.0	844.7	844.7
August-2016	491.0	491.0	359.1	384.3	341.1	652.5	550.1	737.0	844.7	844.7
September-2016	489.4	489.4	367.2	384.3	354.7	651.0	547.8	737.2	844.7	844.7
October-2016	490.1	490.1	367.4	384.4	355.1	651.0	547.8	737.2	844.7	844.7
November-2016	490.1	490.1	367.6	384.4	355.2	651.6	547.8	738.4	844.7	844.7
December-2016	490.1	490.1	370.2	385.0	359.3	651.6	547.8	738.4	844.7	844.7
January-2017	491.0	491.0	373.0	385.7	363.6	651.6	547.8	738.4	844.7	844.7
February-2017	p 483.3	p 483.3	p 382.7	p 403.1	p 367.9	p 654.6	p 552.8	p 738.4	p 844.7	p 844.7

*p: provisional*



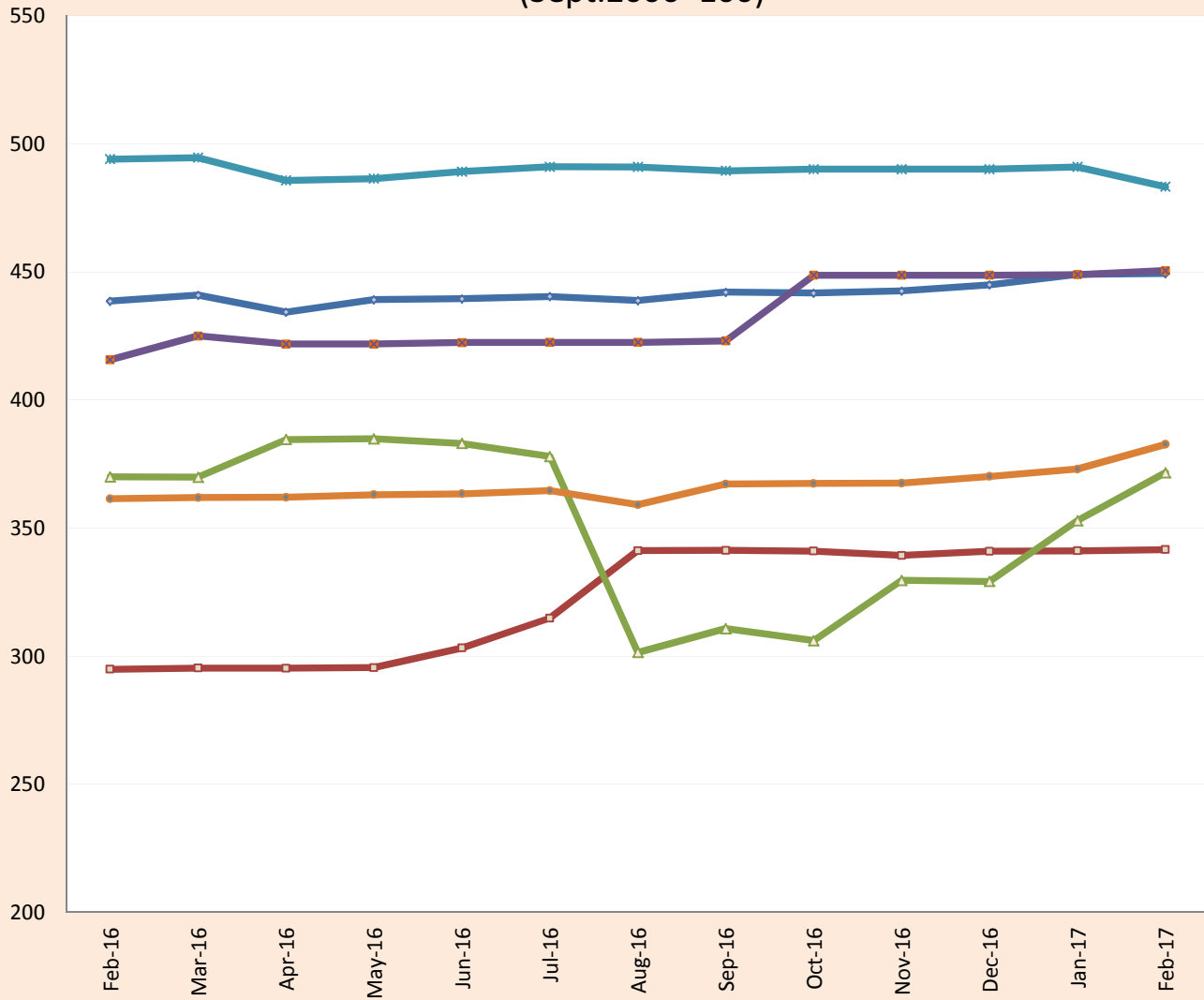
**Table 8: Manufacturing Producer Price Index (Sept 2006=100) for February 2016 - February 2017**

*contd.*

Year / Month	Manufacture of electrical machinery and apparatus n.e.c.	Manufacture of insulated wire and cable	Manufacture of motor vehicles, trailers and semi-trailers	Manufacture of bodies for motor vehicles, trailers and semi-trailers	Manufacture of furniture; manufacturing n.e.c.	Manufacture of furniture	Manufacturing n.e.c.
<i>ISIC</i>	<b>D31</b>	<i>D313</i>	<b>D34</b>	<i>D342</i>	<b>D36</b>	<i>D361</i>	<i>D369</i>
<i>weight</i>	<b>0.41</b>	<i>0.41</i>	<b>0.05</b>	<i>0.05</i>	<b>2.44</b>	<i>2.33</i>	<i>0.11</i>
February-2016	298.9	298.9	415.0	415.0	553.7	552.7	588.7
March-2016	309.0	309.0	413.2	413.2	606.9	607.0	604.6
April-2016	380.3	380.3	418.8	418.8	579.1	578.7	590.5
May-2016	380.3	380.3	417.1	417.1	579.1	578.8	590.4
June-2016	380.3	380.3	421.7	421.7	591.5	590.5	626.1
July-2016	381.3	381.3	420.6	420.6	591.6	590.6	626.1
August-2016	381.3	381.3	427.5	427.5	591.2	590.2	626.1
September-2016	381.3	381.3	428.7	428.7	591.2	590.2	626.1
October-2016	381.3	381.3	423.1	423.1	594.9	594.0	626.1
November-2016	373.1	373.1	414.5	414.5	595.5	594.6	626.1
December-2016	373.1	373.1	417.8	417.8	596.8	595.9	626.1
January-2017	373.2	373.2	435.3	435.3	596.8	595.9	626.1
February-2017	p 373.3	p 373.3	p 449.6	p 449.6	p 597.1	p 595.9	p 638.5

*p: provisional*

## PPI for Selected Subgroups in the Manufacturing Sector (Sept.2006=100)



- ◆ Manufacture of food products and beverages
- Manufacture of wood and articles of straw etc.
- ▲ Manufacture of coke, refined petroleum products etc.
- Manufacture of chemicals and chemical products
- ✕ Manufacture of other non-metallic min. products
- Manufacture of basic metals

*Ghana Statistical Service (GSS)*

**Table 9: Manufacturing: Yearly Change Rates for February 2016 - February 2017 (%)**

Year / Month	<b>Manufacturing</b>	<b>Manufacture of food products and beverages</b>	Production, processing, preservation of meat, fish, fruit, vegetables, oils and fats	Manufacture of dairy products	Manufacture of grain mill products, starch products, and prepared animal feeds	Manufacture of other food products	Manufacture of beverages	<b>Manufacture of textiles</b>	Spinning, weaving and finishing of textiles
<i>ISIC</i>	<b>D</b>	<b>D15</b>	<i>D151</i>	<i>D152</i>	<i>D153</i>	<i>D154</i>	<i>D155</i>	<b>D17</b>	<i>D171</i>
<i>weight</i>	<b>100</b>	<b>25.64</b>	4.60	4.31	4.66	4.80	7.27	<b>4.27</b>	4.28
February-2016	9.8	3.8	9.2	-0.6	8.5	27.3	-5.7	11.6	11.6
March-2016	10.1	2.0	2.2	-0.6	7.6	28.1	-7.7	14.8	14.8
April-2016	9.1	-0.2	-10.0	-0.6	5.9	26.0	-7.0	12.0	12.0
May-2016	8.8	-0.5	-10.3	-0.6	6.2	22.0	-7.0	14.8	14.8
June-2016	3.7	-1.9	-16.2	0.0	6.2	19.1	-7.8	9.6	9.6
July-2016	1.2	1.9	-0.3	0.0	0.1	19.0	-0.1	6.2	6.2
August-2016	2.4	-0.2	-7.6	0.0	-2.9	15.4	-0.1	6.3	6.3
September-2016	1.4	1.5	3.1	0.0	-2.9	15.0	-0.1	5.5	5.5
October-2016	3.0	1.1	0.7	0.0	-2.9	15.1	-0.1	6.2	6.2
November-2016	4.9	0.9	1.0	0.0	-2.9	12.8	-0.4	7.7	7.7
December-2016	5.4	1.9	4.1	0.0	-3.2	13.2	1.7	7.6	7.6
January-2017	2.4	2.7	5.3	0.0	-3.2	15.3	3.0	7.7	7.7
February-2017	p 3.4	p 2.5	p 11.0	p 0.0	p -5.5	p 11.9	p 2.1	p 7.9	p 7.9

*p: provisional*

**Table 9: Manufacturing Producer Price Index Yearly Change Rates for February 2016 - February 2017 (%)**

*contd.*

Year / Month	Tanning of leather; manufacture of luggage, etc	Manufacture of footwear	Manufacture of wood and of articles of straw etc.	Sawmilling and planing of wood	Manufacture of products of wood, cork, straw etc.	Manufacture of paper and paper products	Manufacture of paper and paper products	Publishing, printing and reproduction of rec. media	Publishing	Printing and service activities ...
<i>ISIC</i>	<b>D19</b>	<i>D192</i>	<b>D20</b>	<i>D201</i>	<i>D202</i>	<b>D21</b>	<i>D210</i>	<b>D22</b>	<i>D221</i>	<i>D222</i>
<i>weight</i>	<b>0.12</b>	<i>0.12</i>	<b>9.03</b>	<i>4.94</i>	<i>4.10</i>	<b>0.62</b>	<i>0.62</i>	<b>1.14</b>	<i>0.40</i>	<i>0.74</i>
February-2016	35.8	35.8	30.2	35.9	15.8	42.9	42.9	20.1	0.0	32.7
March-2016	35.2	35.2	29.9	35.9	15.1	47.0	47.0	20.1	0.0	32.7
April-2016	34.3	34.3	29.4	35.5	15.0	41.9	41.9	-5.7	0.0	-15.0
May-2016	36.0	36.0	29.5	35.5	15.3	41.9	41.9	-5.7	0.0	-15.0
June-2016	39.4	39.4	32.6	40.2	14.8	33.5	33.5	-0.5	0.0	-7.7
July-2016	39.4	39.4	38.3	47.4	16.4	34.4	34.4	6.2	0.0	9.7
August-2016	39.4	39.4	58.4	77.2	15.3	33.2	33.2	5.1	0.0	7.9
September-2016	39.0	39.0	58.1	77.2	14.6	4.8	4.8	6.7	0.0	10.6
October-2016	39.0	39.0	48.9	64.5	12.4	4.9	4.9	6.7	0.0	10.5
November-2016	39.9	39.9	48.1	64.3	12.2	6.6	6.6	6.7	0.0	10.5
December-2016	39.0	39.0	43.6	57.3	10.9	60.9	60.9	6.7	0.0	10.5
January-2017	39.0	39.0	15.8	21.0	2.3	1.9	1.9	5.9	0.0	9.3
February-2017	p 39.0	p 39.0	p 15.8	p 21.0	p 2.4	p -0.9	p -0.9	p 5.5	p 0.0	p 8.6

*p: provisional*

**Table 9: Manufacturing: Yearly Change Rates for February 2016 - February 2017 (%)**

*contd.*

Year / Month	Manufacture of coke, refined petroleum products etc.	Manufacture of refined petroleum products	Manufacture of chemicals and chemical products	Manufacture of basic chemicals	Manufacture of other chemical products	Manufacture of man-made fibres	Manufacture of rubber and plastic products	Manufacture of rubber products	Manufacture of plastics products
<i>ISIC</i>	<b>D23</b>	D232	<b>D24</b>	D241	D242	D243	<b>D25</b>	D251	D252
<i>weight</i>	<b>22.94</b>	22.94	<b>10.15</b>	0.54	9.45	0.16	<b>3.90</b>	0.76	3.14
February-2016	0.5	0.5	41.8	0.0	43.4	0.0	18.0	36.7	12.8
March-2016	2.9	2.9	45.0	0.0	46.3	17.5	13.0	35.4	7.2
April-2016	6.5	6.5	36.1	0.4	37.0	17.5	12.2	31.4	6.9
May-2016	6.1	6.1	36.3	0.2	37.2	17.5	4.0	-4.6	6.0
June-2016	-4.7	-4.7	30.4	0.2	31.1	17.5	-3.9	-9.0	-2.8
July-2016	-19.3	-19.3	29.2	0.6	29.9	17.5	0.3	-8.8	2.3
August-2016	-16.3	-16.3	28.7	1.4	29.3	17.5	-1.1	-14.0	1.9
September-2016	-14.8	-14.8	5.2	1.6	5.0	17.5	-0.1	-13.6	3.1
October-2016	-7.4	-7.4	11.5	0.9	11.6	17.5	-2.5	-20.4	3.1
November-2016	-0.2	-0.2	10.4	0.9	10.4	17.5	0.4	-12.3	4.6
December-2016	-0.1	-0.1	9.5	0.9	9.5	17.5	0.4	-11.2	4.6
January-2017	-6.9	-6.9	9.6	2.4	9.6	17.5	0.2	-14.3	4.9
February-2017	p 0.4	p 0.4	p 8.4	p 4.1	p 8.3	p 17.5	p -0.9	p -10.9	p 2.8

*p: provisional*

**Table 9: Manufacturing: Yearly Change Rates for February 2016 - February 2017 (%)**

*contd.*

Year / Month	Manufacture of other non-metallic min. products	Manufacture of non-metallic mineral products n.e.c.	Manufacture of basic metals	Manufacture of basic iron and steel	Manufacture of basic precious and non-ferrous metals	Manufacture of fabricated metal products, ...	Manufacture of structural metal products, tanks, reservoirs ...	Manufacture of other fabricated metal products ...	Manufacture of machinery ... n.e.c.	Manufacture of special-purpose machinery
<i>ISIC</i>	<b>D26</b>	<i>D269</i>	<b>D27</b>	<i>D271</i>	<i>D272</i>	<b>D28</b>	<i>D281</i>	<i>D289</i>	<b>D29</b>	<i>D292</i>
<i>weight</i>	<b>8.20</b>	8.20	<b>5.02</b>	2.02	2.65	<b>3.70</b>	1.55	2.15	<b>0.42</b>	0.42
February-2016	7.9	7.9	-3.2	-17.4	9.2	19.5	8.0	28.2	5.6	5.6
March-2016	7.8	7.8	-4.6	-17.7	6.8	20.0	9.0	28.5	0.0	0.0
April-2016	8.9	8.9	-1.4	-9.0	4.7	10.7	-3.6	22.5	18.2	18.2
May-2016	9.1	9.1	-1.6	-9.0	4.4	12.9	-2.7	25.7	18.3	18.3
June-2016	3.0	3.0	-4.9	-8.7	-1.9	8.1	-4.7	18.5	18.3	18.3
July-2016	1.8	1.8	-2.3	-5.5	0.2	14.2	8.2	18.6	18.3	18.3
August-2016	1.8	1.8	-5.7	-5.9	-5.5	14.5	8.2	19.1	18.3	18.3
September-2016	2.1	2.1	-1.6	-5.8	1.7	13.7	7.1	18.7	18.3	18.3
October-2016	2.2	2.2	-1.4	-5.7	2.0	1.0	-6.3	7.3	18.3	18.3
November-2016	2.2	2.2	-0.8	-5.7	3.2	1.1	-6.3	7.5	18.3	18.3
December-2016	1.5	1.5	5.3	5.2	5.5	7.1	6.7	7.5	18.3	18.3
January-2017	2.8	2.8	4.0	0.6	6.6	6.2	6.7	6.0	18.3	18.3
February-2017	p -2.2	p -2.2	p 5.9	p 5.1	p 6.5	p 6.7	p 7.7	p 6.0	p 18.3	p 18.3

*p: provisional*

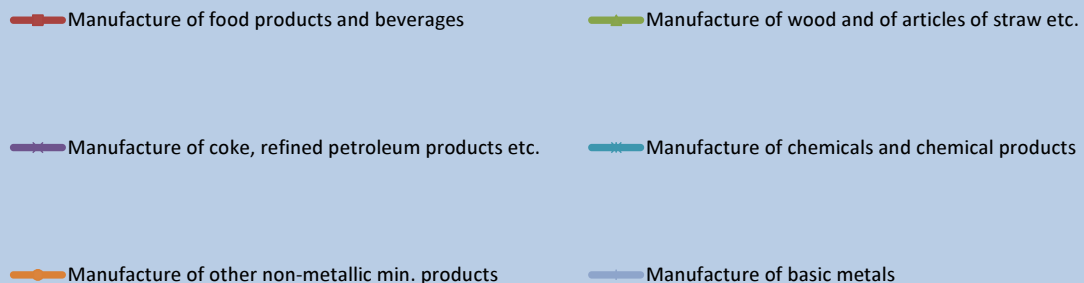
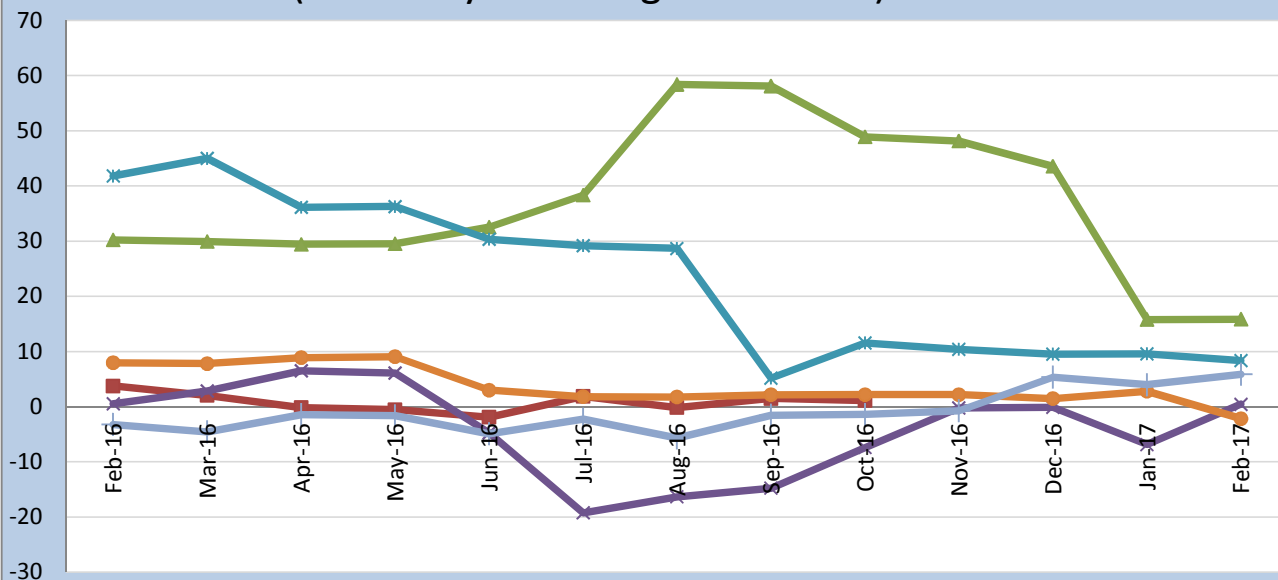
**Table 9: Manufacturing: Yearly Change Rates for February 2016 - February 2017 (%)**

*contd.*

Year / Month	Manufacture of electrical machinery and apparatus n.e.c.	Manufacture of insulated wire and cable	Manufacture of motor vehicles, trailers and semi-trailers	Manufacture of bodies for motor vehicles, trailers and semi-trailers	Manufacture of furniture; manufacturing n.e.c.	Manufacture of furniture	Manufacturing n.e.c.
<i>ISIC</i>	<b>D31</b>	<i>D313</i>	<b>D34</b>	<i>D342</i>	<b>D36</b>	<i>D361</i>	<i>D369</i>
<i>weight</i>	<b>0.41</b>	<i>0.41</i>	<b>0.05</b>	<i>0.05</i>	<b>2.44</b>	<i>2.33</i>	<i>0.11</i>
February-2016	8.6	8.6	12.4	12.4	16.6	16.4	21.3
March-2016	10.6	10.6	9.8	9.8	20.3	20.2	24.6
April-2016	36.1	36.1	5.4	5.4	14.7	14.6	21.6
May-2016	36.1	36.1	-0.8	-0.8	13.9	13.7	21.6
June-2016	34.9	34.9	-7.3	-7.3	10.6	10.1	29.0
July-2016	27.6	27.6	18.3	18.3	11.2	10.8	29.0
August-2016	27.6	27.6	14.6	14.6	10.5	10.0	29.0
September-2016	27.6	27.6	17.3	17.3	7.5	7.0	27.5
October-2016	27.6	27.6	8.1	8.1	7.4	7.5	6.3
November-2016	24.8	24.8	5.3	5.3	7.2	7.3	6.3
December-2016	24.8	24.8	4.8	4.8	7.8	7.8	6.3
January-2017	24.9	24.9	9.2	9.2	7.7	7.7	6.3
February-2017	p 24.9	p 24.9	p 8.4	p 8.4	p 7.8	p 7.8	p 8.5

*p: provisional*

## PPI Inflation for selected subgroups in the Manufacturing Sector (Year-on-year change rates in %)



*Ghana Statistical Service (GSS)*



**Table 10: Manufacturing: Monthly Change Rates for J February 2016 - February 2017 (%)**

Year / Month	<b>Manufacturing</b>	<b>Manufacture of food products and beverages</b>	Production, processing, preservation of meat, fish, fruit, vegetables, oils and fats	Manufacture of dairy products	Manufacture of grain mill products, starch products, and prepared animal feeds	Manufacture of other food products	Manufacture of beverages	<b>Manufacture of textiles</b>	Spinning, weaving and finishing of textiles
<i>ISIC</i>	<i>D</i>	<i>D15</i>	<i>D151</i>	<i>D152</i>	<i>D153</i>	<i>D154</i>	<i>D155</i>	<i>D17</i>	<i>D171</i>
<i>weight</i>	<b>100</b>	<b>25.64</b>	<b>4.60</b>	<b>4.31</b>	<b>4.66</b>	<b>4.80</b>	<b>7.27</b>	<b>4.27</b>	<b>4.28</b>
February-2016	0.2	0.3	0.5	0.0	0.0	0.1	0.8	0.0	0.0
March-2016	0.8	0.5	2.7	0.0	0.0	1.1	0.0	2.9	2.9
April-2016	0.2	-1.5	-7.7	0.0	-3.1	0.5	0.8	0.1	0.1
May-2016	0.4	1.1	0.4	0.0	0.3	9.5	0.0	2.5	2.5
June-2016	0.4	0.1	0.0	0.0	0.0	0.8	0.0	0.1	0.1
July-2016	0.0	0.2	1.8	0.0	0.0	-0.6	0.0	0.0	0.0
August-2016	-4.8	-0.4	-2.0	0.0	0.0	-0.4	0.0	0.1	0.1
September-2016	1.0	0.7	4.3	0.0	0.0	0.9	0.0	0.0	0.0
October-2016	0.2	-0.1	-0.5	0.0	0.0	0.1	0.0	-0.1	-0.1
November-2016	2.0	0.2	0.6	0.0	0.0	0.0	0.2	1.9	1.9
December-2016	0.1	0.5	3.7	0.0	-0.3	0.3	0.0	0.0	0.0
January-2017	2.0	0.9	2.1	0.0	0.0	2.5	1.3	0.1	0.1
February-2017	p 1.3	p 0.1	p 5.9	p 0.0	p -2.4	p -2.9	p -0.0	p 0.2	p 0.2

*p: provisional*

**Table 10: Manufacturing: Monthly Change Rates for J February 2016 - February 2017 (%)**

*contd.*

Year / Month	Tanning of leather; manu facture of luggage, etc	Manufacture of footwear	Manufacture of wood an of articles of straw etc.	Sawmilling and planing of wood	Manufacture of products of wood, cork, straw etc.	Manufacture of paper and paper products	Manufacture of paper and paper products	Publishing, printing and reproduction of rec. media	Publishing	Printing and service activities ...
<i>ISIC</i>	<b>D19</b>	<i>D192</i>	<b>D20</b>	<i>D201</i>	<i>D202</i>	<b>D21</b>	<i>D210</i>	<b>D22</b>	<i>D221</i>	<i>D222</i>
<i>weight</i>	<b>0.12</b>	<i>0.12</i>	<b>9.03</b>	<i>4.94</i>	<i>4.10</i>	<b>0.62</b>	<i>0.62</i>	<b>1.14</b>	<i>0.40</i>	<i>0.74</i>
February-2016	0.0	0.0	0.1	0.0	0.3	3.1	3.1	0.0	0.0	0.0
March-2016	15.8	15.8	0.2	0.0	0.6	4.4	4.4	0.0	0.0	0.0
April-2016	-0.6	-0.6	0.0	0.0	-0.1	-0.1	-0.1	0.0	0.0	-0.1
May-2016	1.2	1.2	0.1	0.0	0.2	0.2	0.2	0.0	0.0	0.0
June-2016	19.3	19.3	2.6	3.4	0.4	0.1	0.1	5.5	0.0	8.6
July-2016	0.0	0.0	3.8	4.9	0.8	0.2	0.2	0.5	0.0	0.7
August-2016	0.0	0.0	8.4	11.5	0.0	0.4	0.4	0.0	0.0	0.0
September-2016	0.0	0.0	0.0	0.0	0.1	-7.8	-7.8	0.0	0.0	0.0
October-2016	0.0	0.0	-0.1	0.0	-0.4	0.0	0.0	0.0	0.0	0.0
November-2016	0.6	0.6	-0.5	-0.1	-0.1	1.6	1.6	0.0	0.0	0.0
December-2016	-0.6	-0.6	0.5	0.1	0.0	0.0	0.0	0.0	0.0	0.0
January-2017	0.0	0.0	0.1	0.0	0.2	0.3	0.3	0.0	0.0	0.0
February-2017	p 0.0	p 0.0	p 0.1	p 0.0	p 0.5	p 0.3	p 0.3	p -0.4	p 0.0	p -0.7

*p: provisional*

**Table 10: Manufacturing: Monthly Change Rates for J February 2016 - February 2017 (%)**

*contd.*

Year / Month	Manufacture of coke, refined petroleum products etc.	Manufacture of refined petroleum products	Manufacture of chemicals and chemical products	Manufacture of basic chemicals	Manufacture of other chemical products	Manufacture of man-made fibres	Manufacture of rubber and plastics products	Manufacture of rubber products	Manufacture of plastics products
<i>ISIC</i>	<b>D23</b>	<i>D232</i>	<b>D24</b>	<i>D241</i>	<i>D242</i>	<i>D243</i>	<b>D25</b>	<i>D251</i>	<i>D252</i>
<i>weight</i>	<b>22.94</b>	<i>22.94</i>	<b>10.15</b>	<i>0.54</i>	<i>9.45</i>	<i>0.16</i>	<b>3.90</b>	<i>0.76</i>	<i>3.14</i>
February-2016	-2.3	-2.3	1.5	0.0	1.5	0.0	1.9	0.0	2.2
March-2016	0.0	0.0	2.2	0.0	2.0	17.5	0.0	0.3	0.0
April-2016	4.0	4.0	-0.7	0.4	-0.8	0.0	-0.3	-2.0	0.0
May-2016	0.1	0.1	0.0	-0.2	0.0	0.0	-4.8	-19.1	0.1
June-2016	-0.5	-0.5	0.1	0.0	0.1	0.0	1.1	3.0	0.7
July-2016	-1.3	-1.3	0.0	0.4	0.0	0.0	0.1	0.1	0.1
August-2016	-20.2	-20.2	0.0	0.8	0.0	0.0	-0.8	-4.3	0.0
September-2016	3.1	3.1	0.1	0.1	0.1	0.0	0.0	0.2	0.0
October-2016	-1.5	-1.5	6.0	-0.7	6.3	0.0	0.2	1.0	0.0
November-2016	7.7	7.7	0.0	0.0	0.0	0.0	3.0	10.4	1.5
December-2016	-0.1	-0.1	0.0	0.0	0.0	0.0	-0.4	-2.2	0.0
January-2017	7.2	7.2	0.1	1.5	0.0	0.0	0.2	0.0	0.3
February-2017	p 5.3	p 5.3	p 0.4	p 1.7	p 0.3	p 0.0	p 0.8	p 3.9	p 0.1

*p: provisional*

**Table 10: Manufacturing: Monthly Change Rates for J February 2016 - February 2017 (%)**

*contd.*

Year / Month	Manufacture of other non-metallic min. products	Manufacture of non-metallic mineral products n.e.c.	Manufacture of basic metals	Manufacture of basic iron and steel	Manufacture of basic precious and non-ferrous metals	Manufacture of fabricated metal products, ...	Manufacture of structural metal products, tanks, reservoirs ...	Manufacture of other fabricated metal products ...	Manufacture of machinery ... n.e.c.	Manufacture of special-purpose machinery
<i>ISIC</i>	<b>D26</b>	<i>D269</i>	<b>D27</b>	<i>D271</i>	<i>D272</i>	<b>D28</b>	<i>D281</i>	<i>D289</i>	<b>D29</b>	<i>D292</i>
<i>weight</i>	<b>8.20</b>	<i>8.20</i>	<b>5.02</b>	<i>2.02</i>	<i>2.65</i>	<b>3.70</b>	<i>1.55</i>	<i>2.15</i>	<b>0.42</b>	<i>0.42</i>
February-2016	3.4	3.4	0.7	0.0	1.3	0.0	0.0	0.0	0.0	0.0
March-2016	0.1	0.1	0.1	0.0	0.2	0.3	0.8	0.0	0.0	0.0
April-2016	-1.8	-1.8	0.0	0.0	0.1	0.0	0.0	0.1	18.2	18.2
May-2016	0.1	0.1	0.3	0.1	0.4	4.3	4.4	4.1	0.0	0.0
June-2016	0.6	0.6	0.1	0.0	0.1	1.3	1.8	0.9	0.0	0.0
July-2016	0.4	0.4	0.3	0.1	0.5	0.0	0.0	0.0	0.0	0.0
August-2016	0.0	0.0	-1.5	0.0	-2.7	0.4	0.0	0.7	0.0	0.0
September-2016	-0.3	-0.3	2.3	0.0	4.0	-0.2	-0.4	0.0	0.0	0.0
October-2016	0.1	0.1	0.1	0.0	0.1	0.0	0.0	0.0	0.0	0.0
November-2016	0.0	0.0	0.0	0.0	0.0	0.1	0.0	0.2	0.0	0.0
December-2016	0.0	0.0	0.7	0.2	1.1	0.0	0.0	0.0	0.0	0.0
January-2017	0.2	0.2	0.8	0.2	1.2	0.0	0.0	0.0	0.0	0.0
February-2017	p -1.6	p -1.6	p 2.6	p 4.5	p 1.2	p 0.5	p 0.9	p 0.0	p 0.0	p 0.0

*p: provisional*

**Table 10: Manufacturing: Monthly Change Rates for J February 2016 - February 2017 (%)**

*contd.*

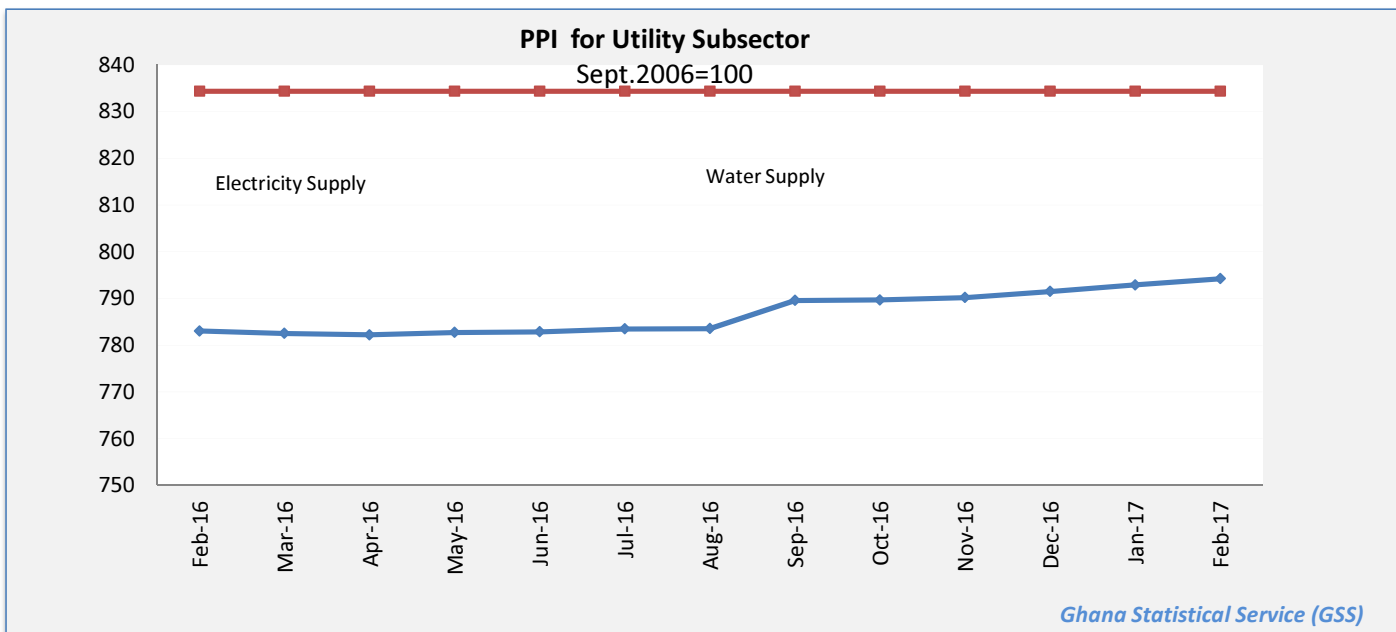
Year / Month	Manufacture of electrical machinery and apparatus n.e.c.	Manufacture of insulated wire and cable	Manufacture of motor vehicles, trailers and semi-trailers	Manufacture of bodies for motor vehicles, trailers and semi-trailers	Manufacture of furniture; manufacturing n.e.c.	Manufacture of furniture	Manufacturing n.e.c.
<i>ISIC</i>	<b>D31</b>	<i>D313</i>	<b>D34</b>	<i>D342</i>	<b>D36</b>	<i>D361</i>	<i>D369</i>
<i>weight</i>	<b>0.41</b>	<i>0.41</i>	<b>0.05</b>	<i>0.05</i>	<b>2.44</b>	<i>2.33</i>	<i>0.11</i>
February-2016	0.0	0.0	4.1	4.1	-0.1	-0.1	0.0
March-2016	3.4	3.4	-0.4	-0.4	9.6	9.8	2.7
April-2016	23.1	23.1	1.4	1.4	-4.6	-4.7	-2.3
May-2016	0.0	0.0	-0.4	-0.4	0.0	0.0	0.0
June-2016	0.0	0.0	1.1	1.1	2.1	2.0	6.0
July-2016	0.3	0.3	-0.3	-0.3	0.0	0.0	0.0
August-2016	0.0	0.0	1.6	1.6	-0.1	-0.1	0.0
September-2016	0.0	0.0	0.3	0.3	0.0	0.0	0.0
October-2016	0.0	0.0	-1.3	-1.3	0.6	0.6	0.0
November-2016	-2.2	-2.2	-2.0	-2.0	0.1	0.1	0.0
December-2016	0.0	0.0	0.8	0.8	0.2	0.2	0.0
January-2017	0.0	0.0	4.2	4.2	0.0	0.0	0.0
February-2017	p 0.0	p 0.0	p 3.3	p 3.3	p 0.1	p 0.0	p 2.0

*p: provisional*

**Table 11: Utilities: Producer Price Index (Sept 2006=100) for February 2016 - February 2017**

Year / Month	Electricity and water supply (Utilities)	Electricity supply	Production, transmission and distribution of electricity	Water supply	Collection, purification and distribution of water
ISIC	E	E40	E401	E41	E410
weight	100.00	93.25	93.25	6.75	6.75
February-2016	786.3	783.0	783.0	834.4	834.4
March-2016	785.9	782.6	782.6	834.4	834.4
April-2016	785.5	782.2	782.2	834.4	834.4
May-2016	786.0	782.7	782.7	834.4	834.4
June-2016	786.2	782.9	782.9	834.4	834.4
July-2016	786.7	783.5	783.5	834.4	834.4
August-2016	786.8	783.6	783.6	834.4	834.4
September-2016	792.5	789.6	789.6	834.4	834.4
October-2016	792.6	789.7	789.7	834.4	834.4
November-2016	793.0	790.2	790.2	834.4	834.4
December-2016	794.2	791.5	791.5	834.4	834.4
January-2017	795.6	792.9	792.9	834.4	834.4
February-2017	p 796.8	p 794.3	p 794.3	p 834.4	p 834.4

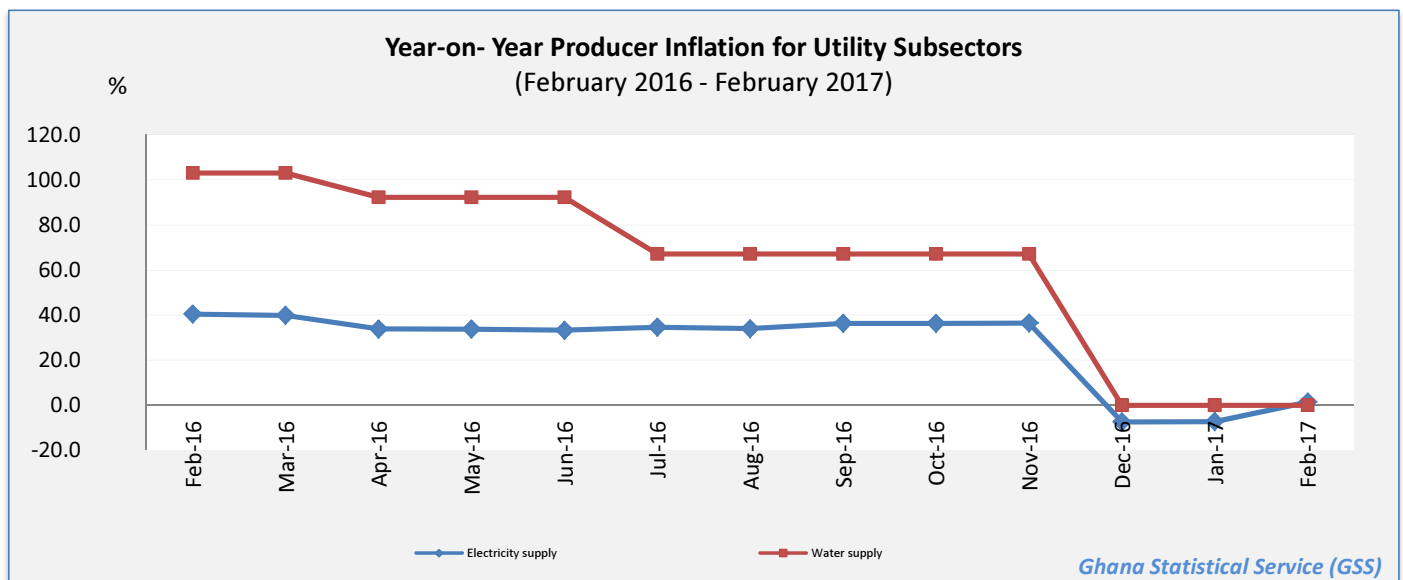
p: provisional



**Table 12: Utilities: Yearly Change Rates for February 2016 - February 2017 (%)**

Year / Month	Electricity and water supply (Utilities)	Electricity supply	Production, transmission and distribution of electricity	Water supply	Collection, purification and distribution of water
<i>ISIC</i>	<i>E</i>	<i>E40</i>	<i>E401</i>	<i>E41</i>	<i>E410</i>
<i>weight</i>	<b>100.00</b>	<b>93.25</b>	93.25	<b>6.75</b>	6.75
February-2016	43.9	40.5	40.5	103.0	103.0
March-2016	43.4	39.9	39.9	103.0	103.0
April-2016	37.1	33.9	33.9	92.3	92.3
May-2016	37.0	33.8	33.8	92.3	92.3
June-2016	36.5	33.3	33.3	92.3	92.3
July-2016	36.6	34.6	34.6	67.2	67.2
August-2016	36.0	34.0	34.0	67.2	67.2
September-2016	38.2	36.4	36.4	67.2	67.2
October-2016	38.2	36.4	36.4	67.2	67.2
November-2016	38.3	36.4	36.4	67.2	67.2
December-2016	-7.0	-7.4	-7.4	0.0	0.0
January-2017	-6.8	-7.3	-7.3	0.0	0.0
February-2017	p 1.3	p 1.4	p 1.4	p 0.0	p 0.0

*p: provisional*



**Table 13: Utilities: Monthly Change Rates for February 2016 - February 2017 (%)**

Year / Month	Electricity and water supply (Utilities)	Electricity supply	Production, transmission and distribution of electricity	Water supply	Collection, purification and distribution of water
<i>ISIC</i>	<i>E</i>	<i>E40</i>	<i>E401</i>	<i>E41</i>	<i>E410</i>
<i>weight</i>	<b>100.00</b>	<b>93.25</b>	<b>93.25</b>	<b>6.75</b>	<b>6.75</b>
February-2016	-7.9	-8.4	-8.4	0.0	0.0
March-2016	-0.1	-0.1	-0.1	0.0	0.0
April-2016	0.0	0.0	0.0	0.0	0.0
May-2016	0.1	0.1	0.1	0.0	0.0
June-2016	0.0	0.0	0.0	0.0	0.0
July-2016	0.1	0.1	0.1	0.0	0.0
August-2016	0.0	0.0	0.0	0.0	0.0
September-2016	0.7	0.8	0.8	0.0	0.0
October-2016	0.0	0.0	0.0	0.0	0.0
November-2016	0.1	0.1	0.1	0.0	0.0
December-2016	0.2	0.2	0.2	0.0	0.0
January-2017	p 0.2	p 0.2	p 0.2	p 0.0	p 0.0
February-2017	p 0.2	p 0.2	p 0.2	p 0.0	p 0.0

*p: provisional*

